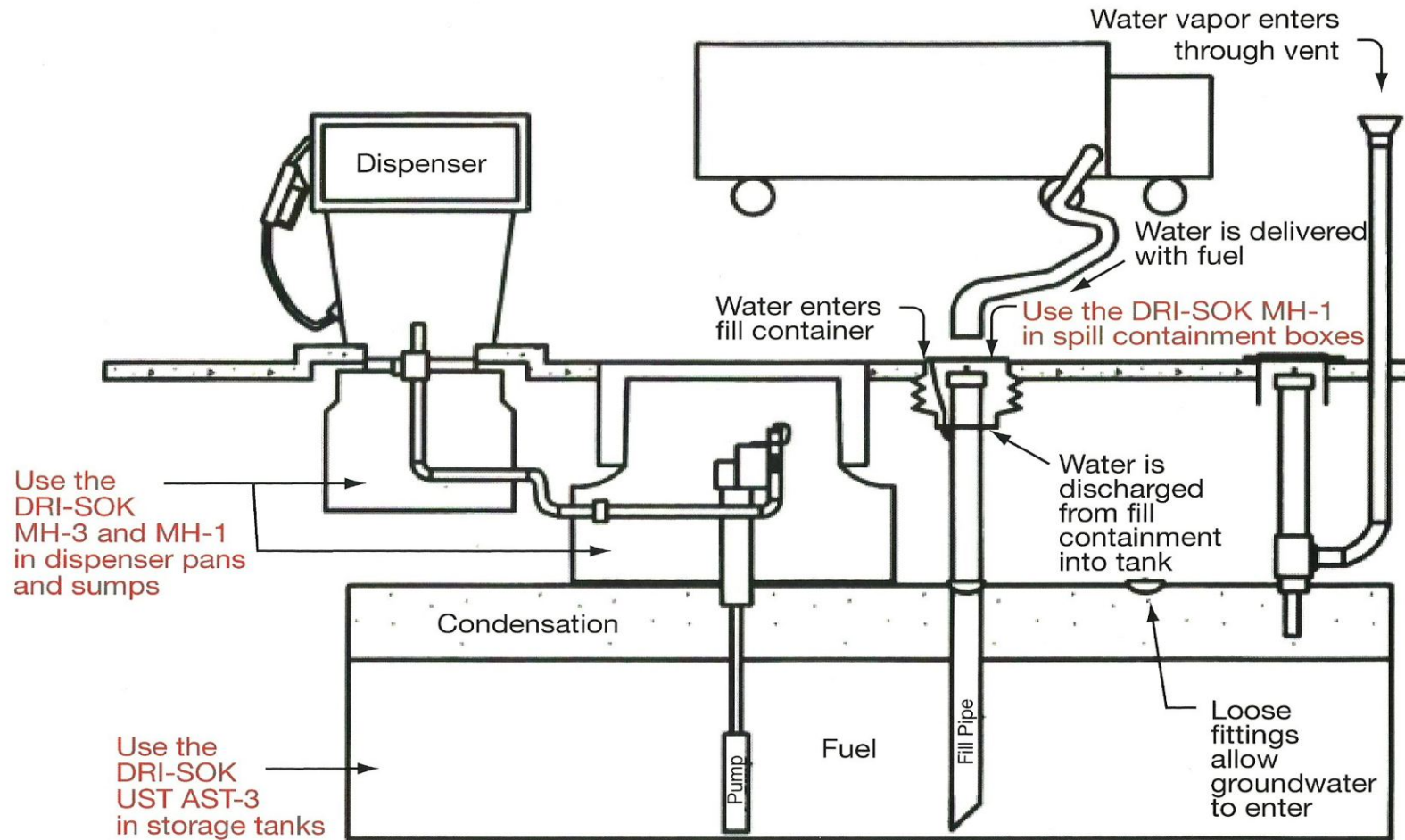
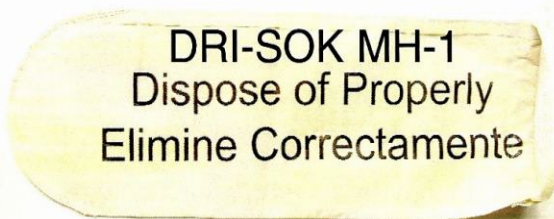
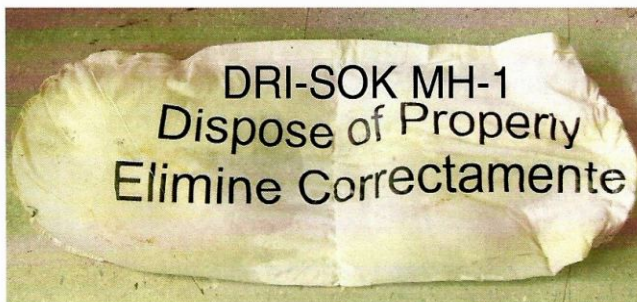


POSSIBLE WATER ENTRY POINTS INTO A STORAGE SYSTEM





DRI-SOK MH1
Ready for activation



DRI-SOK MH1 fully activated
after contact with water.
Absorbed over 1 gallon of water.



DRI-SOK MH1 fully activated in a
spill containment box

PART NUMBERS & APPLICATIONS

DRI-SOK MH1	<ul style="list-style-type: none"> - 1 Gallon absorption capacity - Weighs 9 lbs. when fully activated - Use in spill containment boxes, sumps, dispenser pans and other "open" areas.
DRI-SOK MH3	<ul style="list-style-type: none"> - 3 Gallon absorption capacity - Weighs 27 lbs. when fully activated - Use in sumps, dispenser pans and AST dikes.
DRI-SOK UST AST-3	<ul style="list-style-type: none"> - 3 Gallon absorption capacity - Weighs 28 lbs. when fully activated - Use in UST or AST.