

**Legendary Toughness
for Your Heavy Duty Truck**



Ordering Your Merritt Cab Rack



STEP 1:

Choose the **Base Unit** that fits the Height & Width of your Cab.
Select from one of our

6 options.

**See page 7*



STEP 2:

Window or No Window?

That is the question.



STEP 3:

Options &

Configurations:

Chain Hangers, Shelving,
Grab Handles, Storage
Trays, Enclosures, Light
Brackets, LED Lighting...

And more!



STEP 4:

Contact Customer Service

for your part number!
800.333.3331

!





Dyna-Clamp Kits*

DESCRIPTION	OPTION #
Dyna-Clamp Kit (17" U-bolts) For Frame Rails 11" Deep or Less	324
Dyna-Clamp Kit (21" U-bolts) For Frame Rails Over 11"	325

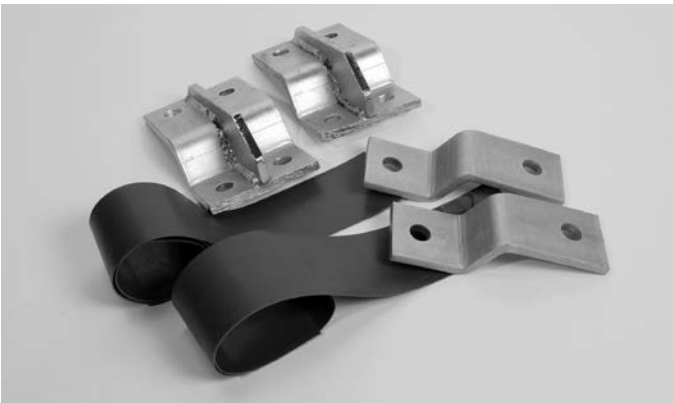
Most popular kits. Designed for most installation needs.



Deluxe Kits*

DESCRIPTION	OPTION #
Deluxe Mounting Kit (17" LI-bolts) For Frame Rails 11" Deep or Less	326
Deluxe Mounting Kit (21" LI-bolts) For Frame Rails Over 11"	327

Designed to give an extra option for problem installations. Two Brackets and Two U-Bolts.

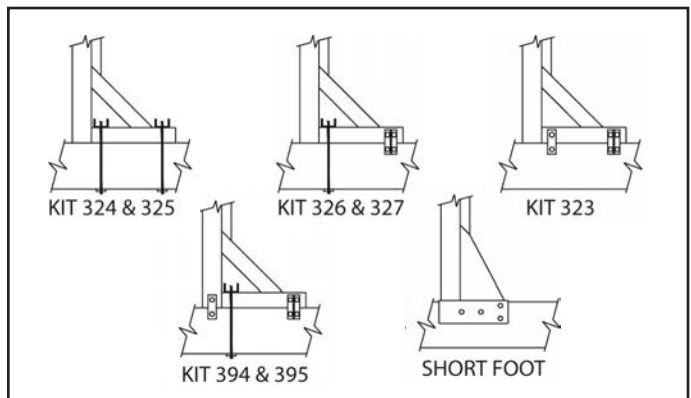


Problem Solver*

DESCRIPTION	OPTION #
Problem Solver Kit (nuts and bolts not included)	323

Designed for difficult installations in and around air tanks, hanger brackets, crossmembers, fuel tanks, etc.

*All parts zinc coated for corrosion resistance.



3-Point Mounting Kit*

DESCRIPTION	OPTION #
3-Point Mounting Kit (17" LI-bolts) For Frame Rails 11" Deep or Less	394
3-Point Mounting Kit (21" LI-bolts) For Frame Rails Over 11"	395

Four Brackets and Two U Bolts .



Merritt Cab Racks are NOT to be used in conjunction with log trailers or pole trailers.



Models and/or Specifications Subject to Change Without Notice.



SELECT CAB RACK OPTIONS



OPTION #328: 2 Locking Chain Racks, Full Tray



OPTION #363: 2 Locking Chain Racks, Split Tray (Available in 24" or 18")



OPTION #147: Locking Chain Rack Cover



OPTION #373: Center Enclosure - 44x10x26
OPTION #375: Center Enclosure - 44x18x27



OPTION #381: Side Enclosure - 11" Deep
Not Available for BASE #317.



OPTION #3402: Jail Bar 3 Door Enclosure
14" outer dim. x 11" inner dim.

OPTION #3406: Bright Door Enclosure



OPTION #390: 3 Door Deep Drop Enclosure
14" outer dim. x 11" inner dim.
Works with **BASE #319, 320, 321, 322**

OPTION #3905: Bright Door & Body



Models and/or Specifications Subject to Change Without Notice.



OPTION #3400: Full 2 & 3 Door Enclosures,
Bright Doors
14" outer dim. x 11" inner dim.

OPTION #3401: Full 2 & 3 Door Enclosures,
Stainless steel

OPTION #3405: Bright Door & Body



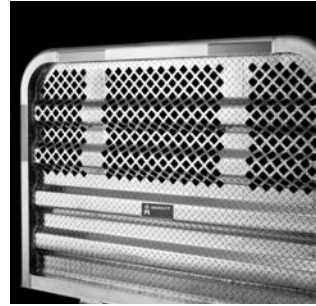
OPTION #340: 2 & 3 Door Enclosures w/
Diamond Plate Doors
14" outer dim. x 11" inner dim.
2 Door: Works with **BASE #317**
3 Door: Works with **BASE #318, 319, 320, 321, 322**



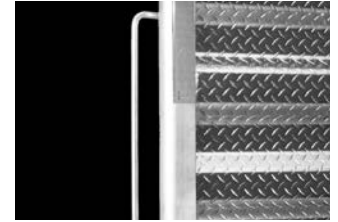
OPTION #367: Jail Bar Window
27" W x 23" H



OPTION #369: E-Z View Window
26-5/8" W x 22-3/16" H



OPTION #386: E-Z View
Full Window



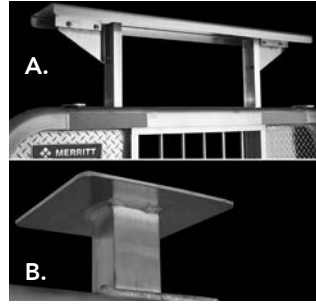
OPTION #142: Grab Handle - 25"



OPTION #3430: Wide Load Sign,
Air Operated

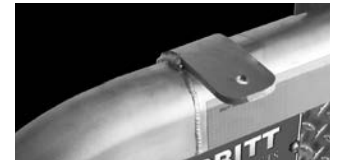


***OPTION #141-1:** Top Mount
Light Bar, 14" Pad



***A. OPTION #141-2:** Top Mount
Light Bar, 51.5" Pad

***B. OPTION #393:** Beacon Bracket,
Fixed



OPTION #144: Bracket, Load Light



OPTION #4212: Stop & Turn
Light Bracket

OPTION #4232: 2 Round Lights for
Diamond Back Cab Rack

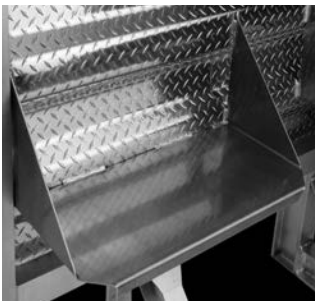
OPTION #4222: 2 Oval Lights

OPTION #4213: 3 Round Lights

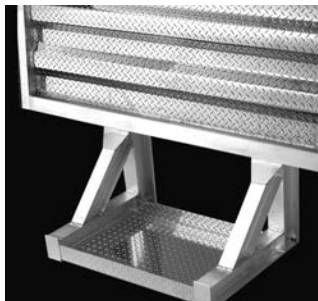
OPTION #4223: 3 Oval Lights*

OPTION #4211: 1 Round Light*

*Will not fit BASE #317 or #318.



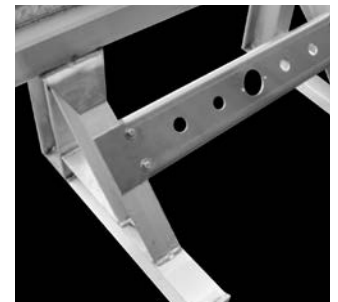
OPTION #336: Tray Panel
Mount, 11-1/2" H x 26" W



OPTION #337: Base Tray
30" W x 20-3/4" D



PART #230: Tuck-Away Box
20" H x 24" D x 24" W
Sold Separately



OPTION #4870: Between the
Foot Bracket With Holes,
33" W x 7" H

OPTION #4871: Between the
Foot Bracket Without Holes,
33" W x 7" H

Additional Options for Cab Racks

DESCRIPTION	OPTION #
Chain Rack w/o Locking Cover	128
24" Wide Tray, 11.25"H x 8.5"D	333
18" Wide Tray, 11.25"H x 8.5"D	333-18
Full Width Tray, 11.25"H x 8.5"D	329
Lid Assembly for 24" Tray	334
Lid Assembly, Full Tray	331
Top Mount Tarp Tray	335
Hose Tender	1420

DESCRIPTION	OPTION #
Hose Hanger Assembly	392
Enclosure Shelf	341
Beacon Bracket, Sliding	413
Shelf Center Enclosure, 9" D	377
Shelf Center Enclosure, 18" D	378
Chain Rack Enclosure, Single	380
Retainer, Chain Center Enclosure	379

* = these options **DO NOT** work with Cab Racks: 381, 375, or 373

Call Customer Service for Additional Options.



Dyna-Light & Diamondback CR



Dyna-Light Rack
Deluxe Option 328 shown



Diamond Back
Cornered Rack



Dyna-Light Rack
Bright Panel

- Dyna-Tube extrusion, aerodynamic radius corner shape or 45-degree design, for low weight and enhanced aerodynamics and greater fuel efficiency.
- Offset design available to accommodate the new style exhaust systems.
- 4 inch tall, foot assembly, provides increased trailer clearance for easier mounting and durability.
- New T-Beam extrusion decreases T-beam profile by 1 inch, allowing for greater clearance.
- Great for storage; One door, two door and full three door enclosures are available.
- The 4in. foot assembly provides increased trailer clearance, easier mounting and durability.
- Mounts with Merritt's seven standard cab rack mounting options.
- Custom configurations available by contacting Sales.

Styles & Sizes

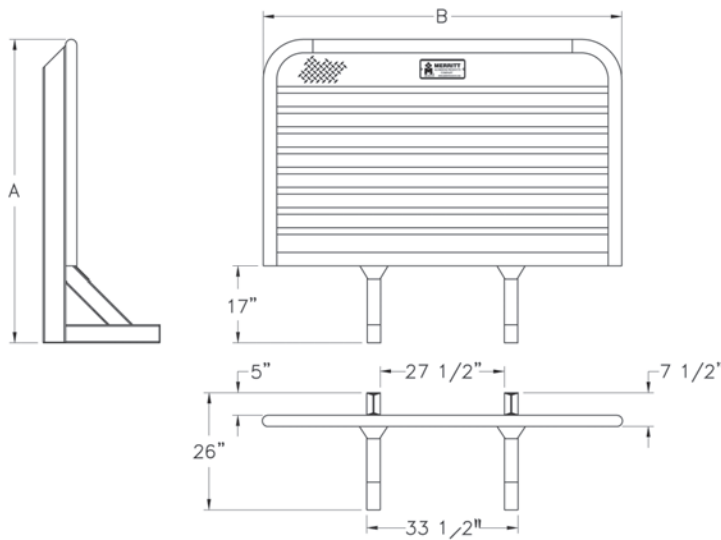
DIAMOND PLATE	PART NO.	A	B	WT.
Dyna-Light - Radius Corner	317	68"	70"	122
Dyna-Light - Radius Corner	318	68"	76"	125
Dyna-Light - Radius Corner	319	68"	86"	130
Dyna-Light - Radius Corner	320	68"	80"	128
Dyna-Light - Mack CH Series	321	73"	78"	133
Dyna-Light - Radius Corner	322	75"	86"	140
Dyna-Light - Tall Cab App	3750	80"	76"	176
Diamondback - 45° Corner	370	68"	70"	122
Diamondback - 45° Corner	371	68"	86"	130
Dyna-Light - Offset	3172	68"	61"	115
Dyna-Light - Offset	3182	68"	64"	117
Dyna-Light - Offset	3192	68"	69"	120
Dyna-Light - Offset	3202	68"	66"	118
Dyna-Light - Offset	3212	73"	68"	126
Dyna-Light - Offset	3222	75"	69"	133

BRIGHT PANEL	PART NO.	A	B	WT.
Dyna-Light - Radius Corner	3173	68"	70"	122
Dyna-Light - Radius Corner	3183	68"	76"	125
Dyna-Light - Radius Corner	3193	68"	86"	130
Dyna-Light - Radius Corner	3203	68"	80"	128
Dyna-Light - Mack CH Series	3213	73"	78"	133
Dyna-Light - Radius Corner	3223	75"	86"	140

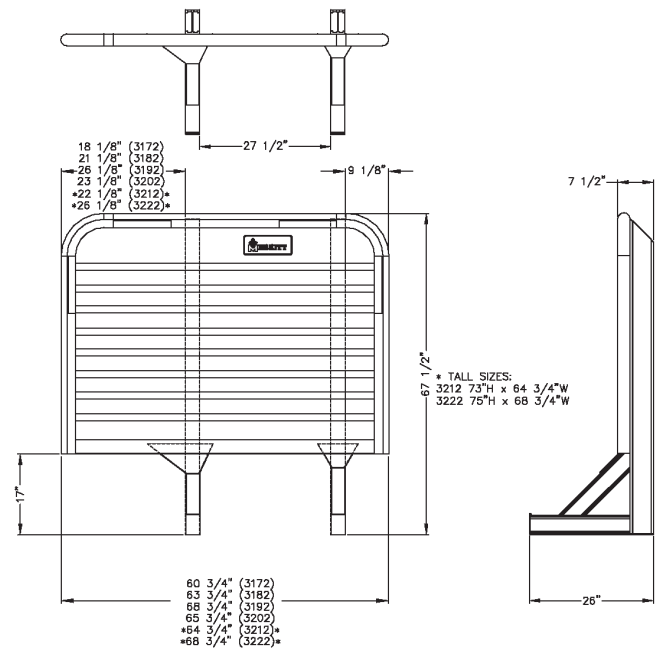
- All Cab Racks Mount with Merritt's standard cab rack mounting options.
- Cab Racks must be Installed to Merritt Specifications with a Merritt Mounting Kit (p.2).

Models and/or Specifications Subject to Change Without Notice.
F.O.B. - Fort Lupton CO, Sacrament CA, Dallas TX, Columbus OH, Calgary AB (Canada)

Cab Rack Measurements



Standard Panel



Offset Panel

This cab rack is NOT A SAFETY DEVICE and will NOT PREVENT SERIOUS INJURY or DEATH from forward shifting cargo as a result of an accident or improper securement.

To prevent SERIOUS INJURY or DEATH:

- ALWAYS secure your cargo in compliance with FMCSA/DOT regulations. See 49 CFR 393 for specific requirements. Be aware of any applicable state motor carrier regulations.
- NEVER consider this cab rack to be part of your cargo securement system. It is not a substitute for any cargo securement device and does not change any of the cargo securement requirements.
- NEVER haul a log trailer or a pole trailer with this cab rack installed. It is a misuse of the cab rack and is strictly prohibited by Merritt Aluminum Products Company.
- NEVER allow cargo to contact cab rack or use cab rack as a tie down point.
- INSPECT cab rack weekly for cracks or damage. If damaged, replace cab rack.
- CHECK torque of all bolts every 90 days. Bolts on Moon Brackets 150ft.-lbs. dry.
- Use cab rack for storing chains and equipment. For more information, visit www.merrittproducts.com
- ONLY use a Merritt Mounting Kit. If a Merritt Mounting Kit is not used to install a Merritt cab rack, then your cab rack warranty will be void.

WARNING:

NEVER reuse a mounting kit. ALWAYS read and follow the Merritt Mounting Kit Assembly Instructions to ensure proper installation. If you do not have the proper equipment or skill to install the cab rack, take your vehicle to an authorized dealer.





Short Foot CR



*Selecting a Short Foot design allows **ULTIMATE** clearance and saves spaces on the truck frame!*

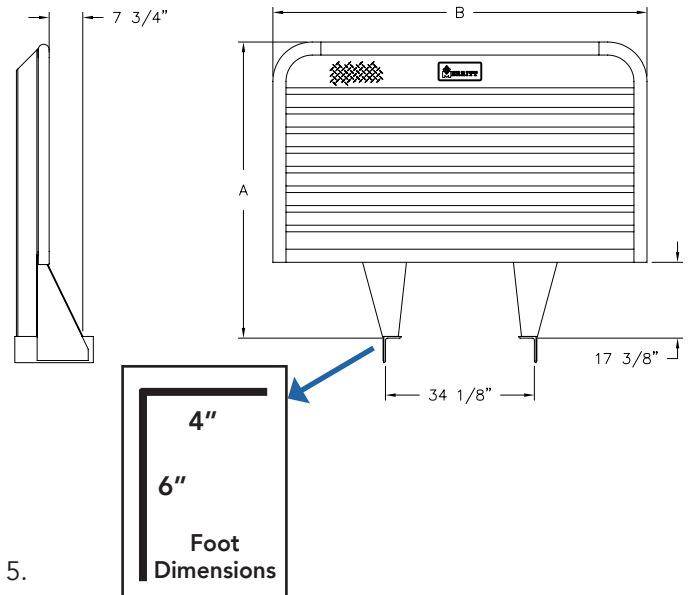
- Fits any Merritt Cab Rack, Dyna-Light or Diamond Back. (15 Models)
- Drill pattern mounting instruction attached to the foot for ease of installation.
- Fits most standard truck frame widths.
- Special tray options are available to maximize trailer swing clearance.

OPTIONS – SHORT FOOT CAB RACK



STEP 1: Select your Short Foot Base Unit from the chart below:

PART#	DESCRIPTION	HxW	WT.
317301	Dyna-Light - Radius Corner	68" x 70"	122
318301	Dyna-Light - Radius Corner	68" x 76"	125
319301	Dyna-Light - Radius Corner	68" x 86"	130
320301	Dyna-Light - Radius Corner	68" x 80"	128
321301	Dyna-Light - Radius Corner	73" x 78"	133
322301	Dyna-Light - Radius Corner	75" x 86"	140
3750301	Dyna-Light - Radius Corner	80" x 76"	176
370301	Diamond Back - 45° Corner	68" x 70"	122
371301	Diamond Back - 45° Corner	68" x 86"	130



STEP 2: Select Options

Choose your accessories from Cab Rack Options on page 4 & 5.



OPTION #628: 5" Deep Full Tray with Two Locking Chain Racks



OPTION #605: Low Mount Tray

- Use grade 8 bolts to mount (not included). Refer to the Merritt Mounting Instructions for correct installation. (Not Included)
- Requires drilling frame rail



This cab rack is NOT A SAFETY DEVICE and will NOT PREVENT SERIOUS INJURY or DEATH from forward shifting cargo as a result of an accident or improper securement.

To prevent **SERIOUS INJURY** or **DEATH**:

- **ALWAYS** secure your cargo in compliance with FMCSA/DOT regulations. See 49 CFR 393 for specific requirements. Be aware of any applicable state motor carrier regulations.
- **NEVER** consider this cab rack to be part of your cargo securement system. It is not a substitute for any cargo securement device and does not change any of the cargo securement requirements.
- **NEVER** haul a log trailer or a pole trailer with this cab rack installed. It is a misuse of the cab rack and is strictly prohibited by Merritt Aluminum Products Company.
- **NEVER** allow cargo to contact cab rack or use cab rack as a tie down point.
- **INSPECT** cab rack weekly for cracks or damage. If damaged, replace cab rack.
- **CHECK** torque of all bolts every 90 days. Bolts on Moon Brackets 150ft.-lbs. dry.
- Use cab rack for storing chains and equipment. For more information, visit www.merrittproducts.com
- **ONLY** use a Merritt Mounting Kit. If a Merritt Mounting Kit is not used to install a Merritt cab rack, then your cab rack warranty will be void.

WARNING:

NEVER reuse a mounting kit. **ALWAYS** read and follow the Merritt Mounting Kit Assembly Instructions to ensure proper installation. If you do not have the proper equipment or skill to install the cab rack, take your vehicle to an authorized dealer.





Northern Light CR



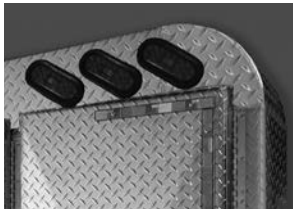
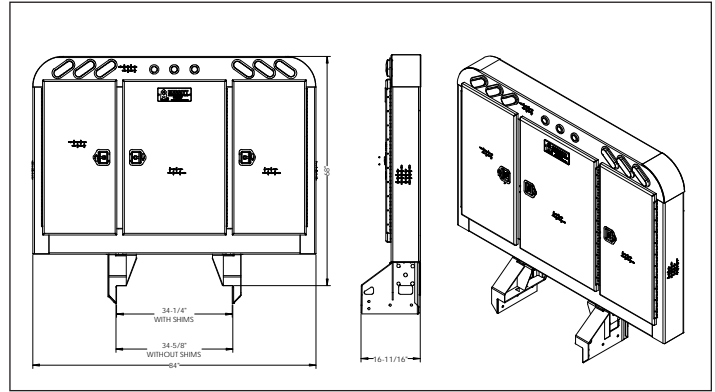
- The Northern-Light Cab Rack comes standard with 3-door enclosures, 2 chain hangers in each outside compartment and 2 shelves in the center compartment.
- Includes 9 LED lights with a 6-foot wiring harness for hassle free installation.
- Designed without external I-beams which allows the cab rack to be mounted 5in. closer to the cab, providing maximum frame rail space.
- The unique foot assembly allows you to mount with a 3240 U-bolt kit or it can be mounted by bolting directly through the frame using grade 8 bolts. Refer to Merritt mounting instructions for correct installation.
- Available in 8in or 11in depths.
- Doors available in: Diamond Plate Aluminum, Bright Aluminum, or Stainless Steel.

Models and/or Specifications Subject to Change Without Notice.



STEP 1:

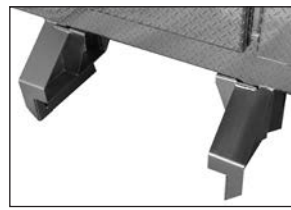
PART#	DESCRIPTION	HxW	WT.
3700	8" Deep, All Diamond Plate	68" x 84"	310
3701	8" Deep, Bright Alum Doors	68" x 84"	310
3702	8" Deep, Stainless Steel Doors	68" x 84"	327
3710	11" Deep, All Diamond Plate	68" x 84"	334
3711	11" Deep, Bright Alum Doors	68" x 84"	334
3712	11" Deep, Stainless Steel Doors	68" x 84"	363
3240	Northern-Light Clamp Kit (14" U-bolts)	-	25



Three LED stop/turn lights in each corner.



Three LED marker lights centered.



The foot is made of steel and is Zinc plated for anti-rust and a finished look.



Foot assembly with the cut outs for the U-bolts to mount through and also, the pre-drilled mounting holes for side mounting. Your choice!



Inside view of the foot. Please note the design to achieve the strength needed.



Center compartment with 2 shelves.



Chain hangers in each side compartment



No rear Beams. You can get the unit closer to the cab than a normal CR.



Must be side mounted (drilled) or mounted with the 3240 kit.

This cab rack is NOT A SAFETY DEVICE and will NOT PREVENT SERIOUS INJURY or DEATH from forward shifting cargo as a result of an accident or improper securement.

To prevent SERIOUS INJURY or DEATH:

- ALWAYS secure your cargo in compliance with FMCSA/DOT regulations. See 49 CFR 393 for specific requirements. Be aware of any applicable state motor carrier regulations.
- NEVER consider this cab rack to be part of your cargo securement system. It is not a substitute for any cargo securement device and does not change any of the cargo securement requirements.
- NEVER haul a log trailer or a pole trailer with this cab rack installed. It is a misuse of the cab rack and is strictly prohibited by Merritt Aluminum Products Company.
- NEVER allow cargo to contact cab rack or use cab rack as a tie down point.
- INSPECT cab rack weekly for cracks or damage. If damaged, replace cab rack.
- CHECK torque of all bolts every 90 days. Bolts on Moon Brackets 150ft.-lbs. dry.
- Use cab rack for storing chains and equipment. For more information, visit www.merrittproducts.com
- ONLY use a Merritt Mounting Kit. If a Merritt Mounting Kit is not used to install a Merritt cab rack, then your cab rack warranty will be void.

WARNING:

NEVER reuse a mounting kit. ALWAYS read and follow the Merritt Mounting Kit Assembly Instructions to ensure proper installation. If you do not have the proper equipment or skill to install the cab rack, take your vehicle to an authorized dealer.





Dyna-Drom CR



#302

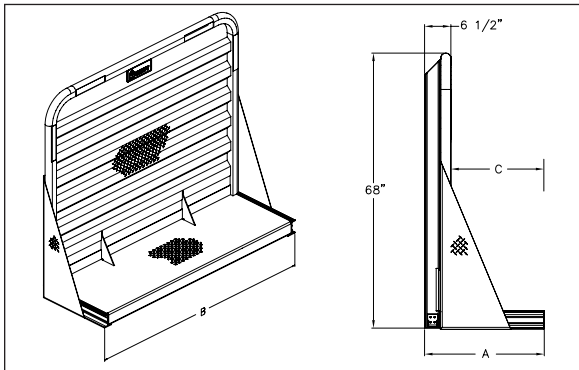
- Great for storage, one door, two door and full three door enclosures are available. Internal shelves and chain hangers are popular options. Keep your storage items out of the weather and out of sight.
- Drom decks available from 30" to 96".
- Decks are designed to carry 1000 lbs. per linear foot, allowing for more cargo carrying area.
- Aerodynamic shape patterned with the new truck designs.
- Full enclosure option available on all models.

Models and/or Specifications Subject to Change Without Notice.



STEP 1: Dyna-Drom

PART#	DESCRIPTION	HxWxL	WT.
302	Dyna-Drom	68" x 80" x 30"	212
303	Dyna-Drom	68" x 80" x 48"	271
304	Dyna-Drom	68" x 80" x 72"	319
305	Dyna-Drom	68" x 80" x 96"	388
346	Dyna-Drom	68" x 86" x 30"	227
347	Dyna-Drom	68" x 86" x 48"	291
348	Dyna-Drom	68" x 86" x 72"	343
349	Dyna-Drom	68" x 86" x 96"	417
342	Dyna-Drom	68" x 96" x 30"	244
343	Dyna-Drom	68" x 96" x 48"	300
344	Dyna-Drom	68" x 96" x 72"	360
345	Dyna-Drom	68" x 96" x 96"	440



STEP 2: Dyna-Drom Options

OPTION#	DESCRIPTION	WT.
142	Grab Handle, 25"	1
144	Bracket, Load Light	1
369	E-Z View Window	-
386	E-Z View Window, Full View	-
128	Chain Rack, without Cover	3
147	Chain Rack, with Locking Cover	5
359	Chain Tray, Drom, Full Width	27

OPTION#	DESCRIPTION	HxWxL	WT.
414	Enclosure 3-Door	64" x 80" x 14"	127
356	Enclosure 3-Door	64" x 86" x 14"	136
357	Enclosure 3-Door	64" x 96" x 14"-	145

Enclosures:

- Extruded door frame with a full perimeter automotive grade door seal.
- Piano style hinges, 2" Stainless steel Hinge.
- Stainless steel door option available.

STEP 3: Mounting Options

PART#	MOUNTING KIT
351	Drom Mounting Kit for Decks to 4' - 14" Bolts
353	Drom Mounting Kit for Decks 4'6" to 8' - 14" Bolts
354	Drom Mounting Kit for Decks 8'6" & Over - 14" Bolts

- 17" U-bolts are available upon request for chassis with deep frame dimensions.
- Must be installed to Merritt Specifications with a Merritt Mounting Kit.
- Mounting Kits not Included.



This cab rack is NOT A SAFETY DEVICE and will NOT PREVENT SERIOUS INJURY or DEATH from forward shifting cargo as a result of an accident or improper securement.

To prevent SERIOUS INJURY or DEATH:

- ALWAYS secure your cargo in compliance with FMCSA/DOT regulations. See 49 CFR 393 for specific requirements. Be aware of any applicable state motor carrier regulations.
- NEVER consider this cab rack to be part of your cargo securement system. It is not a substitute for any cargo securement device and does not change any of the cargo securement requirements.
- NEVER haul a log trailer or a pole trailer with this cab rack installed. It is a misuse of the cab rack and is strictly prohibited by Merritt Aluminum Products Company.
- NEVER allow cargo to contact cab rack or use cab rack as a tie down point.
- INSPECT cab rack weekly for cracks or damage. If damaged, replace cab rack.
- CHECK torque of all bolts every 90 days. Bolts on Moon Brackets 150ft.-lbs. dry.
- Use cab rack for storing chains and equipment. For more information, visit www.merrittproducts.com
- ONLY use a Merritt Mounting Kit. If a Merritt Mounting Kit is not used to install a Merritt cab rack, then your cab rack warranty will be void.

WARNING:

NEVER reuse a mounting kit. ALWAYS read and follow the Merritt Mounting Kit Assembly Instructions to ensure proper installation. If you do not have the proper equipment or skill to install the cab rack, take your vehicle to an authorized dealer.





Aluminum Cabinet CR



- Large storage area to keep your storage items protected from the weather and out of sight.
- No rear uprights allows for closer installation to the truck cab.
- Chain hangers and a full-width top shelf are built into the design of our cabinet cab racks.
- Full three door enclosure. A very compact, usable storage unit.
- Additional mounting brackets not required for standard installations (drilling is required).
- A Problem Solver (Kit #311) mounting kit is available for non-standard applications.
- Side door option available for easy access from the ground.
- Shims are provided to accommodate all standard frame widths.
- Bright Aluminum or Stainless Steel doors are available.

Models and/or Specifications Subject to Change Without Notice.



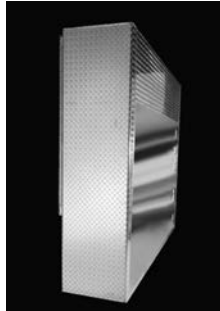
STEP 1: BASE

PART#	DESCRIPTION	HxWxL	WT.
310	Cabinet-CR	68" x 84" x 18"	320

STEP 2: Additional Options

OPTION#	DESCRIPTION	WT.
309	Tarp Strap Holders	1
311	Problem Solver Mounting Kit	81
312	Side Door Assembly (left or right)	16
313	Sliding Beacon Bracket	10
314	Chain Hangers	2
392	Hose Tender	6

- Use grade 8 bolts to mount. Refer to the Merritt Mounting Instructions for correct installation.
- Extruded Door Frame with a Full Perimeter Automotive Grade Door Seal.
- 2" Stainless steel Hinges.
- Diamond Plate Surface.
- Stainless steel Door Locks with Dust Covers.
- New Side Door Option for Easier Access to Your Storage Areas.
- UHMW used for Lock Striker Plate, for Easier Operation and Longer Life.



Back side of 310

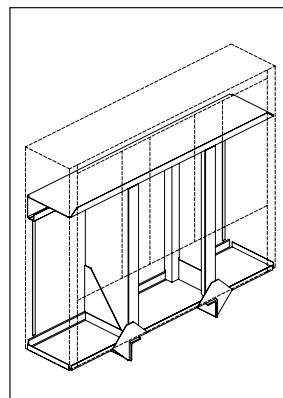
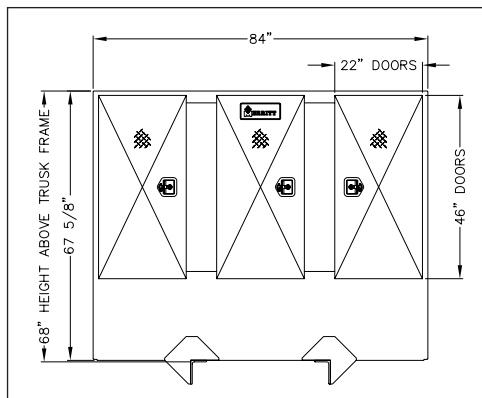


392 & 313 pictured

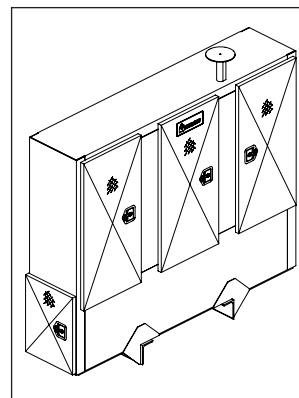


Internal View

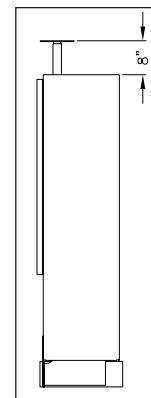
STEP 3: Call Merritt Customer Service: 800.525.0107



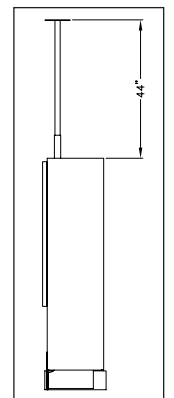
NOTE: Interior top shelf and dividers shown



NOTE: Shown with options #312 - side door assembly & #313 - sliding beacon bracket



Side View - Beacon Bracket DOWN Position



Side View - Beacon Bracket UP Position

This cab rack is NOT A SAFETY DEVICE and will NOT PREVENT SERIOUS INJURY or DEATH from forward shifting cargo as a result of an accident or improper securement.

To prevent SERIOUS INJURY or DEATH:

- ALWAYS secure your cargo in compliance with FMCSA/DOT regulations. See 49 CFR 393 for specific requirements. Be aware of any applicable state motor carrier regulations.
- NEVER consider this cab rack to be part of your cargo securement system. It is not a substitute for any cargo securement device and does not change any of the cargo securement requirements.
- NEVER haul a log trailer or a pole trailer with this cab rack installed. It is a misuse of the cab rack and is strictly prohibited by Merritt Aluminum Products Company.
- NEVER allow cargo to contact cab rack or use cab rack as a tie down point.
- INSPECT cab rack weekly for cracks or damage. If damaged, replace cab rack.
- CHECK torque of all bolts every 90 days. Bolts on Moon Brackets 150ft.-lbs. dry.
- Use cab rack for storing chains and equipment. For more information, visit www.merrittproducts.com
- ONLY use a Merritt Mounting Kit. If a Merritt Mounting Kit is not used to install a Merritt cab rack, then your cab rack warranty will be void.

WARNING:

NEVER reuse a mounting kit. ALWAYS read and follow the Merritt Mounting Kit Assembly Instructions to ensure proper installation. If you do not have the proper equipment or skill to install the cab rack, take your vehicle to an authorized dealer.





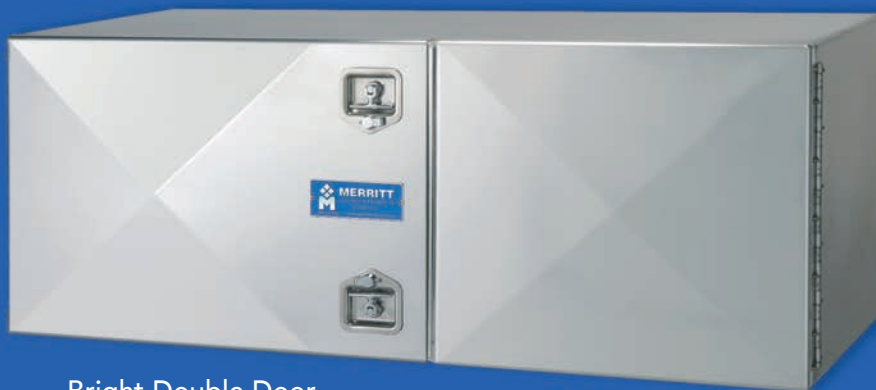
Premium Underbody Storage Solution



Diamond Plate Double Door



Diamond Plate Single Door



Bright Double Door



Bright Single Door

- 42 Standard Sizes available!
- Constructed of light weight, heavy duty aluminum.
- Protective film on Bright Doors for improved shipping protection.
- Polished Stainless Steel T-handle latches with locks and 2 keys.
- Doors available in Diamond Plate, Bright Aluminum, or Stainless Steel.
- Stainless Steel piano style hinge for added durability.
- Custom sizes and designs are available to meet specific needs.
- **Door lanyards and shelf options available.**

Models and/or Specifications Subject to Change Without Notice.





BRIGHT DOORS

PART#	DIM. HxWxL & DESCRIPTION	WT.
201	18"x18"x18" Single Door	25
203	18"x18"x24" Single Door	36
205	18"x18"x30" Single Doors	42
207	18"x18"x36" Single Door	48
287	18"x18"x36" Double Door	49
209	18"x18"x48" Single Door	60
211	18"x18"x48" Double Door	61
289	18"x18"x60" Single Door	69
291	18"x18"x60" Double Door	70
213	24"x24"x24" Single Door	47
215	24"x24"x30" Single Door	56
217	24"x24"x36" Single Door	64
235	24"x24"x36" Double Door	61
219	24"x24"x48" Single Door	77
221	24"x24"x48" Double Door	79
223	24"x24"x60" Single Door	105
225	24"x24"x60" Double Door	107
293	18"x24"x48" Single Door	66
295	18"x24"x48" Double Door	67
297	18"x24"x60" Single Door	87
299	18"x24"x60" Double Door	88

*Stainless steel Door Option Available.

DIAMOND PLATE DOORS

PART#	DIM. HxWxL & DESCRIPTION	WT.
202	18"x18"x18" Single Door	25
204	18"x18"x24" Single Door	36
206	18"x18"x30" Single Doors	42
208	18"x18"x36" Single Door	48
288	18"x18"x36" Double Door	49
210	18"x18"x48" Single Door	60
212	18"x18"x48" Double Door	61
290	18"x18"x60" Single Door	69
292	18"x18"x60" Double Door	70
214	24"x24"x24" Single Door	47
216	24"x24"x30" Single Door	56
218	24"x24"x36" Single Door	64
236	24"x24"x36" Double Door	61
220	24"x24"x48" Single Door	77
222	24"x24"x48" Double Door	79
224	24"x24"x60" Single Door	105
226	24"x24"x60" Double Door	107
294	18"x24"x48" Single Door	66
296	18"x24"x48" Double Door	67
298	18"x24"x60" Single Door	87
300	18"x24"x60" Double Door	88

*Custom Designs & Sizes Available.

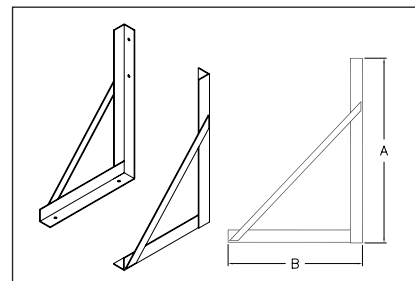
TOOL BOX OPTIONS

OPTION#	DIM. HxWxL & DESCRIPTION	WT.
1518	18" Lanyard Kit, Tool Box	1
1519	18" Lanyard Kit, Tool Box	1
1824	Shelf, Bolt-in, for 18"x24" Tool Box	7
1830	Shelf, Bolt-in, for 18"x30" Tool Box	10
1836	Shelf, Bolt-in, for 18"x36" Tool Box	12
1848	Shelf, Bolt-in, for 18"x48" Tool Box	16
1860	Shelf, Bolt-in, for 18"x60" Tool Box	23
2424	Shelf, Bolt-in, for 24"x24" Tool Box	10
2430	Shelf, Bolt-in, for 24"x30" Tool Box	12
2436	Shelf, Bolt-in, for 24"x36" Tool Box	15
2448	Shelf, Bolt-in, for 24"x48" Tool Box	19
2460	Shelf, Bolt-in, for 24"x60" Tool Box	23

MOUNTING BRACKETS

PART#	DIM. HxWxL & DESCRIPTION	A	B	WT.
117	For 18" Deep Tool Box	23-13/16"	16"	18
118	For 24" Deep Tool Box	29-13/16"	22"	25
620	E-Z Mounting Kit for 18" Tool Boxes	23-13/16"	16"	24
621	E-Z Mounting Kit for 24" Tool Boxes	29-13/16"	22"	31

- All Steel for strength and low cost.
- Zinc Plated for lasting good looks!
- Available for 18" or 24" deep Tool Boxes.
- Lightweight design - 117 only 18 lbs, 118 only 25 lbs.



- Vertical angle is high strength alloy and 1/4" thick.

- UHMW Plastic used on striker plate for longer latch assembly life and easier operation.
- Automotive grade door seals, secures the entire perimeter, for a more water resistant seal
- Merritt's extruded door frame provides a weather resistant seal.
- Lap joint weld provides material overlap in the corner where it is needed for superior strength and longer life (compared to most boxes that are constructed with butt welds).



Stackable Aluminum Boxes



- Ideal for flat mount, surface, or stacked applications.
- Constructed of light weight, heavy duty aluminum.
- Polished Stainless Steel T-handle latches with locks.
- Doors available in bright finish or diamond plate.
- Bullet-style hinge with 1/4" Stainless Steel center pin.
- Protective coating on bright doors for improved shipping protection (to be removed at time of installation).
- Optional Stainless Steel doors available by contacting Sales.
- Custom sizes and designs are available to meet specific needs.

Models and/or Specifications Subject to Change Without Notice.





BRIGHT DOORS

PART#	DIM. HxWxL & DESCRIPTION	WT.
3573	18"x17-3/16"x18" Single Door	24
3575	18"x17-3/16"x24" Single Door	36
3577	18"x17-3/16"x30" Single Doors	42
3579	18"x17-3/16"x36" Single Door	48
3581	18"x17-3/16"x36" Double Door	49
3583	18"x17-3/16"x48" Single Door	60
3585	18"x17-3/16"x48" Double Door	61
3587	18"x17-3/16"x60" Single Door	69
3589	18"x17-3/16"x60" Double Door	70
3613	18"x23-3/16"x48" Double Door	66
3609	18"x23-3/16"x48" Single Door	67
3615	18"x23-3/16"x60" Single Door	87
3617	18"x23-3/16"x60" Double Door	88
3593	24"x23-3/16"x24" Single Door	47
3595	24"x23-3/16"x30" Single Door	56
3597	24"x23-3/16"x36" Single Door	64
3599	24"x23-3/16"x36" Double Door	61
3601	24"x23-3/16"x48" Single Door	77
3603	24"x23-3/16"x48" Double Door	79
3607	24"x23-3/16"x60" Double Door	105
3605	24"x23-3/16"x60" Single Door	107

*Stainless steel Door Option Available.

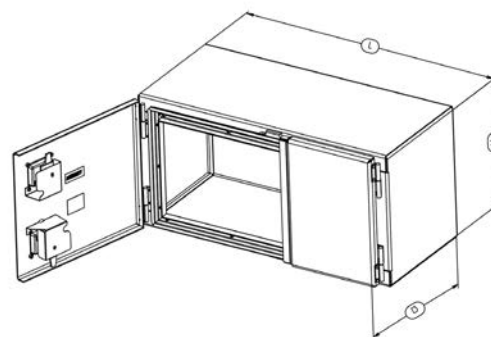
DIAMOND PLATED DOORS

PART#	DIM. HxWxL & DESCRIPTION	WT.
3570	18"x17-3/16"x18" Single Door	25
3572	18"x17-3/16"x24" Single Door	36
3574	18"x17-3/16"x30" Single Door	42
3576	18"x17-3/16"x36" Single Door	48
3578	18"x17-3/16"x36" Double Door	49
3582	18"x17-3/16"x48" Single Door	60
3584	18"x17-3/16"x48" Double Door	61
3588	18"x17-3/16"x60" Single Door	69
3586	18"x17-3/16"x60" Double Door	70
3608	18"x23-3/16"x48" Single Door	47
3612	18"x23-3/16"x48" Double Door	56
3614	18"x23-3/16"x60" Single Door	64
3616	18"x23-3/16"x60" Double Door	61
3590	24"x23-3/16"x24" Single Door	77
3592	24"x23-3/16"x30" Single Door	79
3594	24"x23-3/16"x36" Single Door	105
3596	24"x23-3/16"x36" Double Door	107
3600	24"x23-3/16"x48" Single Door	66
3602	24"x23-3/16"x48" Double Door	67
3604	24"x23-3/16"x60" Single Door	87
3606	24"x23-3/16"x60" Double Door	88

*Custom Designs & Sizes Available.

TOOL BOX OPTIONS

OPTION#	DESCRIPTION	WT.
3546	Kit, Gas Shock and Mount for S-Series and STD Tool Boxes	6
1518	18" Lanyard Kit, Tool Box	1
1519	24" Lanyard Kit, Tool Box	1

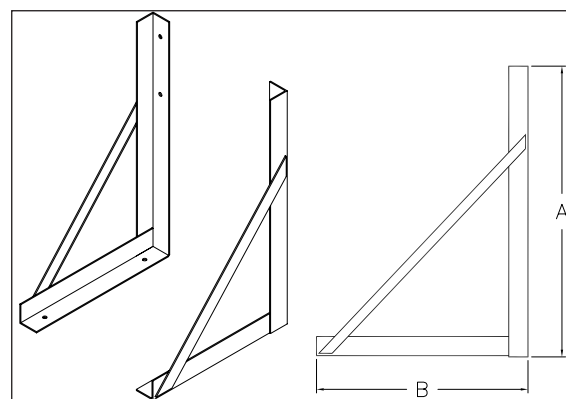


MOUNTING BRACKETS

PART#	DIM. HxWxL & DESCRIPTION	A	B	WT.
117	For 18" Deep Tool Box	23-13/16"	16"	18
118	For 24" Deep Tool Box	29-13/16"	22"	25
620	E-Z Mounting Kit for 18" Tool Boxes	23-13/16"	16"	24
621	E-Z Mounting Kit for 24" Tool Boxes	29-13/16"	22"	31

- All Steel for strength and low cost.
- Zinc Plated for lasting good looks!
- Available for 18" or 24" deep Tool Boxes.
- Lightweight design - 117 only 18 lbs, 118 only 25 lbs.
- Vertical angle is high strength alloy and 1/4" thick.

- UHMW Plastic used on striker plate for longer latch assembly life and easier operation.
- Automotive grade door seals, secures the entire perimeter, for a more water resistant seal
- Merritt's extruded door frame provides a weather resistant seal.
- Lap joint weld provides material overlap in the corner where it is needed for superior strength and longer life (compared to most boxes that are constructed with butt welds).





Heavy Duty Cam-Lock Latch



#6500

- Constructed of light weight, heavy duty aluminum.
- Latch hardware is aluminum electro-polished for superior finish.
- Doors available in bright or diamond plate aluminum.
- 2" Stainless Steel hinge.
- Stainless Steel doors shelving options are available.
- Cam-Lock boxes are available in 18" and 24" heights
- Custom depths and lengths are available to meet specific needs.
- Over 6,500 custom powder coat colors available to match your fleet!

Models and/or Specifications Subject to Change Without Notice.





CAM-LOCK BOX Bright Doors

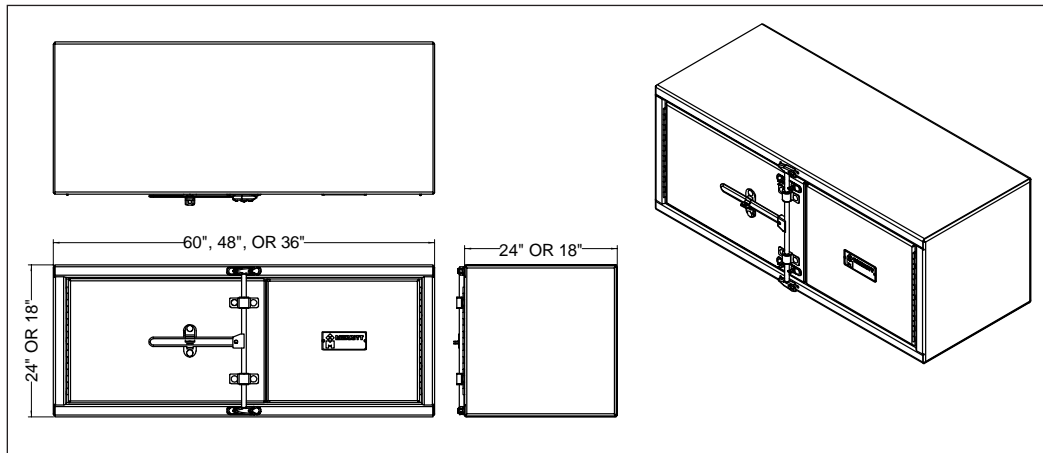
PART#	DIM. HxWxL & DESCRIPTION	WT.
6500	18"x18"x36" Double Door	49
6502	18"x18"x48" Double Door	61
6504	18"x18"x60" Double Door	70
6506	18"x24"x36" Double Door	54
6508	18"x24"x48" Double Door	67
6510	18"x24"x60" Double Door	88
6512	24"x24"x36" Double Door	61
6514	24"x24"x48" Double Door	79
6516	24"x24"x60" Double Door	107

CAM-LOCK BOX Diamond Plate Doors

PART#	DIM. HxWxL & DESCRIPTION	WT.
6501	18"x18"x36" Double Door	50
6503	18"x18"x48" Double Door	62
6505	18"x18"x60" Double Door	71
6507	18"x24"x36" Double Door	55
6509	18"x24"x48" Double Door	68
6511	18"x24"x60" Double Door	89
6513	24"x24"x36" Double Door	62
6515	24"x24"x48" Double Door	80
6517	24"x24"x60" Double Door	108

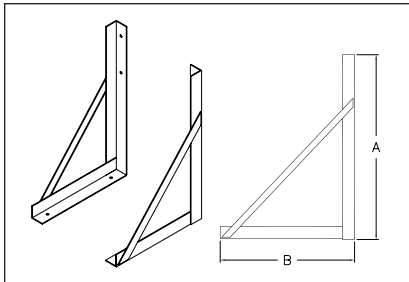
CAM-LOCK BOX OPTIONS

OPTION#	DIM. HxWxL & DESCRIPTION	WT.
1836	Shelf, Bolt-In, for 18"x36" Tool Box	12
1848	Shelf, Bolt-In, for 18"x48" Tool Box	16
1860	Shelf, Bolt-In, for 18"x60" Tool Box	23
2436	Shelf, Bolt-In, for 24"x36" Tool Box	15
2448	Shelf, Bolt-In, for 24"x48" Tool Box	19
2460	Shelf, Bolt-In, for 24"x60" Tool Box	23



- Automotive grade door seals, secures the entire perimeter, for a more water resistant seal.
- Lap joint weld provides material overlap in the corner where it is needed for superior durability and longer life (compared to most boxes that are constructed with butt weld).

MOUNTING BRACKETS



PART#	DIM. HxWxL & DESCRIPTION	A	B	WT.
117	For 18" Deep Tool Box	23-13/16"	16"	18
118	For 24" Deep Tool Box	29-13/16"	22"	25
620	E-Z Mounting Kit for 18" Tool Boxes	23-13/16"	16"	24
621	E-Z Mounting Kit for 24" Tool Boxes	29-13/16"	22"	31

- All Steel for strength and low cost, Zinc Plated for lasting good looks!
- Available for 18" or 24" deep Tool Boxes.
- Lightweight design - 117 only 18 lbs, 118 only 25 lbs.
- Vertical angle is high-strength alloy and 1/4" thick. Lightweight design.





Functional Storage Space



No-Step
Saddle Box



Top-Opening
Wide Access
Door



Bright Door
with Steps



Fold-Down Door
with or without
Folding Grab
Handle



- All Saddle Boxes available with or without steps.
- Standard fold-down door or top-opening wide access door available in all Saddle Boxes.
- Heavy Duty designs on all storage boxes for longer life.
- Aluminum for low weight, yet high strength.
- Saddle Boxes available with internal chain rack or dividers.
- Extruded door frame with full perimeter automotive door seal for a water resistant closure.
- Mounting Kit welded inside all 12", 18", 24" & 30" Saddle Boxes (bolts not included).
- 36" Saddle Box must be mounted using external brackets (480 & 481, use bracket 117; 482 & 483, use bracket 118).

Models and/or Specifications Subject to Change Without Notice.



BRIGHT DOORS

PART#	DIM. HxWxL & DESCRIPTION	WT.
450	22" x 21" x 12"	27
452	23-1/2" x 28-1/2" x 12" w/ step	34
460	22" x 21" x 18"	32
462	23-1/2" x 28-1/2" x 18" w/ step	42
470	22" x 21" x 24"	43
472	23-1/2" x 28-1/2" x 24" w/ step	56
480*	22" x 21" x 36"	56
482*	23-1/2" x 28-1/2" x 36" w/ step	76
478	22" x 21" x 30"	50
488	23-1/2" x 28-1/2" x 30" w/ step	67

* Model 117 or 118 Mounting Kit Required.

DIAMOND PLATE DOORS

PART#	DIM. HxWxL & DESCRIPTION	WT.
451	22" x 21" x 12"	27
453	23-1/2" x 28-1/2" x 12" w/ step	34
461	22" x 21" x 18"	32
463	23-1/2" x 28-1/2" x 18" w/ step	43
471	22" x 21" x 24"	44
473	23-1/2" x 28-1/2" x 24" w/ step	57
481*	22" x 21" x 36"	57
483*	23-1/2" x 28-1/2" x 36" w/ step	77
477	22" x 21" x 30"	52
487	23-1/2" x 28-1/2" x 30" w/ step	69

* Model 117 or 118 Mounting Kit Required.

CHAIN RACK KIT

OPTION#	DIM. HxWxL & DESCRIPTION	WT.
486-1	Saddle Box Chain Rack, 12"	1
486-2	Saddle Box Chain Rack, 18"	1
486-3	Saddle Box Chain Rack, 24"	1
486-4	Saddle Box Chain Rack, 36"	1

INTERIOR DIVIDER KITS

OPTION#	DIM. HxWxL & DESCRIPTION	WT.
485-1	Saddle Box Divider Set, 12"	2
485-2	Saddle Box Divider Set, 18"	2
485-3	Saddle Box Divider Set, 24"	2
485-4	Saddle Box Divider Set, 36"	2

FOLDING & FIXED HANDLES

PART#	DIM. HxWxL & DESCRIPTION	WT.
3518	Folding Handle R/H	11
3519	Folding Handle L/H	11
3524	Fixed Handle R/H	5
3525	Fixed Handle L/H	5

MOUNTING BRACKETS

PART#	DIM. HxWxL & DESCRIPTION	A	B	WT.
117	For 18" Deep Tool Box	23-13/16"	16"	18
118	For 24" Deep Tool Box	29-13/16"	22"	25
620	E-Z Mounting Kit for 18" Tool Boxes	23-13/16"	16"	24
621	E-Z Mounting Kit for 24" Tool Boxes	29-13/16"	22"	31

- All Steel for strength and low cost, Zinc Plated for lasting good looks!
- Available for 18" or 24" deep Tool Boxes.
- Lightweight design - #117, only 18 lbs; #118, only 25 lbs!
- Folding and Fixed Handles for Saddle Boxes do not work in conjunction with external mounting kits (117, 118, 620 & 621).

TOP-OPENING SADDLE BOXES

- Available in bright aluminum or diamond plate doors.
- Steps optional in all sizes.
- Top step opens with door for wider storage access.
- Gas shocks included for easy opening.
- Internal mounting included on boxes up to 24" wide.
- Locking T-Handle latch with dust cover and 2 keys.
- Grab handles available.

BRIGHT DOORS

PART#	DIM. HxWxL & DESCRIPTION	WT.
6450	22"x21"x12"	41
6452	23.5"x28.5"x12" w/ Step	49
6460	22"x21"x18"	56
6462	23.5"x28.5"x18" w/ Step	68
6470	22"x21"x24"	57
6472	23.5"x28.5"x24" w/ Step	87
6478	22"x21"x30"	72
6480	22"x21"x36"	80
6482	23.5"x28.5"x36" w/ Step	107
6488	23.5"x28.5"x30" w/ Step	98

DIAMOND PLATE DOORS

PART#	DIM. HxWxL & DESCRIPTION	WT.
6451	22"x21"x12"	41
6453	23.5"x28.5"x12" w/ Step	49
6461	22"x21"x18"	56
6463	23.5"x28.5"x18" w/ Step	68
6471	22"x21"x24"	57
6473	23.5"x28.5"x24" w/ Step	87
6477	22"x21"x30"	72
6481	22"x21"x36"	80
6483	23.5"x28.5"x36" w/ Step	107
6487	23.5"x28.5"x30" w/ Step	98



Your Storage Solution

Merritt's Promise

Our storage boxes are crafted with precision using high-grade aluminum alloy, ensuring a perfect balance of low weight and high strength for extended box life. Each box features an extruded door frame, providing unparalleled strength and product longevity. Built with time-proven designs and Merritt's signature features, our storage boxes boast a longer product life and reduced life cycle cost. With an extruded door frame and automotive door seal, our boxes offer superior water resistance and added strength, giving you peace of mind in any condition. Options include bright aluminum and stainless steel doors and lids, allowing you to customize storage box to fit your exact needs!



Logger Box



Between-the-Frame Tool Box



#3552

Battery Boxes



#492

Cab Access Box with Step



#3521

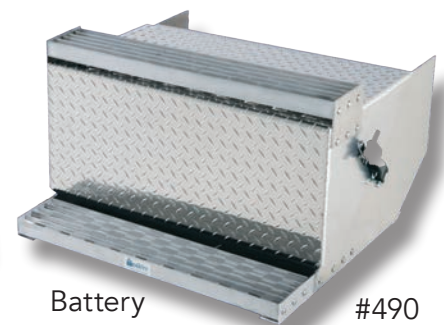


#254

Fairing Box



Battery Box with Step #3563



#490

Battery Box

Models and/or Specifications Subject to Change Without Notice.





CAB ACCESS SIDE STORAGE BOXES

PART#	DIM. HxWxL & DESCRIPTION	WT.
492	18"x 28-7/8"x 30-1/8" Complete with Steps	60
493	15-3/4" x 23"x 30-1/8" Without Steps	49
494	18"x 28-7/8"x 24" Complete with Step	57
495	16-1/4"x 23"x 24" Without Steps, Driver Side	43
498	18"x 28-7/8"x 2" Complete With Steps	67

STACK-PACK BATTERY BOXES

PART#	DESCRIPTION	DIM: HxWxL	WT.
3552	2 Battery Box, Vertical	24"x20"x10"	50
3561	2 Battery Box, Vertical w/Step	24"x28"x10"	54
3521-1	2 Battery Box, Horizontal	12"x20"x16"	35
3562-1	2 Battery Box, Horizontal w/Step	13"x15-1/2"x16"	41
3503-1	4 Battery Box, Vertical	24"x20"x16"	60
3504-1	4 Battery Box w/Top Deck Plate, Vertical	25"x20"x16"	63
3556-1	4 Battery Box w/Step	25"x25"x16"	77
3514-1	6 Battery Box, Vertical	24"x20"x10"	77
3563	6 Battery Box, Vertical	24"x20"x10"	105

SIDE-PACK BATTERY BOXES

PART#	DESCRIPTION	DIM: HxWxL	WT.
490	2-Battery Box, Vertical w/Step	16-1/4" x 23"x 30-1/8"	54
491	Side Battery Box	18" x 28-7/8" x 30-1/8"	50

* Without Steps (See below for mounting & battery hold down kits)

FRAME-PACK BATTERY BOXES

PART#	DESCRIPTION	DIM: HxWxL	WT.
258	4 Battery In-Frame Battery Box*	12"x 23"x 27-3/4"	60
259	2 Battery In-Frame Battery Box	12"x 23"x 13-1/3"	28

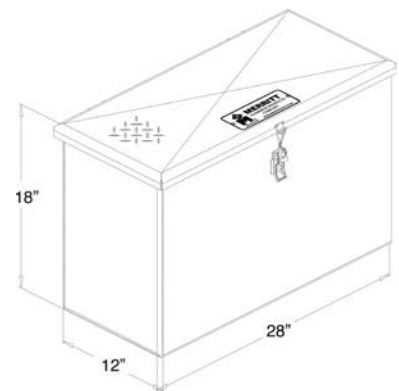
* With Hinged Lid. Includes Mounting and Battery Hold Down Kits.

MOUNTING OPTIONS

PART#	DESCRIPTION	WT.
3507	No-Drill Mounting Kit	28
496	Frame Drill Mounting Kit	21
497	Battery Hold Down Kit (490, 491)	5

DEF STORAGE BOX

PART#	DIM. HxWxL & DESCRIPTION	WT.
3630	18"x28"x12" DEF Box, Aluminum with Diamond Plate Door	*34



FAIRING BOXES

PART#	DIM. HxWxL & DESCRIPTION	WT.
254	20"x18"x12"	32
255	20"x18"x18"	37
256	20"x18"x24"	43

LOGGER BOX

PART#	DIM. HxWxL & DESCRIPTION	WT.
229	Logger Box w/ Cross Frame Mounting Kit: 20" x 23" x 30"	54

BETWEEN-THE-FRAME-TOOL BOX

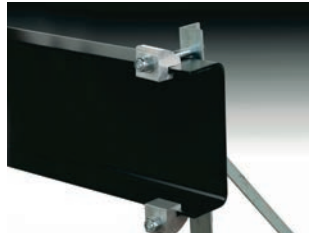
PART#	DIM. HxWxL & DESCRIPTION	WT.
253	Diamond Plate Door w/ Mounting Kit: 22" x 9" x 24"	36



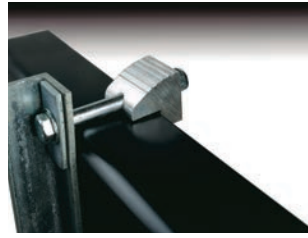
Clamps to Frame Rail



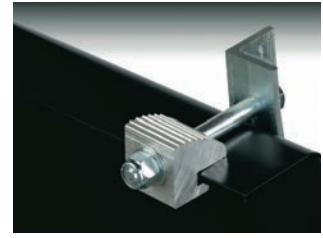
#620 for 18" Deep Boxes
#621 for 21" Deep Boxes



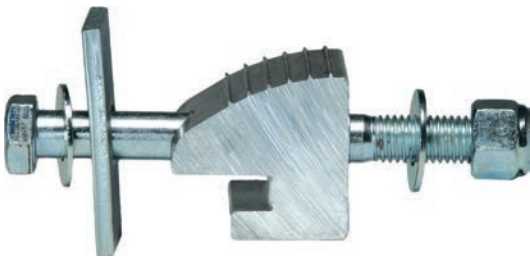
Clamps to flange,
no frame drilling!



All hardware for the installation
is included in the kit.



Secure, FAST to install
and looks good.

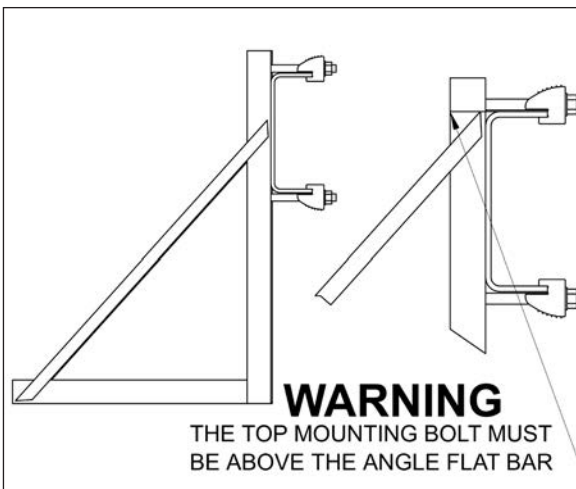
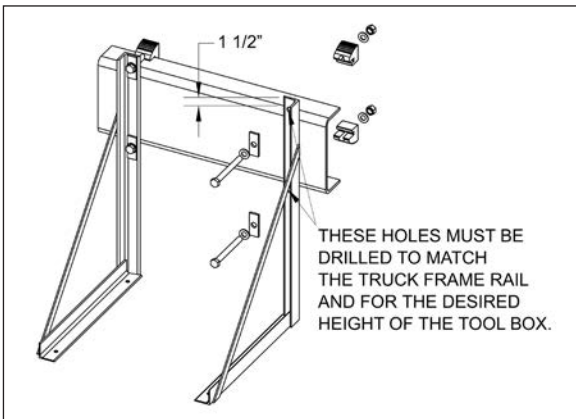


- New system requires no drilling of the frame to mount.
- Strong, durable, easy to install.
- Fits all Merritt side mount Toolboxes and Battery Boxes.
- All steel parts are Zinc plated for longer life and no rusting.
- Load rating equal to the Merritt box rating being mounted.
- Normal hand tools used for installation.

MOUNTING KITS

PART#	DESCRIPTION	WT.
620	Mounting Kit for 18" tool boxes	24
621	Mounting Kit for 24" tool boxes	31

- Kit includes 1 right & 1 left "L-shaped" bracket and the E-Z Clamp.
- Kit also includes all hardware to mount the brackets to the frame.
- Kit does not include the hardware to mount the box to the bracket.
- Must be installed to Merritt specifications, see mounting instructions



To be used on
frames with a
7/16" flange
thickness and
smaller.



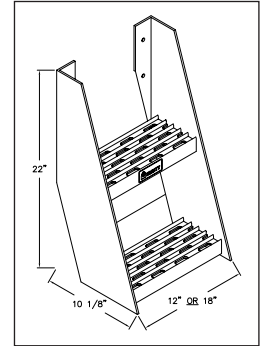
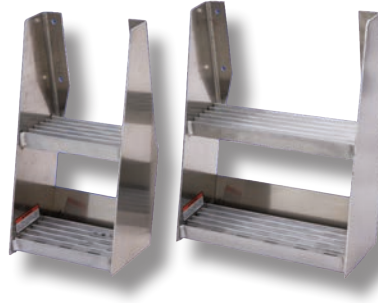


Frame and Tank Steps & Connection Boxes

FRAME STEPS

PART#	DESCRIPTION	WT.
182	Frame Step - 12" Wide	9
362	Frame Step - 18" Wide	12
3000	Frame Step - 24" Wide	15

- Lower Step "foot stop - no shin bruises".
- Sturdy bolt design.
- Bright aluminum side flanges.
- Extruded aluminum nonslip tread available in 12", 18", and 24" models.
- Step and material are DOT compliant



PETERBILT® STYLE TANK STEP

PART#	DESCRIPTION & DIMENSION	WT.
3526	Tank Step - 23" Dia. x 33.5" Long	18
3527	Tank Step - 26" Dia. x 33.5" Long	18
3528	Tank Step - 23" Dia. x 35.5" Long	19
3520	Tank Step - 26" Dia. x 35.5" Long	19

- Fits the Peterbilt® 379 tanks (33.5" and 35.5" widths are standard for the 23" and 26" diameter tanks.)

*For other widths, please provide Diameter and Step Width.



(For Pete Model 379)

CONNECTION BOXES

PART#	DESCRIPTION	WT.
3529	Polished Aluminum w/ Air & Electric, No Light Holes	18
3530	Diamond Plate w/ Air & Electric, No Light Holes	18
3531	*Polished with 5 (2") Round Light Holes	18
3532	*Polished with 2 Oval Light Holes	18
3533	*Diamond Plate w/ 5, 2" Round Light Holes	18
3534	*Diamond Plate w/ 2 Oval Light Holes	18

#3532
Connection Box



#3529 Connection Box
mounted on deck cover
Deck cover not included!

- Smooth finish or Diamond Plate Aluminum, with or without light holes.
- Includes mounting hardware.
- Choose with or without Air, Electric, and Light Holes - customization is welcome!

Product with (*) indicate options with Air and Electric.

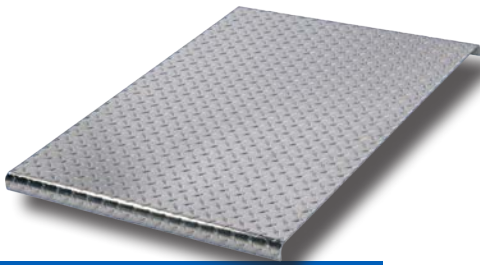


Aluminum Deck Covers

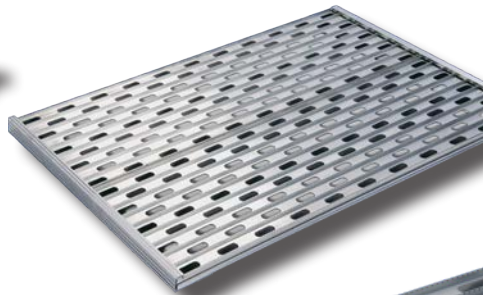
Introducing our Dyna-Deck aluminum deck covers – the ultimate solution for versatile and reliable access to your cargo and equipment on top of your frame. Available in both top and flush mount configurations. Merritt's Dyna-Deck offers modular design for assembling the length you need. With easy slide-together planks and expandable features, customizing your deck cover to fit your specific needs has never been easier.

Enjoy peace of mind when using Merritt's DOT-compliant step material. With self-draining capabilities and a non-skid ribbed deck surface, the Dyna-Deck ensures optimal functionality in any environment. With hassle-free installation the Dyna-Deck cover has become industry standard to replace your OEM catwalk. Dyna-Deck delivers durability and performance without the need for drilling. Elevate your truck's cargo management with Dyna-Deck aluminum deck covers today.

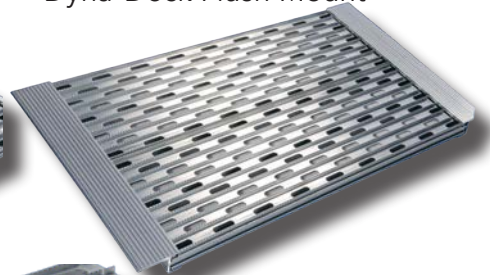
Diamond Plate



Dyna-Deck Top Mount



Dyna-Deck Flush Mount



Also available from Merritt is the Diamond Plate deck cover with, or without stiffeners. this is ideal for your show truck!



Easy Slide Together Panels

Models and/or Specifications Subject to Change Without Notice.



DYNA-DECK TOP MOUNT

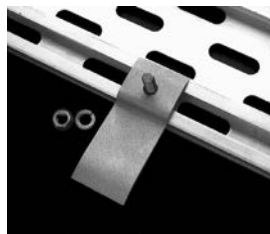
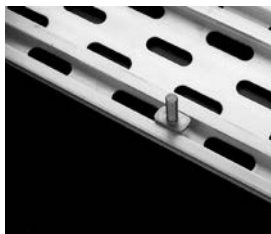
PART#	DIMENSION: Length x Width	WT.
432	18-1/2"L x 33-1/4"W	12
433	28"L x 33-1/4"W	17
434	37-1/2"L x 33-1/4"W	23
435	46-3/4"L x 33-1/4"W	28
436	56"L x 33-1/4"W	34
437	65-1/4"L x 33-1/4"W	40
438	74-1/2"L x 33-1/4"W	46

FLUSH MOUNT

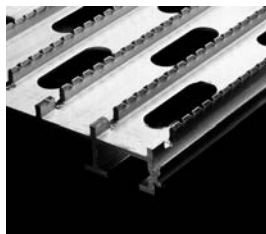
PART#	DIMENSION: Length x Width	WT.
442	18-1/2"L x 30-1/4"W	12
443	28"L x 30-1/4"W	17
444	37-1/2"L x 30-1/4"W	23
445	46-3/4"L x 30-1/4"W	29
446	56"L x 30-1/4"W	35
447	65-1/4"L x 30-1/4"W	41
448	74-1/2"L x 30-1/4"W	47

TOP MOUNT HARDWARE

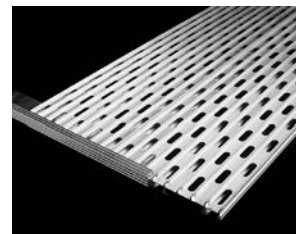
"T-Bolt" Variable Anchor Points – Easy Assembly



No-Skid Ribs

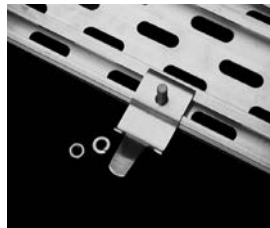


Slip Over Dress Cap

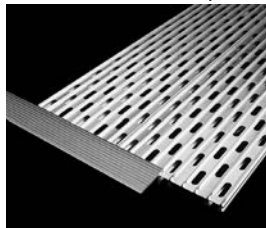


FLUSH MOUNT HARDWARE

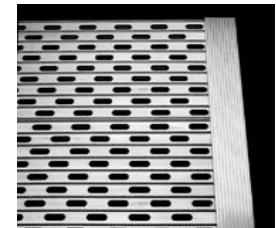
Variable "T-Bolt" Mounting Kit



Slide On Mounting Cap



Ready To Mount



Many more sizes available to meet your needs and lengths of truck beds.

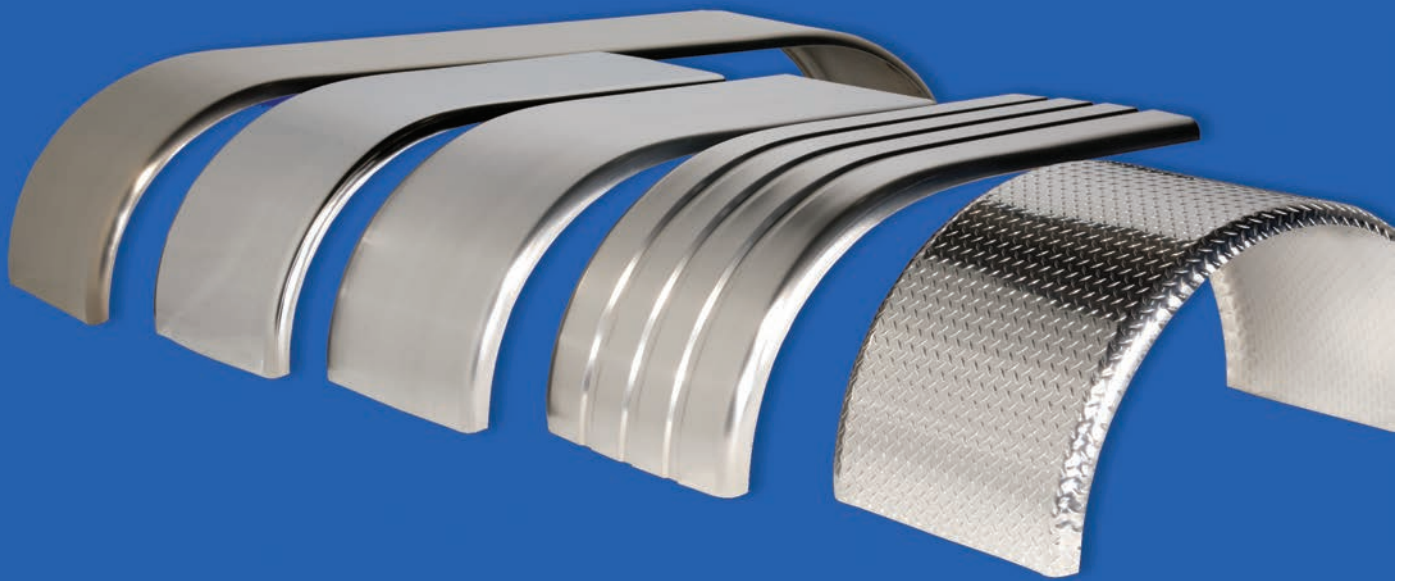
Contact us for more info and to place your special size order.

Deck Covers must be installed to Merritt specifications, with a Merritt Mounting Kit.

* Denotes: Diamond Plate Deck Covers are not to be used as walk areas. Injury may result.

NOTE: Diamond Plate Deck Covers may not meet D.O.T. regulations for walk areas. Check your local D.O.T. for clarification.

Aluminum & Stainless Fenders



Rolled Fenders

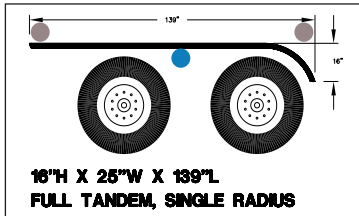
- 36 models of fenders to fit most applications.
- 12 different designs to cover your various needs.
- Different styles and materials to choose from, allowing you to pick the look you want.
- Aluminum available in .090, .100DP or .125 thickness.
- 304 14ga Stainless Steel, #8 polish for strength and bright finish.
- Design a mounting style that will work for your truck.
- Custom lengths are available.
- Use the E-Z Mount Fender Bracket to install.
- Merritt fenders are sold as a single unit; must order two for a set.
- Fenders should be installed to Merritt specifications with a Merritt mounting kit.

CAUTION: Fenders are not to be used as steps or load bearing surfaces.

NOTE: Modifications to the fenders are at the discretion, responsibility, and risk of the installer.

Models and/or Specifications Subject to Change Without Notice.





5001	.090 Smooth Alum. w/ Ribs	35.4
5011	.090 Smooth Alum.	34.0
5021	.100 Diamon Plate Alum.	42.9
5031	.125 Smooth Alum.	47.1
5541	14 Gauge "Bright" S.S.	67.4

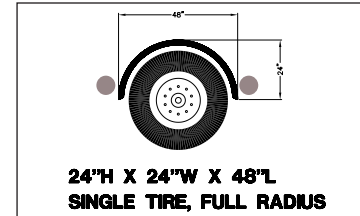
To fit a variety of applications and preference, the below brackets are able to be interchanged.
Suggested mounting locations are indicated by circles relating to model of mounting kit.

Application:

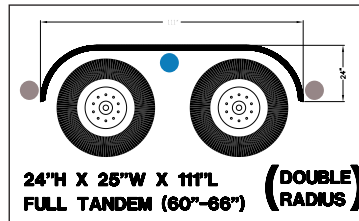
567	4" Model - Black	●
568	8" Model - Black	●
569	10" Model - Black	●

Preference:

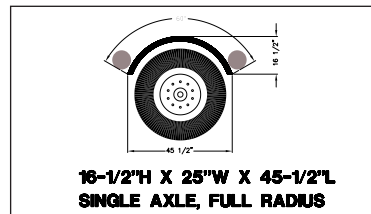
575	Straight Bracket - Black	●
576	Straight Bracket - Chrome	●



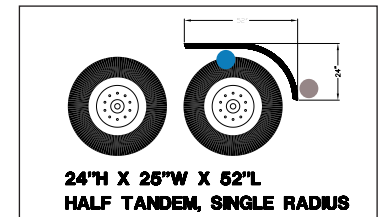
5004	.090 Smooth Alum. w/ Ribs	18.3
5014	.090 Smooth Alum.	17.6
5024	.100 Diamon Plate Alum.	22.0
5034	.125 Smooth Alum.	24.3
5544	14 Gauge "Bright" S.S.	34.8



5002	.090 Smooth Alum. w/ Ribs	33.0
5012	.090 Smooth Alum.	31.9
5022	.100 Diamon Plate Alum.	38.3
5032	.125 Smooth Alum.	44.2
5542	14 Gauge "Bright" S.S.	64.1



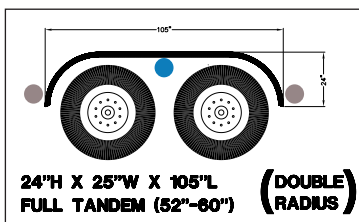
5037	.090 Smooth Alum. w/ Ribs	14.0
------	---------------------------	------



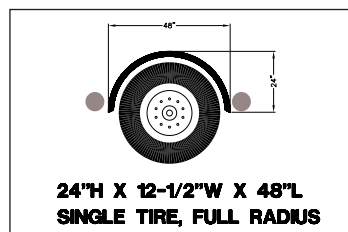
5000	.090 Smooth Alum. w/ Ribs	15.6
5010	.090 Smooth Alum.	15.1
5020	.100 Diamon Plate Alum.	18.1
5030	.125 Smooth Alum.	21.0
5540	14 Gauge "Bright" S.S.	30.4



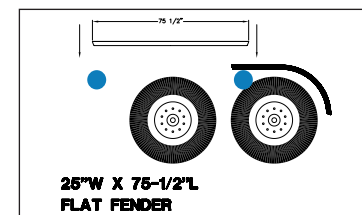
5035	.090 Smooth Alum.	11.1
5036	.125 Smooth Alum.	13.0



5003	.090 Smooth Alum. w/ Ribs	32.2
5013	.090 Smooth Alum.	30.9
5023	.100 Diamon Plate Alum.	38.9
5033	.125 Smooth Alum.	42.7
5543	14 Gauge "Bright" S.S.	61.5

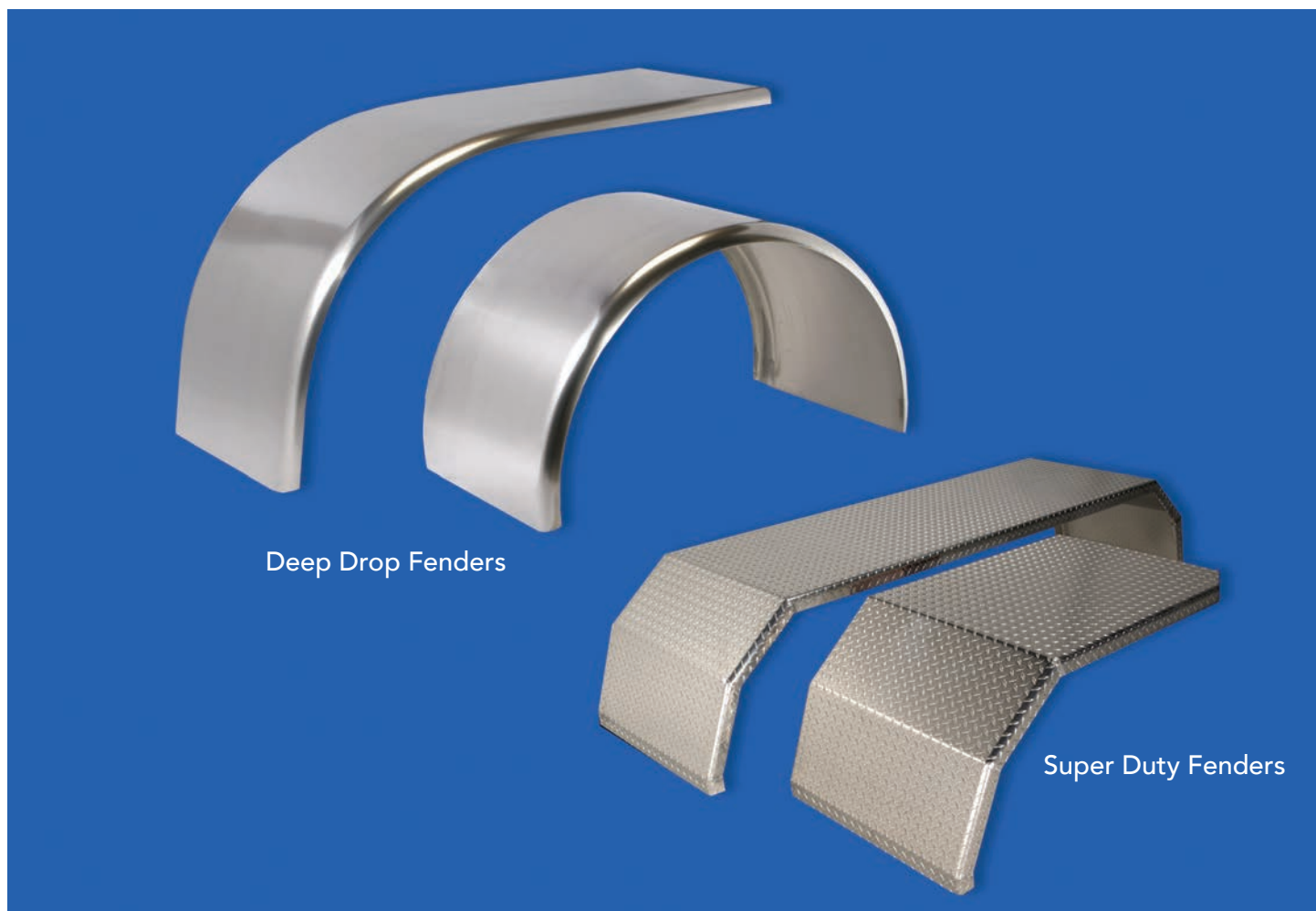


5005	.090 Smooth Alum. w/ Ribs	9.2
------	---------------------------	-----



5025	.090 Smooth Alum. w/ Ribs	18
5026	.090 Smooth Alum.	17.4
5027	.100 Diamon Plate Alum.	20.9
5028	.125 Smooth Alum.	24.1
5549	14 Gauge "Bright" S.S.	34.9

Deep Drop, Super Duty Fenders



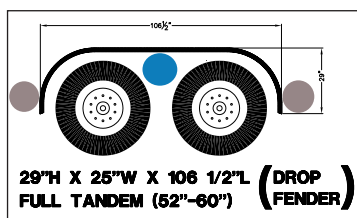
- Deep Drop Wrap with additional 5" on the radius, follows the tire radius.
- Deep Drop Straight with additional 5" added to the bottom of the radius, continues straight down for a custom look at a standard price.
- Different styles and materials to choose from, allowing you to pick the look you want.
- Aluminum available in .090, .100DP or .125 thickness.
- 304 14ga stainless steel, #8 polish for strength and bright finish.
- All Super Duty models are gusseted for added strength and long life.
- Fenders sold as single unit, order 2 for a pair.
- Fenders should be installed to Merritt specifications with a Merritt mounting kit.

CAUTION: Fenders are not to be used as steps or load bearing surfaces.

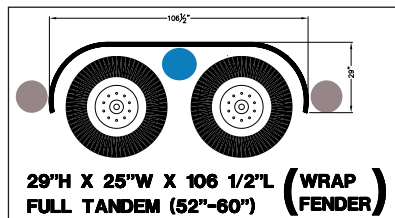
NOTE: Modifications to the fenders are at the discretion, responsibility, and risk of the installer.



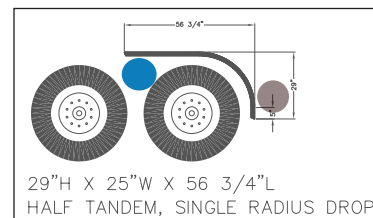
RADIUS WRAP AND DROP FENDERS



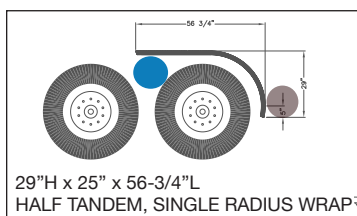
PART#	DESCRIPTION	WT.
5212	.090 Smooth Alum. w/Ribs	34.0
5222	.100 Diamond Plate Alum	42.9
5232	.125 Smooth Alum.	47.1



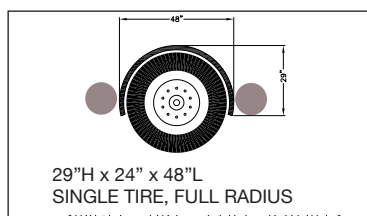
PART#	DESCRIPTION	WT.
5213	.090 Smooth Alum. w/Ribs	31.9
5223	.100 Diamond Plate Alum	38.3
5233	.125 Smooth Alum.	44.2
5547	14 Gauge "Bright" S.S.	64.1



PART#	DESCRIPTION	WT.
5210	.090 Smooth Alum. w/Ribs	30.9
5220	.100 Diamond Plate Alum	38.9
5230	.125 Smooth Alum.	42.7



PART#	DESCRIPTION	WT.
5211	.090 Smooth Alum. w/Ribs	15.1
5221	.100 Diamond Plate Alum	18.1
5231	.125 Smooth Alum.	21.0
5546	14 Gauge "Bright" S.S.	30.4



PART#	DESCRIPTION	WT.
5214	.090 Smooth Alum. w/Ribs	17.6
5224	.100 Diamond Plate Alum	22.0
5234	.125 Smooth Alum.	24.3
5548	14 Gauge "Bright" S.S.	34.8

To fit a variety of applications and preference, the below brackets are able to be interchanged. Suggested mounting locations are indicated by circles relating to model of mounting kit.

Application:

567	4" Model - Black	
568	8" Model - Black	
569	10" Model - Black	

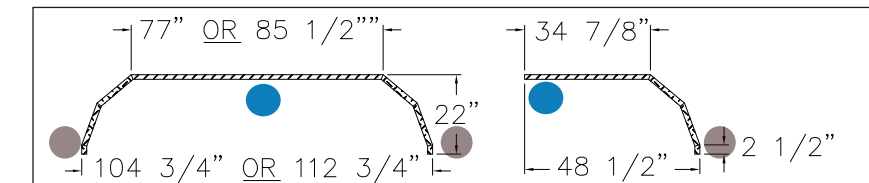
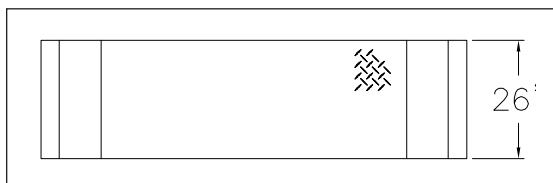
Preference:

575	Straight Bracket - Black	
576	Straight Bracket - Chrome	

SUPER DUTY FENDERS

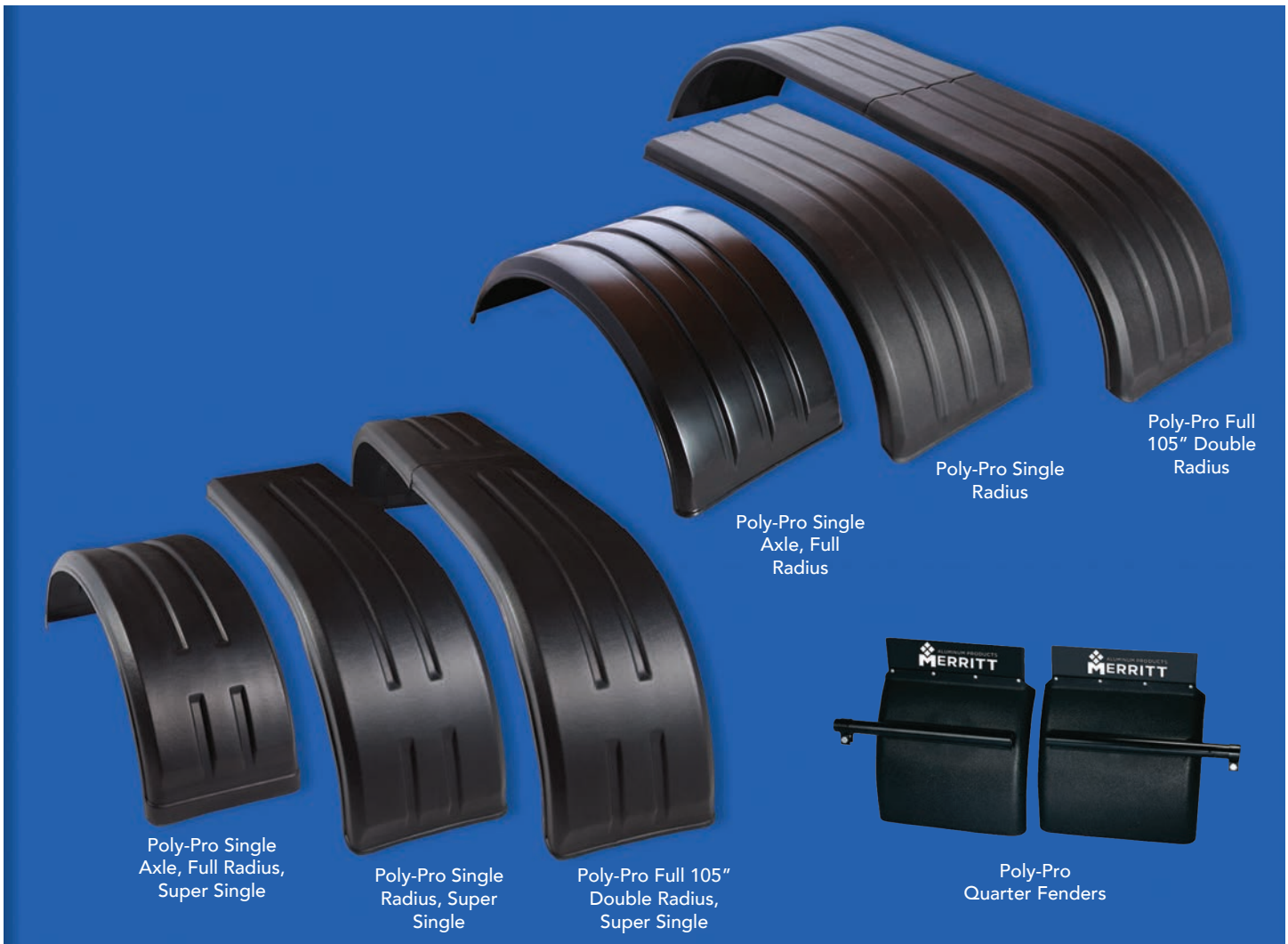
PART#	DESCRIPTION	WT.
179	Full Fender, Tandem Axle 52" to 60"	54
180	Full Fender, Tandem Axle 60" to 66"	38.9
177	Half Fender	42.7

Fenders sold as single units, order two for a set.



- Extra strong design, made of 1/8" thick, diamond plate aluminum alloy, designed with a double break and reinforcing gussets, allowing for added strength and longer life!
- Bright, diamond plate finish – keeps looking good, even in hard use!
- Half fenders have the same strong design and material specifications as the full fenders!

Poly-Fenders



- Made of HDPE – High Density Polyethylene – a flexible material with UV protection.
- Packaged as sets – two fenders per package.
- Full fender is bolted together on the middle.
- Very flexible, low damage fender.
- Use our market tested and easy to install E-Z Mount brackets to mount the Poly-Pro Fender.
- Standard Fender is 25" wide Super Single Fender is 18" wide.



Models and/or Specifications Subject to Change Without Notice.



POLYETHYLENE FENDERS

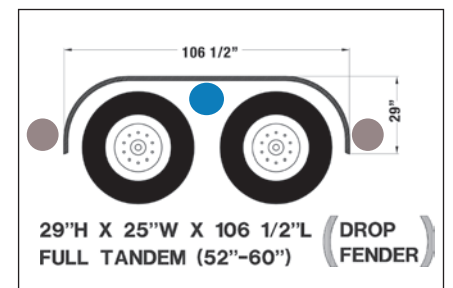
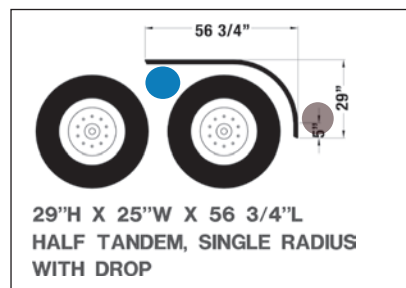
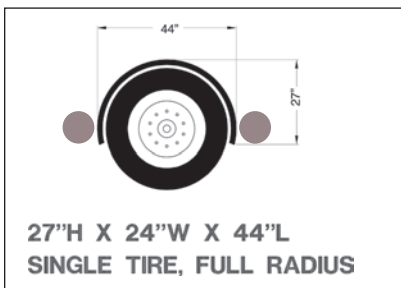
PART#	DESCRIPTION	WT.
5344-2	Poly-Pro Single Axle, Full Radius, High Density Polyethylene Black Non-Paintable Set of 2 Ribbed	20
5340-2	Poly-Pro Half Tandem, Single Radius, High Density Polyethylene Black Non-Paintable Set of 2 Ribbed	30
5343-2	Poly-Pro Full Tandem, Double Radius, High Density Polyethylene Black Non-Paintable Set of 2 Ribbed. <i>Consists of: 4-Half Fenders, 1-Nut & Bolt Package</i>	45



SUPER SINGLE POLYETHYLENE FENDER

PART#	DESCRIPTION	WT.
5345-2	Poly-Pro Single Axle, 18" Wide Full Radius, High Density Polyethylene Black Non-Paintable Set of 2 Ribbed	20
5346-2	Poly-Pro Half Tandem, 18" Wide Single Radius, High Density Polyethylene Black Non-Paintable Set of 2 Ribbed	30
5347-2	Poly-Pro Full Tandem, 18" Wide Double Radius, High Density Polyethylene Black Non-Paintable Set of 2 Ribbed. <i>Consists of: 4-Half Fenders, 1-Nut & Bolt Package</i>	45

● ● = * Refer to mounting key on pages 31, 33

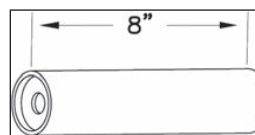


BLACK POLY, ROUND-TUBE QUARTER FENDER

PART#	DIM: Length x Width	WT.
5060-2	24"L x 24"W, pair	34

MOUNTING POST

PART#	DESCRIPTION	WT.
573-2	2 pack	5



1-1/2" ID
1-7/8" OD





E-Z Mount Fender Bracket



- 6 Models to choose from, allowing you to adapt a bracket to your application.
- 3 Adjustable models, giving you greater flexibility.
- All E-Z Fender Mount brackets have the time tested single mounting bolt. Very Quick- Very Easy!
- 3 Straight models available with rubber spacers, which provide 1" clearance between the fender and bracket, allowing dirt and gravel to pass through.
- All hardware is supplied with each bracket for mounting.
- Fender to bracket mounting hardware is made from Stainless Steel.
- Mounting instructions included with each bracket for installation.

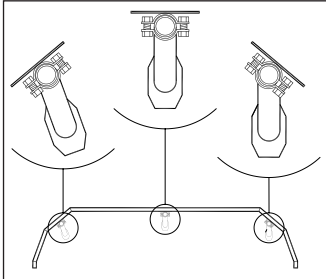
Models and/or Specifications Subject to Change Without Notice.



ADJUSTABLE FENDER BRACKETS

Installation Notes:

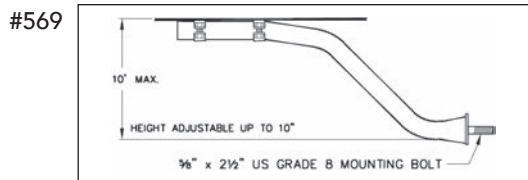
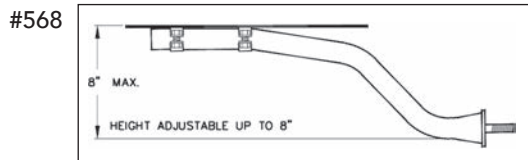
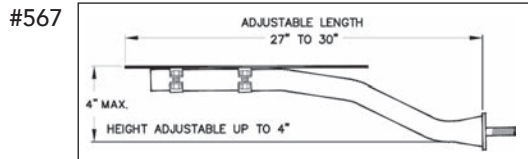
- Backing plate is designed to be used as a template to drill holes in the fender.
- When installing the 3/8" x 2-1/4" bolts, it is recommended that the bolts are not over-tightened, 10 inches/lbs. torque.
- It is necessary to bend TAB Lock-washers downward into the bolt to prevent unwinding.
- Torque 5/8" nuts to 150 ft/lbs.



All three E-Z Fender Brackets are adjustable in length 27" to 30".

Stainless steel cap screw mounting plate bolts are included.

PART#	DESCRIPTION	WT.
567	4" Model - Black	12
568	8" Model - Black	38.9
569	10" Model - Black	42.7



- If your E-Z Mount Bracket, mounted in the center and on the fifth wheel plate, does not have full contact, the 1560 will allow a fix for this.
- Just mount with the "leg" below (see the drawing) the fifth wheel plate then mount the bracket through the plate making a 100% contact mount for the bracket.
- 2 (1560) spacers are included with each E-Z Mount Bracket.

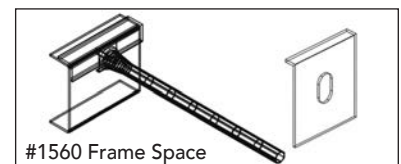
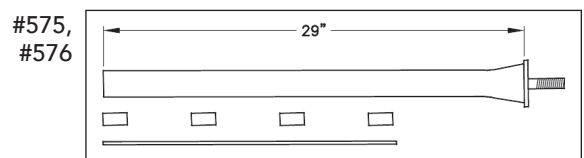
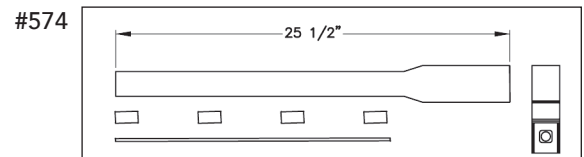
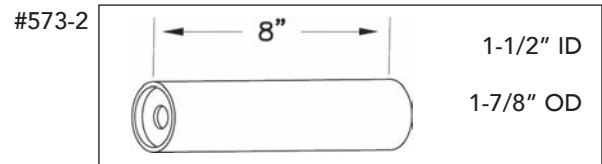
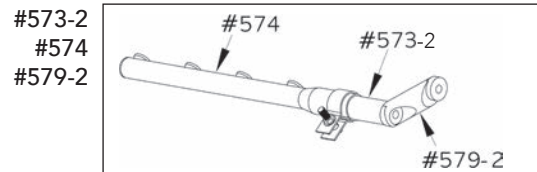
STRAIGHT FENDER BRACKETS

This is a universal bracket designed to mount outside any fender.

Features:

- Mounts solidly to frame with single grade 8 bolt.
- 574 mounts to the existing stub shaft for the 573 post, making those hard installation easier.
- Bracket mounts 1" off fender so rocks and gravel can pass through.

PART#	DESCRIPTION	WT.
573-2	Mounting Post - Zinc Plated	5
574	Post Mount Bracket - Chrome	8
575	Straight Bracket - Black	12
576	Straight Bracket - Chrome	12
579-2	Post Mount Bracket	7
1560	Frame Space - Black	1





Lelox Heavy Duty Fender Brackets



- Two models to choose from, allowing you to adapt a bracket to your application.
- Ideal for heavy duty trucks, thriving in harsh environments.
- Normal hand tools used for installation.
- Light, very strong, and highly durable.
- Heavy duty truck fender mounting kits include:
 - 2 off-set tube mounts (steel tube and cast aluminum boss).
 - 4 cast aluminum mounting brackets that securely fasten onto the tube and the fender.

Models and/or Specifications Subject to Change Without Notice.



OFFSET PIPE FENDER BRACKETS

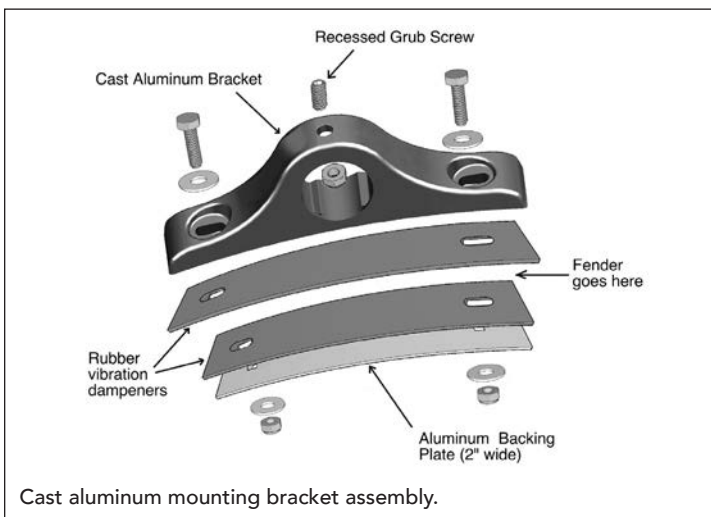
Offset Pipe Fender Bracket is designed to mount outside any fender.



Features:

Offset chassis pipe mounts solidly to frame with single grade 8 bolt.

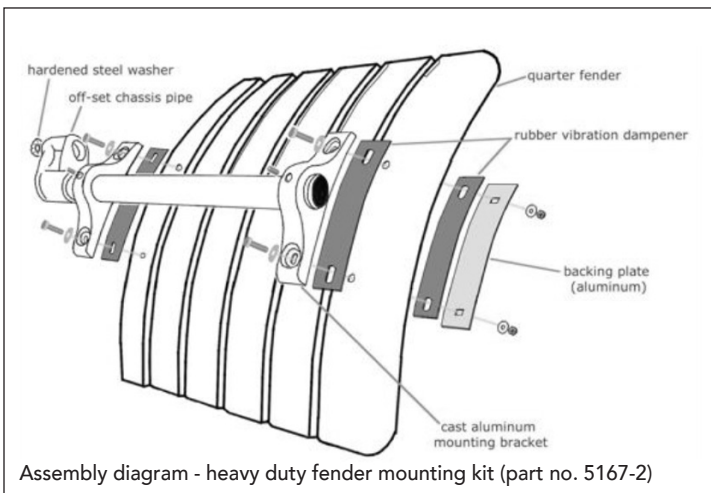
- It is necessary to bend TAB Lock-washers downward into the bolt to prevent unwinding.
- Torque 5/8 Nyloc nuts to 150 ft./lbs.



Features:

Cast Aluminum Brackets mount to the fender as shown, secure the Grub Screw to the pipe shaft, making those hard installations a breeze.

- Mounting bracket backing plate can be used as a template to drill holes in fender.
- When installing the 3/8" x 2-1/4" bolts, it is recommended that the bolts are not over tightened, 10 inch lbs. torque.
- Secure mounting bracket to chassis pipe/tube using "Grub Screw" and 3/8" conelok nut.



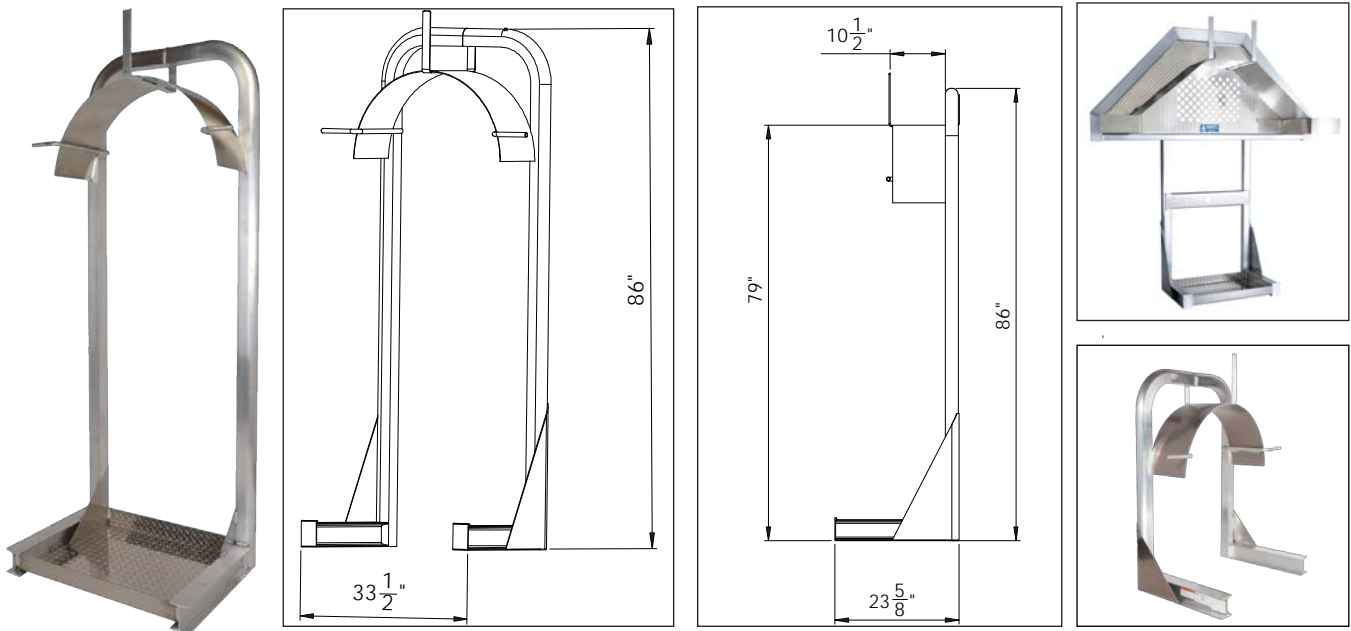
E-Z HD FENDER MOUNTING KITS

PART#	DESCRIPTION	WT.
5167-2	2 mounting tubes, 4 cast, curved fender brackets and mounting hardware	24
5168-2	2 mounting tubes, 4 cast, straight fender brackets and mounting hardware	24





Premium Quality Hose Racks



- Premium alloys used throughout.
- I-Beam foot for a robust product.
- Load tested to 1000lbs static load.
- Heavy-duty mounting kit available.
- Easy to install, yet durable and strong.
- Custom heights available to meet your needs.
- Must be installed to manufacturer specifications.
- Constructed of low weight & high strength aluminum for great looks and weight savings.



#3512
Fitting Box



#3511
Base Tray



#3502
Mounting Kit

HOSE RACK

PART#	DESCRIPTION & DIM: HxDxL	WT.
3513	Hose Rack: 86" x 23-3/8" x 33-1/2"	46
3683	Hose Rack: 46-3/4" x 23-3/8" x 33-1/2"	36
OPTION#	HEAVY DUTY DESCRIPTION & DIM: HxDxL	WT.
6313	Hose Rack: 86" x 23-1/2" x 80-1/2"	120

HOSE RACK OPTIONS

PART#	DESCRIPTION & DIM: HxDxL	WT.
3511	Base Tray: 2-3/4" x 20-1/2" x 30-1/4"	10
3512	Fitting Box: 13-1/2" x 8-1/2" x 33-1/2" (Specify height above frame)	20

HOSE RACK MOUNTING KIT

PART#	DESCRIPTION & DIM: HxDxL	WT.
3502	Mounting Kit	23

Models and/or Specifications Subject to Change Without Notice.



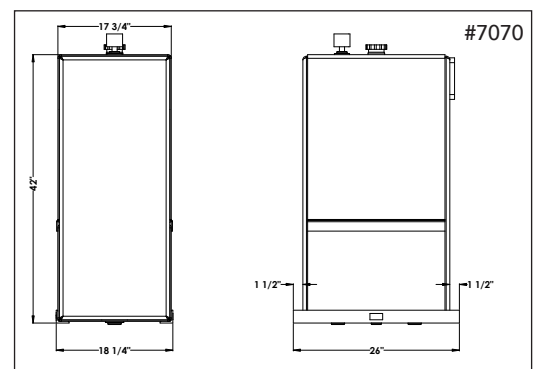
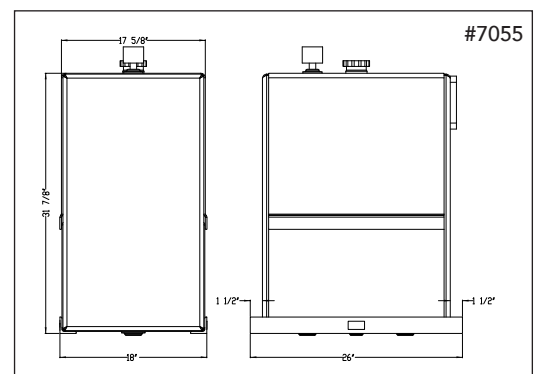
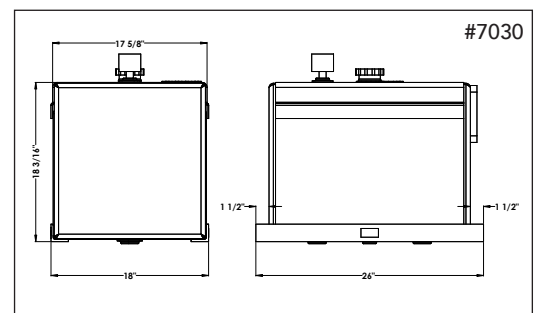
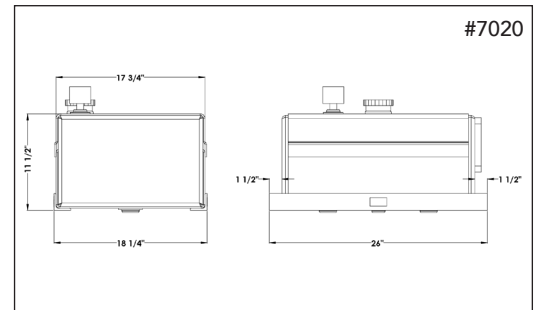
Hydraulic Tank

- Complete Hydraulic Tank Kits include: Reservoir Assembly, Breather Cap, Spring Mounting Kit, Installation Plate, and all Mounting Hardware.
- Space saving design mounts between the feet of a Merritt Cab Rack.
- Raised filler neck with O-ring sealed anodized cap for a cleaner system.
- Fluid level sight gauge with thermometer and metal guard for protection.
- Constructed of durable, 3/16" aluminum.
- Every tank is pressure tested for leaks
- Two 2" ports in the bottom.
- 3/4" magnetic drain plug.
- 3/4" vent.

HYDRAULIC TANKS

PART#	DESCRIPTION	WT.
7020	Hydraulic Tank - 20-gallon Capacity	89
7030	Hydraulic Tank - 30-gallon Capacity	93
7055	Hydraulic Tank - 55-gallon Capacity	118
7070	Hydraulic Tank - 70-gallon Capacity	138

***MORE options to come!





E-Z Spare Tire Carrier



- Strong, heavy duty design.
- D-Tube and Cab Rack foot I-Beam.
- Bright Aluminum throughout.
- Both 24.5 and 22.5 tires will fit.

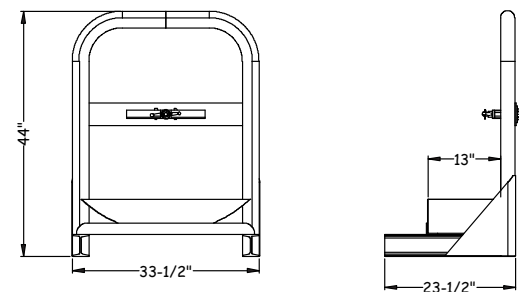
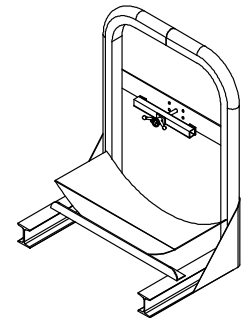
E-Z SPARE TIRE CARRIER

PART#	DESCRIPTION	SIZE	WT.
1630	Spare Tire Carrier - 22.5 and 24.5	13" Tray	43
1631	Spare Tire Carrier - Super Single	18" Tray	55

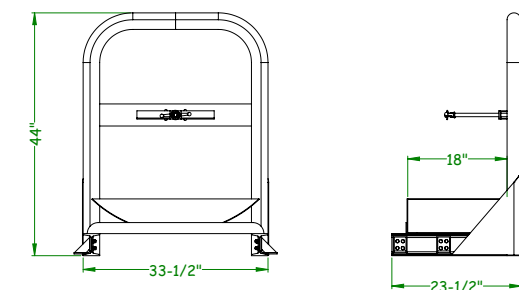
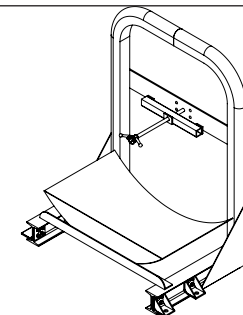
MOUNTING KITS

PART#	DESCRIPTION	WT.
3502	Mounting Kit for 1630	23
3539	Mounting Kit for 1630	17

#1630



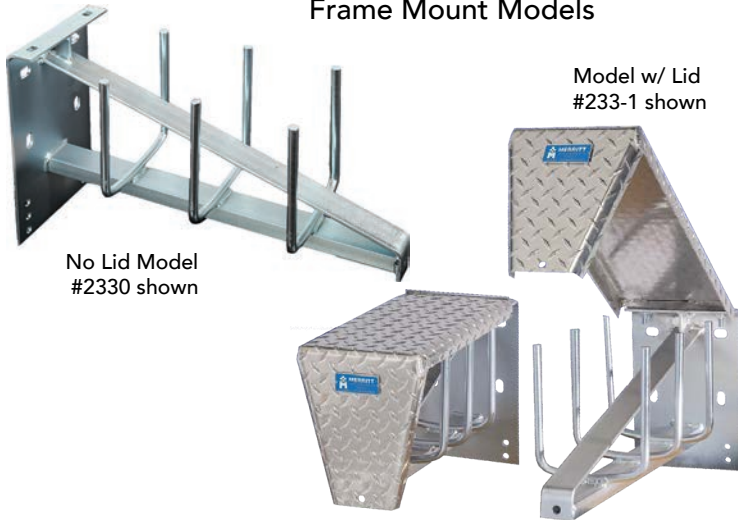
#1631





Organized Chain Storage

Frame Mount Models

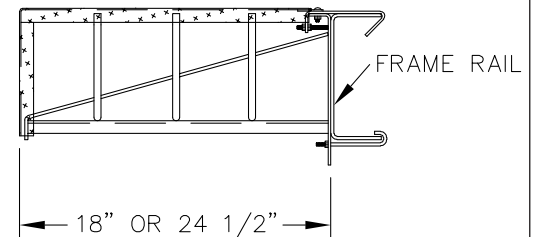


FRAME MOUNT

PART#	DESCRIPTION & DIMENSIONS	WT.
384-1	18" Chain Carrier w/Lid, 300 lb. capacity	22
233-1	24" Chain Carrier w/Lid, 300 lb. capacity	25
119	"No Drill" Mounting Kit (Fits 233 & 384)	4
385-1	18" Chain Carrier with 18" Removable Lid	22
234-1	24" Chain Carrier with 24" Removable Lid	22
3840	18" Chain Carrier No Lid	22
2330	24" Chain Carrier No Lid	22

- Frame Mount option with lockable lid for security.
- Strong design to store up to 300 lbs of chains.
- 24" for open frames, 18" for frames with fairing packages.
- Models with lid, without lid and with pull off lid available.

NO DRILL MOUNT



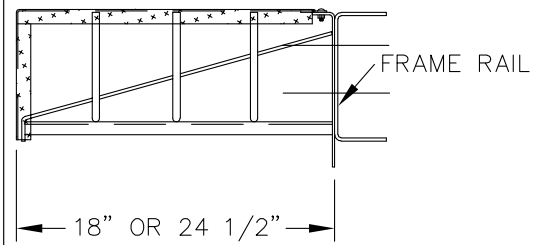
E-Z HOOK

PART#	DESCRIPTION & DIMENSIONS	WT.
3548	90 Degree Hook, 11" x 5 13/16"	4
3549	Flat Hook	4

- Two models of hook.
- Mounts using (2) 1/2" grade 5 or better bolts.
- Sold in 2, 3, or 4 packs.



DRILLED FRAME MOUNT



Models and/or Specifications Subject to Change Without Notice.



ELLSWORTH

A John M. Ellsworth Company

John M. Ellsworth Co., Inc.

P.O. Box 240072
8700 West Bradley Road
Milwaukee, WI 53224

800-333-3331 **PHONE**
info@jmesales.com **E-MAIL**
www.JMESales.com **WEB**