

## CubeTainer Stackable Tanks - Gravity Feed System

### Assembly Instructions

1. Screw threaded end of each pipe leg into couplers on the under-side of stand base.



2. Attach drip tray holder to front legs of stand. Leave ample space for your container below the drain valve.



3. Place drip tray insert pans w/screen into the drip tray holder spaces.



## CubeTainer Stackable Tanks - Gravity Feed System

4. Attach elbow kit(s) to front lip of the stand base, using 1/2" wrench. Repeat as necessary.

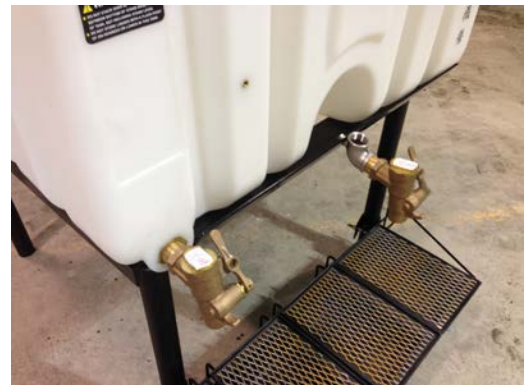


5. Stack all tanks vertically on stand. Tanks will interlock snugly, resisting any pressure front-to-back, or side-to-side.



6. **NOTE: Openings on drain port and elbow kits are 1" NPT. All threaded fittings must be coated with sufficient pipe thread sealant to prevent leakage. Snyder recommends Rector Seal #5 for all applications.**

Install valve directly into bottom tank drain port. Install additional valves into elbow kits on stand.



## CubeTainer Stackable Tanks - Gravity Feed System

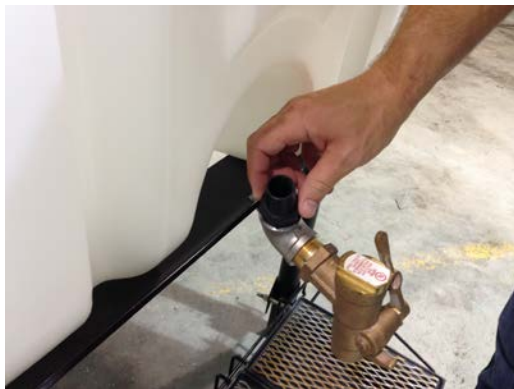
7. Install poly elbow(s) into stacked tank drain port(s). Angle poly elbows at a 5 o'clock position, aiming to its corresponding stand elbow kit. Repeat as necessary.

**NOTE:** Sufficiently coat all threaded fittings with pipe thread sealant to prevent leakage.



8. Install poly union(s) into stand elbow kit(s). The stand elbow kits are naturally angled at an 11 o'clock position. This allows a naturally straight path for the poly tubing to follow, thus preventing potential kink. Repeat as necessary.

**NOTE:** Sufficiently coat all threaded fittings with pipe thread sealant to prevent leakage.



9. Cut to length and attach clear poly tubing to barbed ends of the poly elbow(s) and poly union(s). Snyder recommends using a hose clamp on each end to secure each connection.



## CubeTainer Stackable Tanks - Gravity Feed System

10. Fill each tank. Be sure to double check each fitting for leaks. Snyder is not responsible for fluid loss or clean-up costs.

