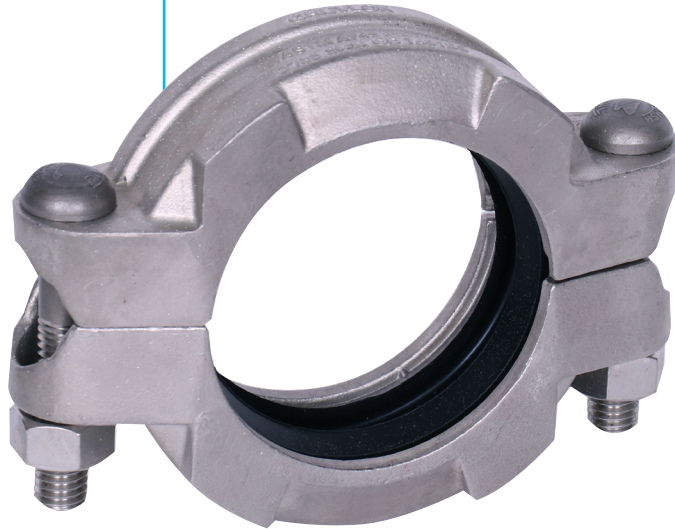


Stainless Steel Rigid Coupling Fig. 7401SS



The Figure 7401SS Rigid Coupling is a Stainless Steel coupling made of ASTM A-743 / A743M cast stainless steel which is the cast equivalent to 316 Stainless Steel. It is designed for installation on grooved Stainless Steel Schedules 10 and 40 pipe and grooved fittings. The stainless steel material is suitable for a variety of aggressive corrosive environments. The Figure 7401SS provides a rigid joint connection by firmly gripping along the circumference of the pipe grooves. It is capable of pressures up to 750 psi (41.4 bar) depending on pipe size and wall thickness.

Material Specifications

Stainless Steel Bolts

Stainless steel bolts are metric track head bolts conforming to ASTM A 193M Class 2, Type 316 Grade B8M.

Stainless Steel Nuts

Class 2 stainless steel nuts are heavy hex nuts conforming to ASTM A 194M, Type 316, Grade 8M.

Stainless Steel Housing

Type 316L, ASTM A 743/A 743M – Standard specification for castings, iron–chromium, iron–chromium–nickel, corrosion resistant; for general application Grade CR-8M.

Tensile strength, minimum 70,000 psi (4826.3 bar). Yield strength, minimum 30,000 psi (2068.4 bar). Elongation in 2" (50mm) minimum 30%.

Material Specifications (cont.)

Gaskets: Materials

Properties as designated in accordance with ASTM D 2000.

Grade "EP" EPDM (Green and Red color code) –40°F to 250°F (Service Temperature Range) (–40°C to 121°C). Recommended for water service, diluted acids, alkaline solutions, oil-free air and many other chemical services.

NOT FOR USE IN PETROLEUM APPLICATIONS. For hot water applications the use of Gruvlok Extreme Temperature lubricant is recommended.

Grade "T" Nitrile (Orange color code) –20°F to 180°F (Service Temperature Range) (–29°C to 82°C). Recommended for petroleum applications, air with oil vapors and vegetable and mineral oils.

NOT FOR USE IN HOT WATER OR HOT AIR.

Grade "O" Fluoro-Elastomer (Blue color code)

20°F to 300°F (Service Temperature Range) (–7°C to 149°C). Recommended for high temperature resistance to oxidizing acids, petroleum oils, hydraulic fluids, halogenated hydrocarbons and lubricants.

Gasket Type

Standard C Style (1¼" – 12")

Flush Gap (1¼" – 12")

Lubrication

Standard Gruvlok

Gruvlok Xtreme™

(Do Not use with Grade "L")



PROJECT INFORMATION	APPROVAL STAMP
Project:	Approved
Address:	Approved as noted
Contractor:	Not approved
Engineer:	Remarks:
Submittal Date:	
Notes 1:	
Notes 2:	

Stainless Steel Rigid Coupling Fig. 7401SS

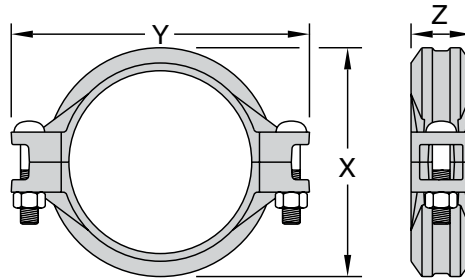


Fig. 7401SS Stainless Steel Rigid Coupling

Nominal Size	O.D.	Max. Working Pressure [†]	Max. End Load [†]	Max. End Gap*‡	Coupling Dimensions			Qty.	Coupling Bolts	Approx. Wt. Ea.
					X	Y	Z		Size	
In./DN(mm)	In./mm	PSI/bar	Lbs./kN	In./mm	In./mm	In./mm	In./mm	In./mm	Lbs./kg	
1¼ 32	1.660 42.4	750 51.7	1.623 7.22	0.06 1.5	3.02 76.7	4.38 111.3	1.81 46.0	2	¾ x 2¼ M10 x 57	2.0 0.9
1½ 40	1.900 48.3	750 51.7	2.127 9.46	0.08 2.0	3.14 79.7	4.62 117.3	1.81 46.0	2	¾ x 2¼ M10 x 57	2.1 0.9
2 50	2.375 60.3	750 51.7	3.323 14.78	0.13 3.3	3.63 92.2	5.12 130.0	1.88 47.8	2	¾ x 2¼ M10 x 57	2.5 1.1
2½ 65	2.875 73.0	600 41.4	3.895 17.3	0.13 3.3	4.28 108.7	5.70 144.8	1.88 47.8	2	¾ x 2¼ M10 x 57	3.2 1.5
3 80	3.500 88.9	600 41.4	5.772 25.7	0.13 3.3	4.90 111.7	6.50 165.1	1.88 47.8	2	½ x 3 M12 x 76	4.3 1.9
4 100	4.500 114.3	600 41.4	9.542 42.4	0.19 4.8	6.08 154.4	7.82 198.6	1.97 44.9	2	½ x 3 M12 x 76	5.7 2.6
5 125	5.563 141.3	600 41.4	14.583 64.9	0.19 4.8	7.20 182.8	9.71 246.6	2.04 51.8	2	⅝ x 3¼ M16 x 83	8.2 3.7
6 150	6.625 168.3	600 41.4	20.682 92.0	0.19 4.8	8.27 210.1	10.88 276.3	2.13 54.1	2	⅝ x 3¼ M16 x 83	9.2 4.2
8 200	8.625 219.1	600 41.4	35.054 156	0.19 4.8	10.51 266.9	13.56 344.4	2.62 66.5	2	¾ x 4¾ M20 x 121	19.4 8.8
10 250	10.750 273.0	600 41.4	54.455 242	0.13 3.3	12.97 329.4	16.40 416.6	2.62 66.5	2	1 x 6½ M24 x 165	32.2 14.6
12 300	12.750 323.9	600 41.4	76.603 340	0.13 3.3	15.42 391.7	18.84 478.5	2.62 66.5	2	1 x 6½ M24 x 165	42.2 19.1

Note:

* Maximum available gap between pipe ends. Minimum gap = 0.

† Maximum Pressure and End Load are total from all loads based on schedule 40 stainless steel pipe. Pressure ratings and end loads may differ for other pipe materials and/or wall thicknesses. Contact an ASC Engineered Solutions Sales Representative for details.

‡ Max End Gap and Deflection is for cut grooved standard weight stainless steel pipe. Values for roll grooved pipe will be half that of cut grooved.



John M. Ellsworth Co., Inc.

P.O. Box 240072
8700 West Bradley Road
Milwaukee, WI 53224

800-333-3331 **PHONE**

info@jmesales.com **E-MAIL**
www.JMESales.com **WEB**