

# Lead-Free Brass Gate Valve, Sweat Series 8502L

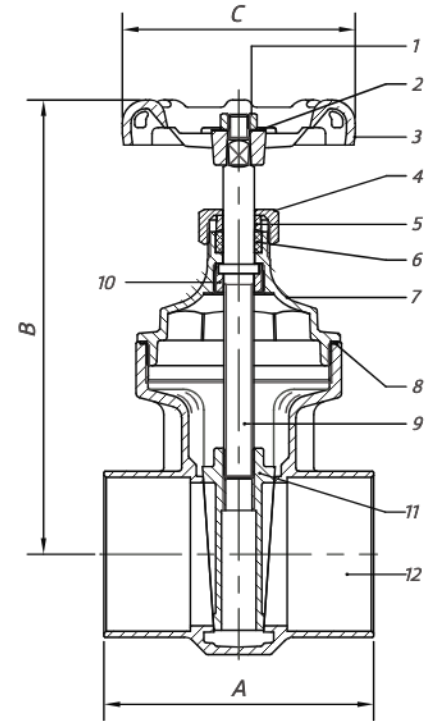


## Design Features

- California AB1953 lead-free approved
- Meets federal Safe Water Drinking Water Act, lead-free requirement
- 200 lb. WOG / 125 lb. WSP
- Full port (¼" - 3")
- Cast brass
- Non-rising brass stem
- ANSI/NSF 61.8 approved
- ISO 9001:2008 manufacturer

## Parts & Materials

No.	Part	Material
1	Nut	Forged Steel ASTM-AISI-1010
2	Name Plate	Aluminium ASTM B-209, Alloy 1100
3	Hand-Wheel	Cast Iron ASTM A-48, Class No. 35
4	Stem	Brass B16 C36000
5	Packing Nut	Brass B16 C36000 (¼"-1")
6	Packing Nut	Cast Brass ASTM B-584, C85700 (1-½" -4")
7	Gland Follower	Brass ASTM B16, C36000
8	Packing	Graphite
9	Bonnet	Cast Brass ASTM B-584, C89550
10	Stem Lock Nut	Brass ASTM B-16, C36000
11	Disc	Cast Brass ASTM B-584, C89550
12	Body	Cast Brass ASTM B-584, C89550



## Dimensions

Size	Part Number	Weight	A	B	C
In		Lb	In	In	In
¾	01718502EL	0.5	1.69	2.91	2.09
½	01718502GL	0.6	1.69	2.91	2.09
¾	01718502IL	0.8	2.32	3.31	2.13
1	01718502KL	1.1	2.72	3.90	2.48
1-¼	01718502LL	1.8	2.94	4.61	2.72
1-½	01718502ML	2.2	3.33	5.08	3.15
2	01718502NL	3.3	3.98	5.99	3.53