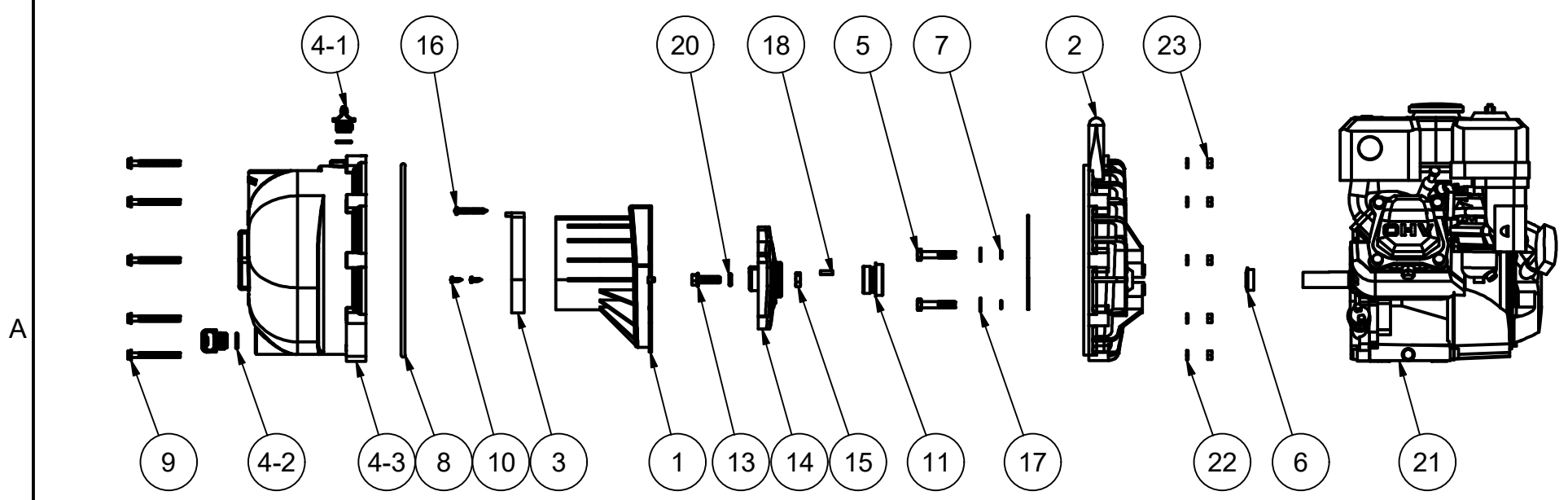



| PARTS LIST | | | |
|------------|-----|-------------|---------------------------------------|
| ITEM | QTY | PART NUMBER | DESCRIPTION |
| 1 | 1 | 12702A | 2" POLY PUMP VOLUTE |
| 2 | 1 | 12703A | POLY PUMP REAR BRACKET |
| 3 | 1 | 12705 | PUMP CHECKVALVE, EPDM |
| 4 | 1 | 12712AP | 2" POLY PUMP BODY |
| 4-1 | 2 | 12777 | 1/2" DRAIN PLUG |
| 4-2 | 2 | UV15163 | #114 O'RING, EPDM |
| 4-3 | 1 | X12712A | 2" POLY PUMP BODY |
| 5 | 4 | 12715A | 5/16-24 X 1 3/4" HHCS WITH TORQ-PATCH |
| 6 | 1 | 12716 | PUMP SLINGER |
| 7 | 4 | 12717 | AS568A -011 O-RING, EPDM |
| 8 | 1 | 12719A | AS568A -375 O-RING, EPDM, BLACK |
| 9 | 10 | 12720 | 1/4-20 X 2 1/2" SL IND HWHS |
| 10 | 2 | 12725 | #6 X 1/2" PPH SMS |
| 11 | 1 | 12733 | MECHANICAL SEAL ASSY |
| 12 | 1 | 12754 | O'RING SEGMENT |
| 13 | 1 | 12765A | 5/16-24 X 1 1/8" HFS |
| 14 | 1 | 12772 | IMPELLER |
| 15 | 1 | 12775A | 7/16-14 HEX NUT |
| 16 | 1 | 12900 | #10 X 1 1/2" PPH SMS |
| 17 | 4 | 12901 | 5/16" FLAT WASHER |
| 18 | 1 | 12902A | 3/16" SQ. X 5/8" KEY |
| 19 | 1 | 12910 | DECAL (N/S) |
| 20 | 1 | A204 | AS568A -204 O-RING, EPDM, BLACK |
| 21 | 1 | E6H | 6.5 HP HONDA |
| 22 | 10 | V07018 | 1/4" LOCKWASHER |
| 23 | 10 | V07019 | 1/4-20 HEX NUT |



THIS DRAWING AND ALL INFORMATION CONTAINED THEREON ARE THE EXCLUSIVE PROPERTY OF BANJO CORPORATION.

UNLESS SPECIFICALLY NOTED, THIS DRAWING AND ITEMS SHOWN ON THIS DRAWING ARE SUBJECT TO CHANGE AT ANY TIME.



BANJO CORPORATION

150 BANJO DRIVE, CRAWFORDSVILLE, IN 47933
 WEB SITE: WWW.BANJOCORP.COM
 E-MAIL: BANJOSALES@IDEXCORP.COM

| | |
|-------------|------------------------------|
| DESCRIPTION | 2" POLY PUMP W/ 6.5 HP HONDA |
| PART NUMBER | 200PH6 |