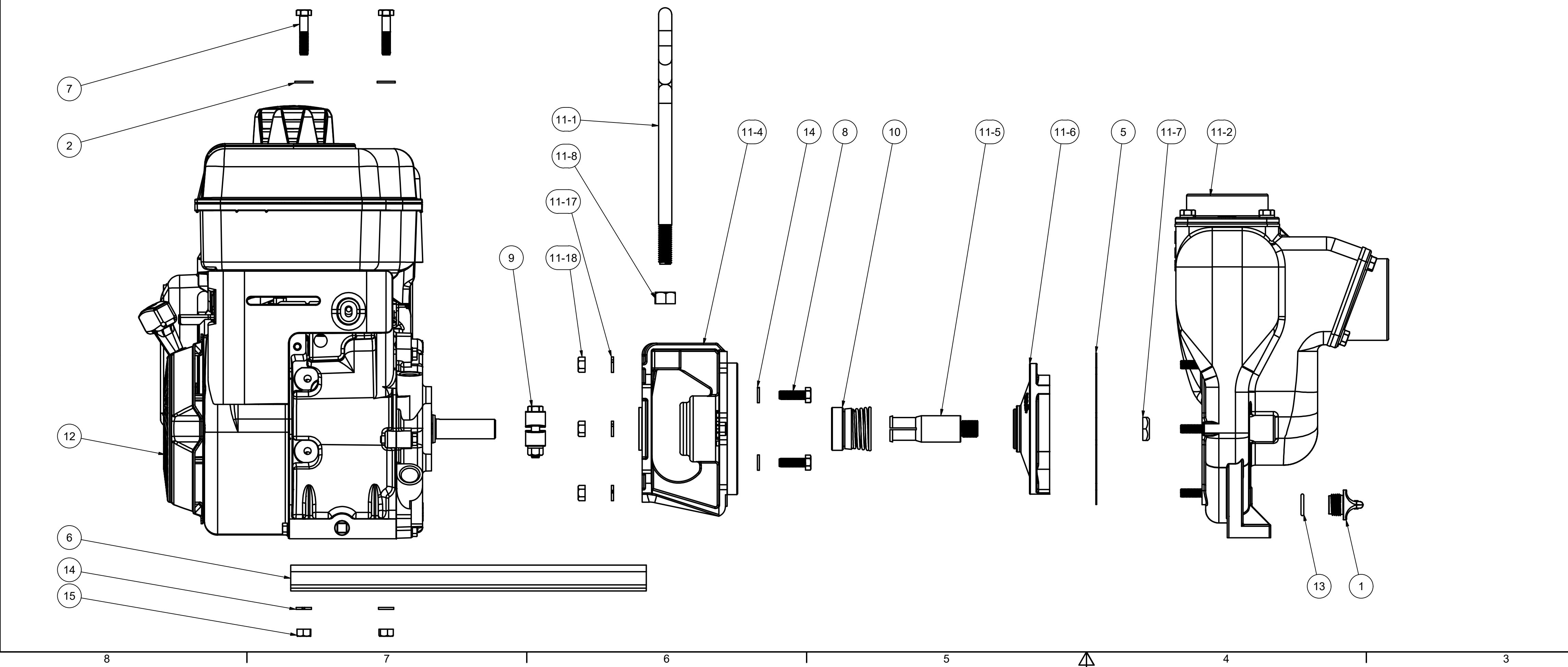


PARTS LIST			
ITEM	QTY	PART NUMBER	DESCRIPTION
1	1	12777	1/2" DRAIN PLUG
2	4	12901	5/16" FLAT WASHER
3	1	12910	DECAL (N/S)
5	1	17018	PUMP ADAPTER GASKET
6	1	17033	Z-RAIL (PAIR)
7	4	17034	5/16-18 X 1-1/2" HHCS
8	4	17040	5/16-24 X 1" HHCS
9	1	17123	CI PUMP KEYED CLAMP
10	1	17135	MECH. SEAL ASSY.
12	1	E6.5PRO	6.5 HP B&S ENGINE
13	1	UV15163	AS568A -114 O-RING, EPDM, BROWN
11	1	200XPOIL	2" CI PUMP SUB-ASSY
11-1	1	15022	2" PUMP HANDLE
11-2	1	17000	2" OUTLET FLANGE
11-3	1	17002	2" INLET FLANGE
11-4	1	17004	GAS ENGINE ADAPTER
11-5	1	17006	ADAPTER SHAFT
11-6	1	17008	PUMP IMPELLER
11-7	1	17009B	5/8-18 IMPELLER NUT
11-8	1	17010	1/2-13 HEX NUT
11-9	1	17011	WEAR PLATE
11-10	1	17013	OUTLET FLANGE GASKET
11-11	1	17016	CI PUMP CHECK VALVE ASSY
11-12	1	17018	PUMP ADAPTER GASKET (N/S)
11-13	8	17019	5/16-18 X 3/4" HHCS
11-14	1	17026	2" PUMP HOUSING
11-15	6	17042	5/16-18 X 1 1/4" STUD
11-16	2	17130	5/16-18 X 1" FHSCS
11-17	14	V10118	5/16" LOCKWASHER
11-18	6	V10119	5/16" HEX NUT
14	8	V10118	5/16" LOCKWASHER
15	4	V10119	5/16" HEX NUT

SECTION B-B
SCALE 1:2



THIS DRAWING AND ALL INFORMATION CONTAINED THEREON ARE THE EXCLUSIVE PROPERTY OF BANJO CORPORATION.

UNLESS SPECIFICALLY NOTED, THIS DRAWING AND ITEMS SHOWN ON THIS DRAWING ARE SUBJECT TO CHANGE AT ANY TIME.

BANJO CORPORATION
150 BANJO DRIVE, CRAWFORDSVILLE, IN 47933
WEB SITE: WWW.BANJO.CORP.COM
E-MAIL: BANJOSALES@DEXCORP.COM

DESCRIPTION
2" CI PUMP WITH 6.5HP INTEK PRO

PART NUMBER
200PI6PRO