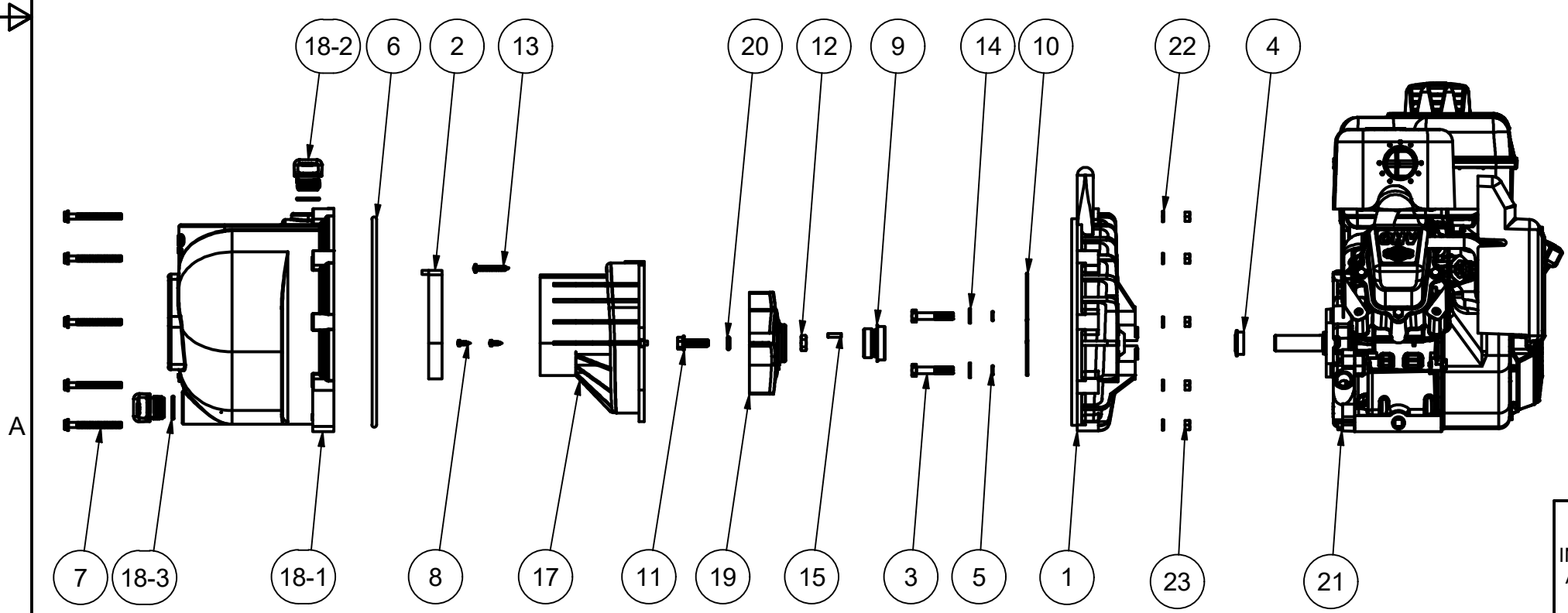



PARTS LIST			
ITEM	QTY	PART NUMBER	DESCRIPTION
1	1	12703A	POLY PUMP REAR BRACKET
2	1	12705	PUMP CHECKVALVE, EPDM
3	4	12715A	5/16-24 X 1 3/4" HHCS WITH TORQ-PATCH
4	1	12716	PUMP SLINGER
5	4	12717	AS568A -011 O-RING, EPDM
6	1	12719A	AS568A -375 O-RING, EPDM, BLACK
7	10	12720	1/4-20 X 2 1/2" SL IND HWHS
8	2	12725	#6 X 1/2" PPH SMS
9	1	12733	MECHANICAL SEAL ASSY
10	1	12754	O'RING SEGMENT
11	1	12765A	5/16-24 X 1 1/8" HFS
12	1	12775A	7/16-14 HEX NUT
13	1	12900	#10 X 1 1/2" PPH SMS
14	4	12901	5/16" FLAT WASHER
15	1	12902A	3/16" SQ. X 5/8" KEY
16	1	12910	DECAL (N/S)
17	1	13702	3" POLY PUMP VOLUTE
18	1	13712	3" POLY PUMP BODY ASSY.
18-1	1	13712X	3" PUMP BODY
18-2	2	13777	3/4" DRAIN PLUG
18-3	2	13778	AS568A -119 O-RING, EPDM, BLACK
19	1	13771	3" POLY PUMP TRIMMED IMPELLER
20	1	A204	AS568A -204 O-RING, EPDM, BLACK
21	1	E6.5PRO	6.5 HP B&S ENGINE
22	10	V07018	1/4" LOCKWASHER
23	10	V07019	1/4-20 HEX NUT



THIS DRAWING AND ALL INFORMATION CONTAINED THEREON ARE THE EXCLUSIVE PROPERTY OF BANJO CORPORATION.

UNLESS SPECIFICALLY NOTED, THIS DRAWING AND ITEMS SHOWN ON THIS DRAWING ARE SUBJECT TO CHANGE AT ANY TIME.



BANJO CORPORATION

150 BANJO DRIVE, CRAWFORDSVILLE, IN 47933
 WEB SITE: WWW.BANJOCORP.COM
 E-MAIL: BANJOSALES@IDEXCORP.COM

DESCRIPTION	3" POLY PUMP W/ 6.5 HP B&S PRO
PART NUMBER	300P6PRO