

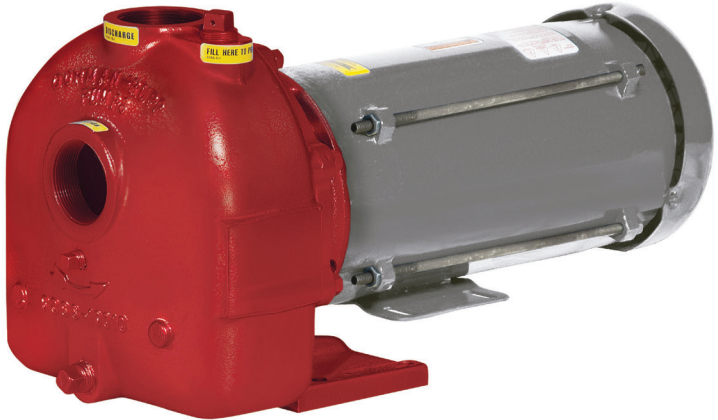
FILL-RITE®

A GORMAN-RUPP COMPANY

PetroleumPro

TECHNICAL SPECIFICATIONS

FR-02K3XP20-60HZ1P

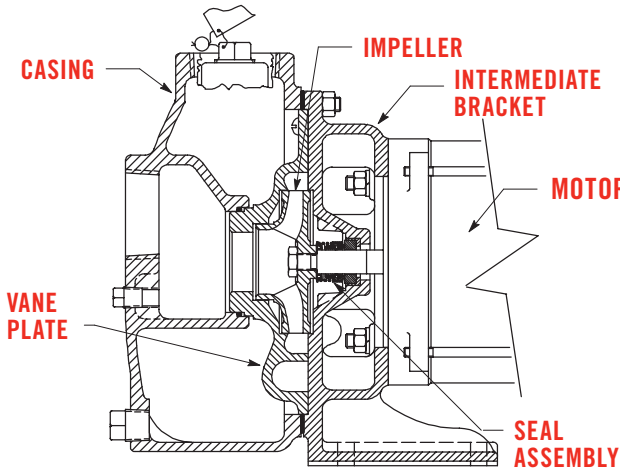


Self Priming Centrifugal Pump

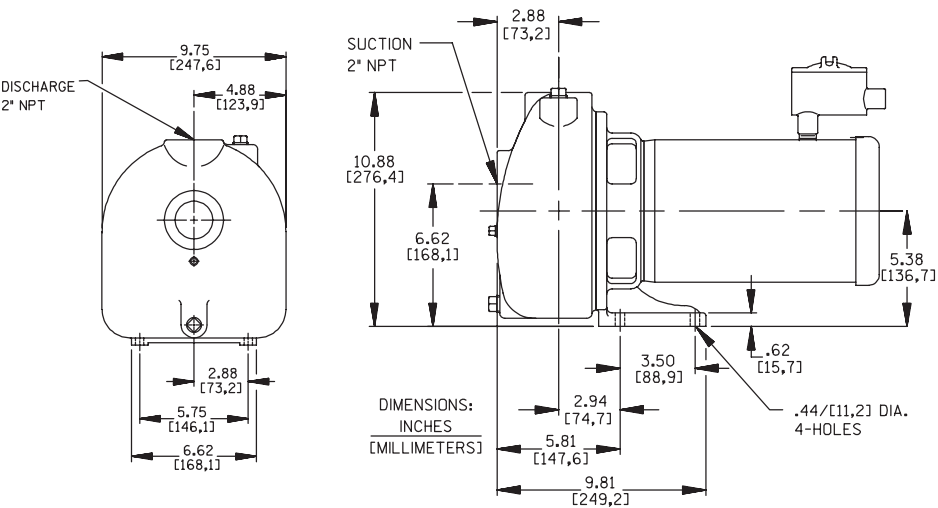
Size	2" x 2" (51 mm x 51 mm) NPT - Female
Casing	Gray Iron 30 Maximum Operating Pressure 46 PSI (317 kPa)
Enclosed Type, Four Vane Impeller	Copper Alloy C83600 Handles 3/8" (9,5 mm) Diameter Spherical Solids
Replaceable Vane Plate	Gray Iron 30
Intermediate	Gray Iron 30
Seal	Type 21, Mechanical, Self-Lubricated Carbon Rotating Face Ni-Resist Stationary Face Fluorocarbon Elastomers (DuPont Viton® or Equivalent) Stainless Steel 18-8 Cage and Spring Maximum Temperature of Liquid Pumped, 160°F (71°C)
Gasket	NC710 Cork with Nitrile Binder
O-Ring	Fluorocarbon (DuPont Viton® or Equivalent)
Hardware	Standard Plated Steel
Optional Equipment	All Iron Construction Wheel Kit with Semi-Pneumatic Tires

Motor

Type	Explosion Proof
Horsepower	2
Frame Size	56
Voltage	Single Phase 115/230 Volts, 60 Hertz. Approx. F.L. Amps: 23.0/11.5
RPM	3450



DIMENSIONAL INFORMATION



Approximate Dimension & Weight

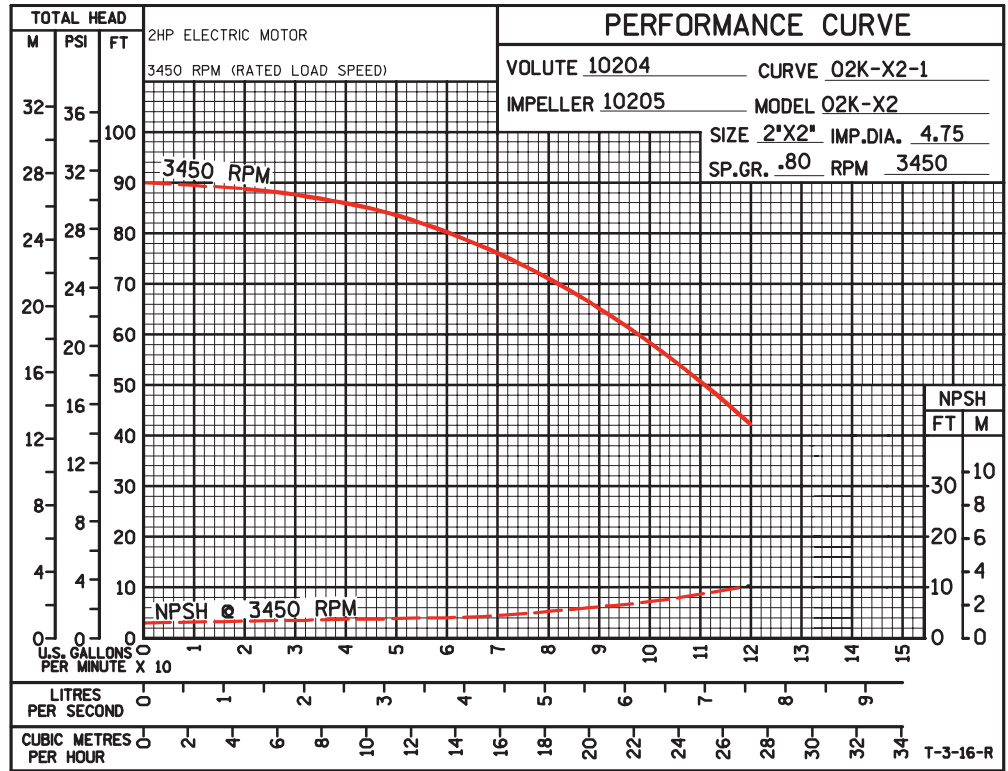
NET Weight	107 LBS. (49 KG.)
Shipping Weight	120 LBS. (54 KG.)
Export Crate	3.6 CU. FT. (.10 CU. M.)

Consult Factory for High Altitude Applications Requiring a Motor With a Breather.

CURVE DATA

60 HERTZ

Performance based on petroleum



50 HERTZ

Performance based on petroleum

NOT AVAILABLE