

HIGH-TEMP BREW METER

FLOMEC[®]

FLOMEC[®]

**THE PERFECT
BREW METER**



BREW A CONSISTENT BATCH EVERY TIME

G2 SERIES FEATURING HIGH-TEMPERATURE RISER AND TRI-CLAMP FITTINGS

Make your perfect recipe every time! The FLOMEC G2 Brew Meter features a high-temperature riser and Tri-Clamp fittings. It's highly dependable and affordable, making it a great choice for many brewing applications!



Measure the volume of wort transferring to the fermenter

FEATURES & BENEFITS

- High accuracy meter with Q9, battery-powered, LCD display
- Optional output module and remote display kit to suit your application needs
- Internal turbine assembly is field replaceable to reduce cost and downtime
- 11 pre-programmed engineering units plus 1 custom option: gallon, litre, imperial gallon, quart, ounce, acre-foot, millilitre, cubic foot, cubic centimetre, cubic metre, barrel
- Tri-clamp, high temperature, sanitary fittings:
 - ¾ inch fitting for ½ inch meter
 - 1 inch fitting for ¾ inch meter
 - 1½ inch fitting for 1 inch meter
 - 2 inch fitting for 1½ inch meter
 - 2½ inch fitting for 2 inch meter
- For applications requiring 3A Food & Beverage certifications, see the FLOMEC 3A turbine meter (GSCPS model).
- 2 year battery life

Wichita · Sydney

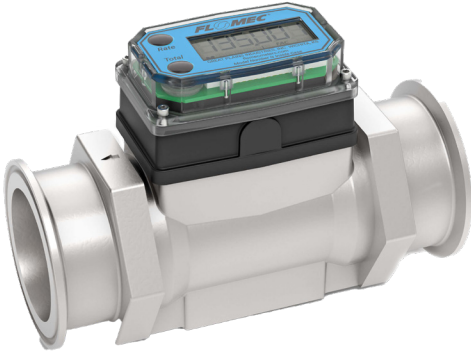
GREAT PLAINS INDUSTRIES



HIGH-TEMP BREW METER



G2 SERIES BREW METER



Pipe Size:	Part Number:
1/2 Inch	G2S05TH9GMX
3/4 Inch	G2S07TH9GMX
1 Inch	G2S10TH9GMX
1½ Inch	G2S15TH9GMX
2 Inch	G2S20TH9GMX

SPECIFICATIONS

Flow Range:	1-200 GPM (3.8-760 L/min)
Accuracy of Reading:	+/- 0.75% to +/- 1.5%
Type:	Turbine
Working Pressure:	Limited by fitting, clamp size, & temperature
Max Working Temperature:	0°F to 210°F (-18°C to 99°C)*
Approvals:	CE, NEMA 4, IP65

*See Ambient and Fluid Temperature Limits graph on the operating temperature range. Shown on High-Temp Brew Meter data sheet.

SEND FLOW RATE DATA TO A PLC WITH A 4-20MA OUTPUT MODULE



Our 4-20mA module makes a great addition when automated control systems include equipment such as PLCs or chart recorders. This module's default output is a 4-20mA signal which is directly proportional to the published flow range of the meter. With some simple parameter changes, you can scale output to represent whatever flow range is suitable for your application. The kit comes with circuit assembly, enclosure, screws, and 10 feet of cable. This module requires an input power of 8-32 volts DC (24 VDC is recommended).

GSCPS SERIES METER / 3A STANDARDS



Pipe Size:	Part Number:
1 Inch	GSCPS-100-RT14
1½ Inch	GSCPS-150-RT14
2 Inch	GSCPS-200-RT14

GSCPS shown here with RT14, battery powered local digital display, rate and totals. 4-20mA and Scaled Pulse output available when externally powered.

SPECIFICATIONS

Flow Range:	6.7-330 GPM (25-1250 L/min)
Accuracy of Reading:	+/- 0.5%
Type:	Turbine
Working Pressure:	Limited by fitting, clamp size, & temperature
Max Working Temperature:	-100°F to 225°F (-74°C to 107°C); For SIP (up to 1 hour) 285°F (140°C)
Approvals:	CIP/SIP, 3A 28-04

The G Series High Precision Meter is the most accurate of all the FLOMEC® Turbine Meters. This meter meets the strict 3-A Sanitary Standards using the "Third Party Verification" (TPV) program. Our methods of design, construction, and traceability of components have been reviewed and approved. The internals of this meter are machined or polished to meet 3-A self-draining and cleaning requirements (Ra 32).

