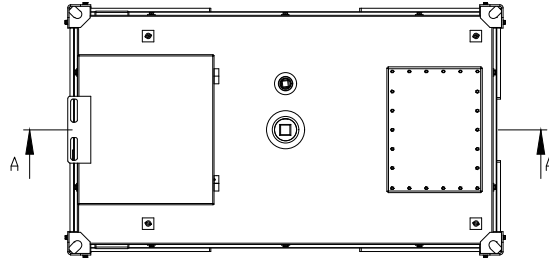
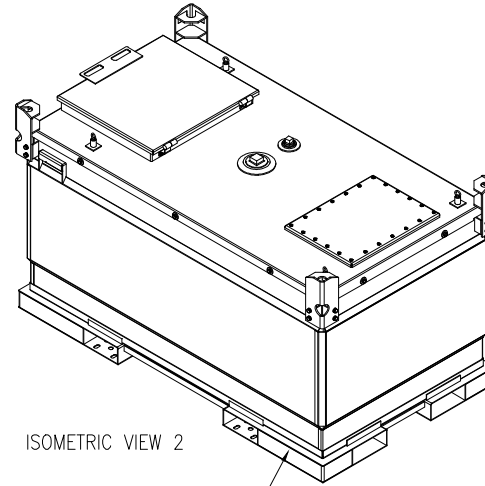


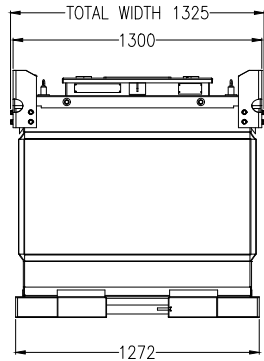
SECTION A-A



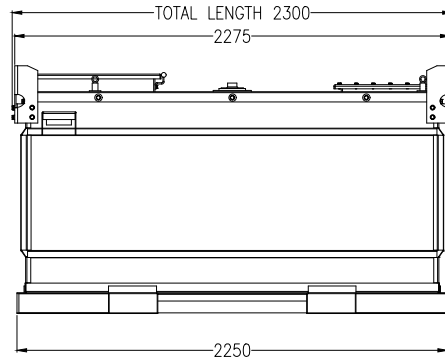
PLAN VIEW



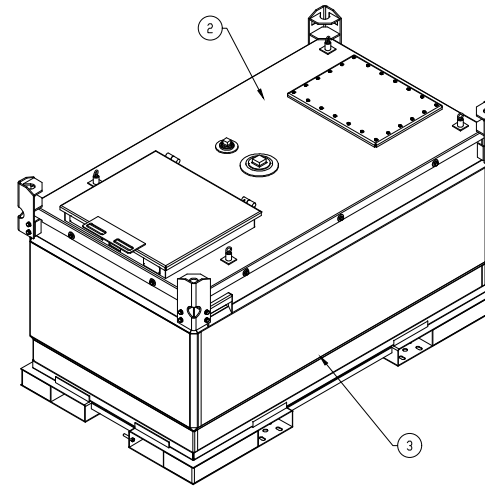
ISOMETRIC VIEW 2



FRONT ELEVATION



SIDE ELEVATION



ISOMETRIC VIEW 1

GENERAL NOTES

- ALL DIMENSIONS ARE IN MM UNLESS OTHERWISE SPECIFIED.
- UNLESS OTHERWISE INDICATED, NOZZLE PROJECTIONS ARE MEASURED FROM TANK CENTERLINE.
- ALL STEEL MATERIAL ARE ASTM A36/EN 10025 S235/IS2062/Q235 BEFORE SHIPPING, THE TANK MUST BE INTERNALLY CLEANED, DRAINED & DRIED.
- UNLESS OTHERWISE SPECIFIED, THE FILLET WELD THROAT SIZE FOR NON PRESSURE PARTS TO BE 0.7 TIMES OF SMALLER THICKNESS
- ALL SHARP CORNERS SHOULD BE ROUNDED OR CHAMFERED.

DESIGN FEATURES

- BUNDED FUEL TANK, COMPLIANT WITH POLLUTION PREVENTION GUIDELINES (PPG2).
- FORKLIFT POCKETS ARE TO ALLOW EASY AND SAFE HANDLING. DESIGNED TO STACK INSIDE SHIPPING CONTAINERS AND ACROSS TRUCK BEDS PROVIDING ECONOMICAL TRANSPORTATION
- UNIQUE CORNERS FOR EXTRA STRENGTH AND HOSE OPENING IN FRONT TO ALLOW TANK TO BE USED WHEN LOCKED.
- PROVISION FOR PUMPS AS WELL AS FEED AND RETURN CONNECTIONS FOR GENERATOR USE WITH PROVISIONS FOR ADDITIONAL FEED RETURNS FOR MULTIPLE USE.
- BUNDED OUTER TANK CAPACITY 110% OF VOLUME AND REMOVABLE INNER TANK FOR MAINTENANCE/ACCESS.
- SECURE EFFICIENT DESIGN: EASILY STACKED 2 HIGH WHEN FULL, 3 HIGH WHEN EMPTY.
- SPACE EFFICIENT DESIGN: EASILY STACKED 2 HIGH WHEN FULL, 3 HIGH WHEN EMPTY.
- PAINTED WITH POWDER COATED PAINT SYSTEM.
- PRIMARY TANK INNER SURFACE IS SPRAYED WITH OIL.

DESIGN DATA

DESIGN STANDARD	UL142, ULC 5601, UN31A/Y
DESIGN PRESSURE	ATMOSPHERIC (14.5 PSI)
DESIGN TEMP.	50° C.
CAPACITY	1980L (DIESEL)
SAFE FILL VOLUME	1880L (DIESEL)
MATERIAL OF CONSTRUCTION	ASTM A36/EN 10025 S235/IS2062/Q235
TYPE	RECTANGULAR, DOUBLE WALL, BUNDED, COMPARTMENT
PRIMARY TANK SIZE	1799 mm(L) x 1082 mm (W) x 1039mm(H)
EXTERNAL TANK SIZE	2300 mm (L) x 1325 mm(W) x 1295 mm (H)
BAFFLE THICKNESS	2MM
PRIMARY WALL THICKNESS	3MM ALL OVER
EXTERNAL WALL THICKNESS	4MM BASE; 3MM SIDE WALLS
PRESSURE TEST	PRIMARY TANK-BY WATER, 3 PSI/21 KPA FOR 20 MINUTE EXTERNAL TANK FILLED WITH WATER FOR 20 MINUTE

WEIGHTS IN Kg.

EMPTY CONDITION	HYDROTEST CONDITION	OPERATING CONDITION
731	2672	2331

REV.	DESCRIPTION	DATE	CHECKED	APPROVED	REMARKS
1	REISSUED FOR MANUFACTURING	11.03.2022	11.03.2022	11.03.2022	
0	ISSUED FOR MANUFACTURING	14.12.2021	14.12.2021	14.12.2021	

THIS DRAWING AND THE COPYRIGHT THEREIN IS THE PROPERTY OF DYNAMIC GLOBAL. IT MAY NOT BE COPIED WHOLLY OR IN PART AND IT MAY NOT BE LOANED OR DISCLOSED TO OTHERS WITHOUT THE PRIOR WRITTEN CONSENT OF DYNAMIC GLOBAL



NOTE:
Unless Otherwise Specified:
Dimensions are in mm
TOLERANCES:
≤100 ± 2
≤1000 ± 3
ANG ± 0.5°

PAINT SPECIFICATION	GALVANIZING SPECIFICATION
BLASTING TO SA2.5 PHOSPHORIZING LIQUID RINSE OF ALL SURFACES. POLYURETHANE PLASTIC POWDER COATING THICKNESS IS 80-120 DFT. PRE-HEATING TEMPERATURE 200-220°C. AFTER COATING BAKE AT 200°C FOR 30 MINUTES.	ALL HOT DIPPED GALVANIZING PARTS SHOULD HAVE MIN 45 MICRONS OF THICKNESS APPLIED

ASSEMBLY PART LIST					
ITEM No.	Description	Sheet No.	Material	Quantity per assy	Weight, Kgs
1	LID-PRIMARY TANK	02 of 05	A36/S235	1	234+127
2	LID ASSEMBLY	03 of 05	A36/S235	1	127
3	EXTERNAL TANK WITH BASE FRAME	04 of 05	A36/S235	1	299+71
4	BASE FRAME	05 of 05	A36/S235	1	71
					TOTAL WEIGHT - 731 Kgs

PROJECT TITLE:	ACE CUBE PROFESSIONAL-2000L		
SHEET TITLE:	ACE CUBE PROFESSIONAL 2000L TECHNICAL GA		
PREPARED: W.T	DATE:	14-12-2021	
CHECKED: M.L	CUSTOMER:	NA	
APPROVED: DM	SCALE:	NTS	
PROJECT NO.: ACP-2000L	REV.:	01	
DWG. NO.: DG-ACP-2000L-GA	SHEET NO.:	01 of 05	A4