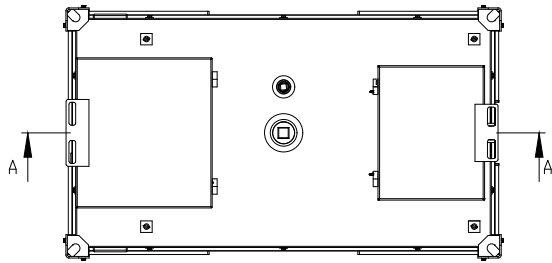
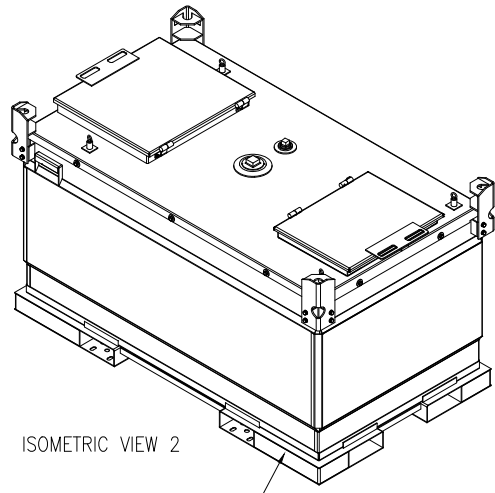


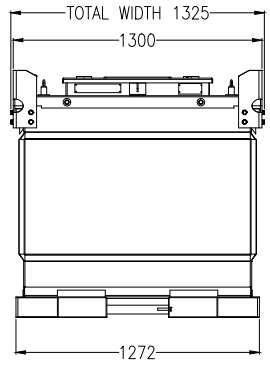
SECTION A-A



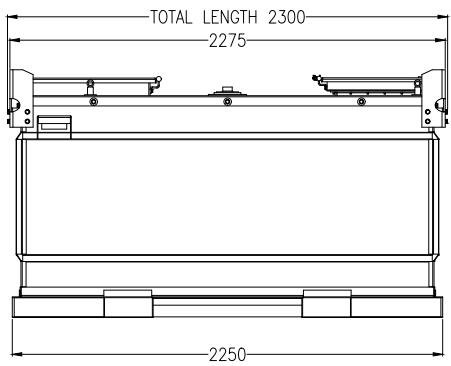
PLAN VIEW



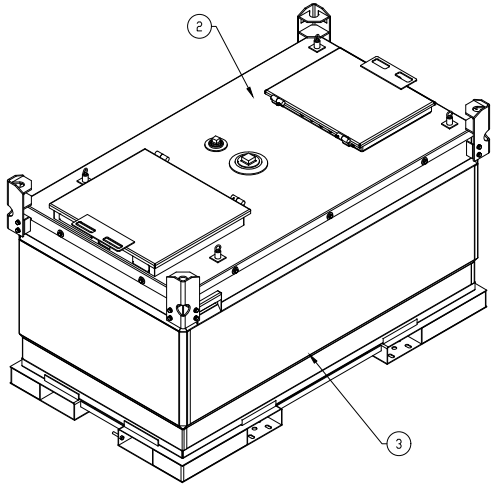
ISOMETRIC VIEW 2



FRONT ELEVATION



SIDE ELEVATION



ISOMETRIC VIEW 1

- GENERAL NOTES**
- ALL DIMENSIONS ARE IN MM UNLESS OTHERWISE SPECIFIED.
  - UNLESS OTHERWISE INDICATED, NOZZLE PROJECTIONS ARE MEASURED FROM TANK CENTERLINE.
  - ALL STEEL MATERIAL ARE ASTM A36/EN 10025 S235/S2062/Q235 BEFORE SHIPPING, THE TANK MUST BE INTERNALLY CLEANED, DRAINED & DRIED.
  - UNLESS OTHERWISE SPECIFIED, THE FILLET WELD THROAT SIZE FOR NON PRESSURE PARTS TO BE 0.7 TIMES OF SMALLER THICKNESS
  - ALL SHARP CORNERS SHOULD BE ROUNDED OR CHAMFERED.
- DESIGN FEATURES**
- BUNDED FUEL TANK, COMPLIANT WITH POLLUTION PREVENTION GUIDELINES (PPG2).
  - FORKLIFT POCKETS ARE TO ALLOW EASY AND SAFE HANDLING.
  - DESIGNED TO STACK INSIDE SHIPPING CONTAINERS AND ACROSS TRUCK BEDS PROVIDING ECONOMICAL TRANSPORTATION
  - UNIQUE CORNERS FOR EXTRA STRENGTH AND HOSE OPENING IN FRONT TO ALLOW TANK TO BE USED WHEN LOCKED.
  - PROVISION FOR PUMPS AS WELL AS FEED AND RETURN CONNECTIONS FOR GENERATOR USE WITH PROVISIONS FOR ADDITIONAL FEED RETURNS FOR MULTIPLE USE.
  - BUNDED OUTER TANK CAPACITY 110% OF VOLUME AND REMOVABLE INNER TANK FOR MAINTENANCE/ACCESS.
  - SECURE EFFICIENT DESIGN: EASILY STACKED 2 HIGH WHEN FULL, 3 HIGH WHEN EMPTY.
  - SPACE EFFICIENT DESIGN: EASILY STACKED 2 HIGH WHEN FULL, 3 HIGH WHEN EMPTY.
  - PAINTED WITH POWDER COATED PAINT SYSTEM.
  - PRIMARY TANK INNER SURFACE IS SPRAYED WITH OIL.

**DESIGN DATA**

|                              |  |
|------------------------------|--|
| DESIGN STANDARD              | UL142, ULC 9601, UN31A/Y   |
| DESIGN PRESSURE              | ATMOSPHERIC (14.5 PSI)   |
| DESIGN TEMP.                 | 50° C.   |
| CAPACITY                     | 1746L (DIESEL) , 140L(Ad-Blue)   |
| SAFE FILL VOLUME             | 1658L (DIESEL) , 133L(Ad-Blue)   |
| MATERIAL OF CONSTRUCTION     | ASTM A36/EN 10025 S235/S2062/Q235  |
| TYPE                         | RECTANGULAR, DOUBLE WALL, BUNDED, COMPARTMENT  |
| PRIMARY TANK SIZE            | 1799 mm(L) x 1082 mm (W) x 1039mm(H)   |
| EXTERNAL TANK SIZE           | 2300 mm (L) x 1325 mm(W) x1295 mm (H)  |
| BAFFLE THICKNESS             | 2MM  |
| PRIMARY WALL THICKNESS       | 3MM ALL OVER   |
| EXTERNAL WALL THICKNESS      | 4MM BASE;<br>3MM SIDE WALLS  |
| PRESSURE TEST                | PRIMARY TANK-BY WATER, 3 PSI/21 KPA FOR 20 MINUTE<br>EXTERNAL TANK FILLED WITH WATER FOR 20 MINUTE |
| CS SUMP TANK CAPACITY/WEIGHT | 232L / 93 KGS (4MM THK ALL OVER)   |
| PLASTIC TANK CAPACITY/WEIGHT | 140L / 26 KGS (10MM THK ALL OVER)  |

**WEIGHTS IN Kg.**

| EMPTY CONDITION | HYDROTEST CONDITION | OPERATING CONDITION |
|-----------------|---------------------|---------------------|
| 839             | 2687                | 2382                |

| REV. | DESCRIPTION              | DATE       | CHECKED    | APPROVED   | REMARKS |
|------|--------------------------|------------|------------|------------|---------|
| 0    | ISSUED FOR MANUFACTURING | 18.02.2022 | 18.02.2022 | 18.02.2022 |         |

THIS DRAWING AND THE COPYRIGHT THEREIN IS THE PROPERTY OF DYMAC GLOBAL. IT MAY NOT BE COPIED WHOLLY OR IN PART AND IT MAY NOT BE LOANED OR DISCLOSED TO OTHERS WITHOUT THE PRIOR WRITTEN CONSENT OF DYMAC GLOBAL



| PAINT SPECIFICATION  | GALVANIZING SPECIFICATION  |
|--|--|
| BLASTING TO SA2.5<br>PHOSPHORIZING LIQUID RINSE OF ALL SURFACES.<br>POLYURETHANE PLASTIC POWDER COATING<br>THICKNESS IS 80-120 DFT.<br>PRE-HEATING TEMPERATURE 200-220°C.<br>AFTER COATING BAKE AT 200°C FOR 30 MINUTES. | ALL HOT DIPPED GALVANIZING PARTS SHOULD HAVE MIN 45 MICRONS OF THICKNESS APPLIED |

**ASSEMBLY PART LIST**

| ITEM No.                      | Description                   | Sheet No. | Material | Quantity per assy | Weight, Kgs |
|-------------------------------|-------------------------------|-----------|----------|-------------------|-------------|
| 1                             | LID-PRIMARY TANK              | 02 of 05  | A36/S235 | 1                 | 353 + 116   |
| 2                             | LID ASSEMBLY                  | 03 of 05  | A36/S235 | 1                 | 116         |
| 3                             | EXTERNAL TANK WITH BASE FRAME | 04 of 05  | A36/S235 | 1                 | 299+71      |
| 4                             | BASE FRAME                    | 05 of 05  | A36/S235 | 1                 | 71          |
| <b>TOTAL WEIGHT - 839 kg.</b> |                               |           |          |                   |             |

**PROJECT TITLE: ACE CUBE PROFESSIONAL DUAL FLUID -1750/140L**

**SHEET TITLE: ACE CUBE PROFESSIONAL DUAL FLUID -1750/140L TECHNICAL GA**

|                                  |                     |
|----------------------------------|---------------------|
| PREPARED: W.T                    | DATE: 18-02-2022    |
| CHECKED: M.L                     | CUSTOMER: NA        |
| APPROVED: DM                     | SCALE: NTS          |
| PROJECT NO.: ACP-DF-1750/140L    | REV.: 00            |
| DWG. NO.: DG-ACP-DF-1750/140L-GA | SHEET NO.: 01 of 05 |