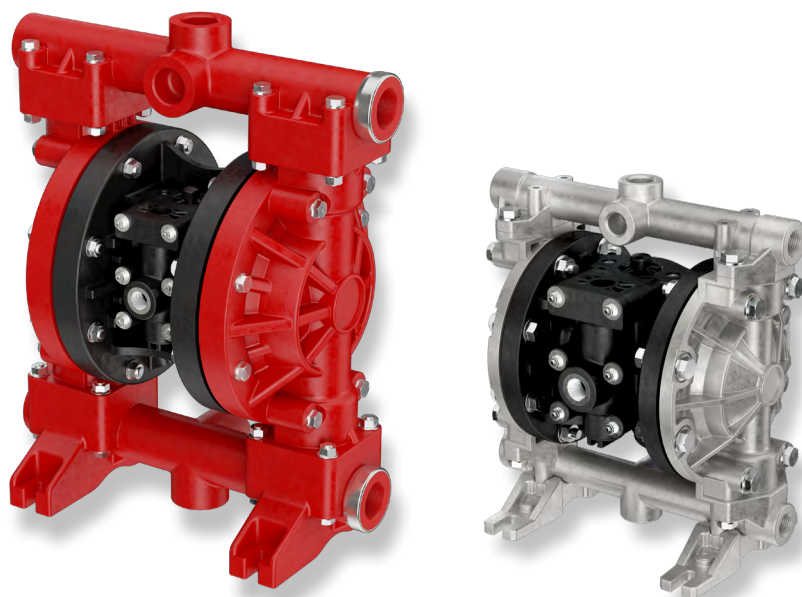




SINCE 1953 THE GLOBAL PLAYER  
IN FLUID HANDLING

# NEW RANGE PRO ONE PUMPS

## Reliability and High Performance



**PIUSI S.p.A.** - 46029 Suzzara (Mantova)  
Italy tel.+39 0376 534561  
e-mail: [piusi@piusi.com](mailto:piusi@piusi.com)  
[www.piusi.com](http://www.piusi.com)

# Uncompromising performance

Innovation and the latest models introduce advanced technical improvements:

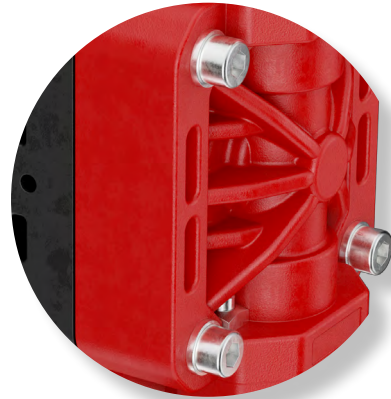
## **EASY REPAIRABILITY**

The new air distributor design allows for simplified disassembly, providing direct external access for quicker and more efficient maintenance.



## **HIGH-PERFORMANCE MATERIALS**

The plastic pumps are made of a reinforced technopolymer, ensuring greater resistance, reliability, and long-lasting durability.



## **LOWER CONSUMPTION**

A new anti-stall system with an unbalanced valve ensures continuous operation without interruptions. Reduced air consumption, improved efficiency, and low noise levels.

## **EXTENDED DURABILITY FOR INTENSIVE USE**

The Heavy Duty design ensures greater longevity of wear-prone components, reducing maintenance needs and operational costs.

## *Get to know PCHEM*

*PCHEM S.R.L. is a company within the PIUSI GROUP, offering innovative and high-quality solutions in the industrial pump sector and fluid management systems.*

*Born from PIUSI's industrial division— a global leader with over 70 years of experience in fluid handling— PCHEM stands out for its ability to integrate top-tier expertise and technologies.*

*This has been further strengthened by the acquisition of CAPITANIO AIRPUMPS, a company with over 45 years of specialization in manufacturing air-operated double diaphragm (AODD) and piston pumps. With this major achievement, our expertise has expanded to include a technologically advanced and innovative product range.*

*With an agile and highly specialized approach, PCHEM places customer satisfaction at the core of its business. We focus on delivering high-quality products and services, including tailored solutions to meet the specific needs of our clients.*




# DEF

## OLD versions

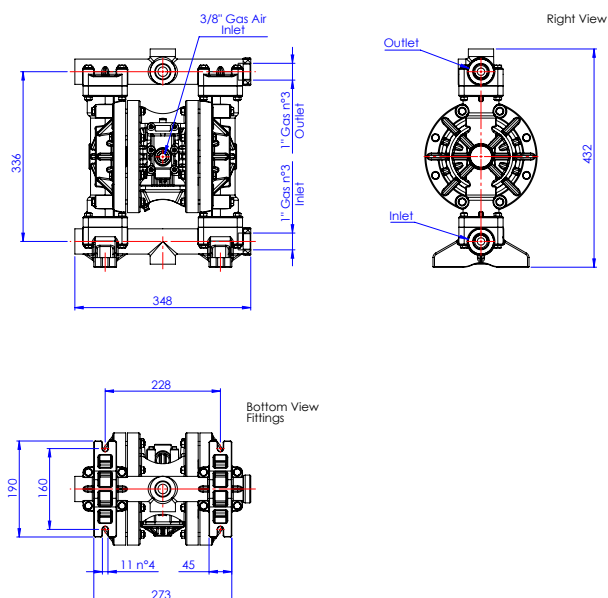
<b>MP140</b>		<b>MP190</b>	
<b>Old Part number</b> F00208P50		<b>Old Part number</b> F00208P60	
	Flow Rate: 26 GAL Max Suction Height: 20 ft Operating Pressure: 101 PSI Solids Passage: Ø 0.16" Inlet / Outlet: 1" NPT		Flow Rate: 40 - 58 GAL Max Suction Height: 20 ft Solids Passage: Ø 0.16" Inlet / Outlet: 1 1/4" NPT



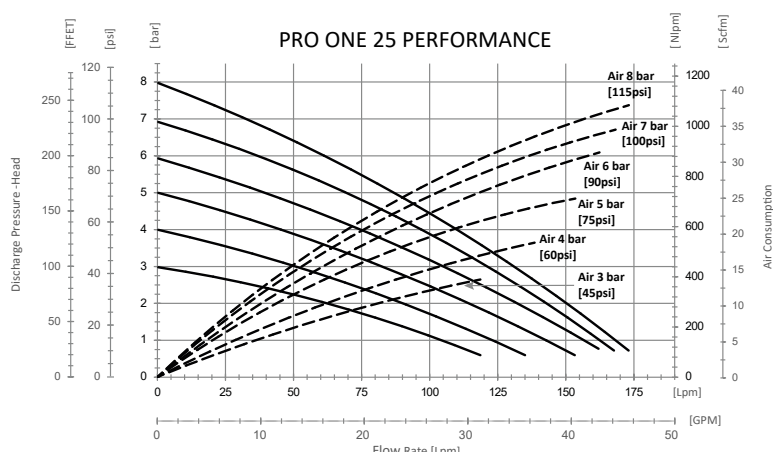
## NEW version

(EX) PRO ONE 25 - MP 160 L/MIN NPT		
<b>New Part number</b> F00808P30		
	<b>TECHNICAL DATA</b>  Flow Rate: 42 GAL Max Suction Height: 23 ft Air Operating Pressure: 115 PSI Solids Passage: Ø 0.20" Inlet / Outlet: 1" NPT	<b>DESCRIPTION</b>  Air-operated double diaphragm pump (AODD), self-priming and anti-stall. Robust design, built for durability and easy maintenance.

## OVERALL DIMENSIONS



## PERFORMANCE





# DEF

## (EX) PRO ONE 15 - MP 50 L/MIN NPT

**New Part number**  
F00808P10



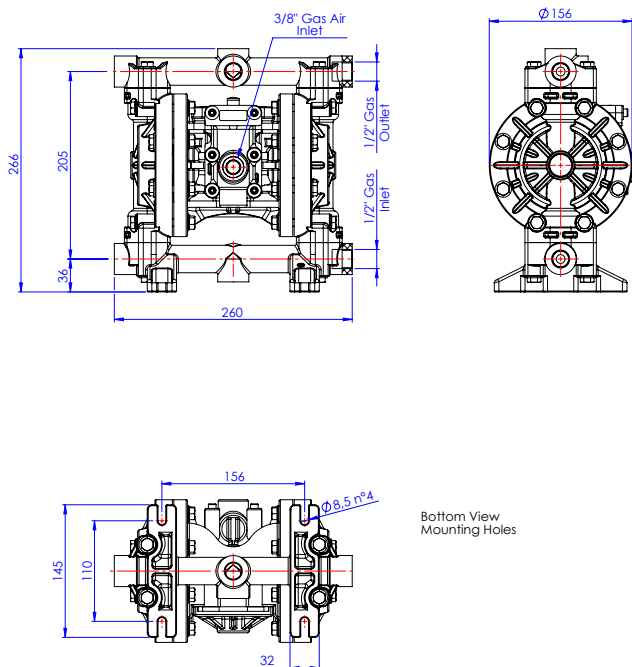
### TECHNICAL DATA

Flow Rate: 14 GAL  
Max Suction Height: 23 ft  
Air Operating Pressure: 115 PSI  
Solids Passage: Ø 0.15"  
Inlet / Outlet: 1/2" NPT

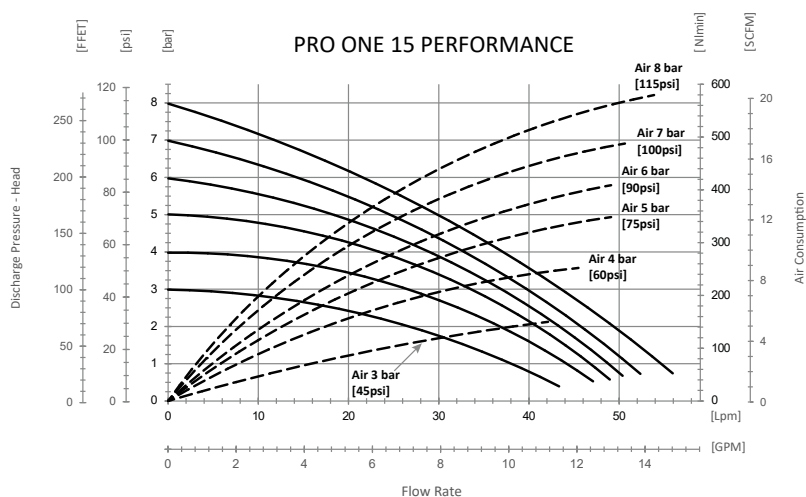
### DESCRIPTION

Air-operated double diaphragm pump (AODD), self-priming and anti-stall.  
Robust design, built for durability and easy maintenance.

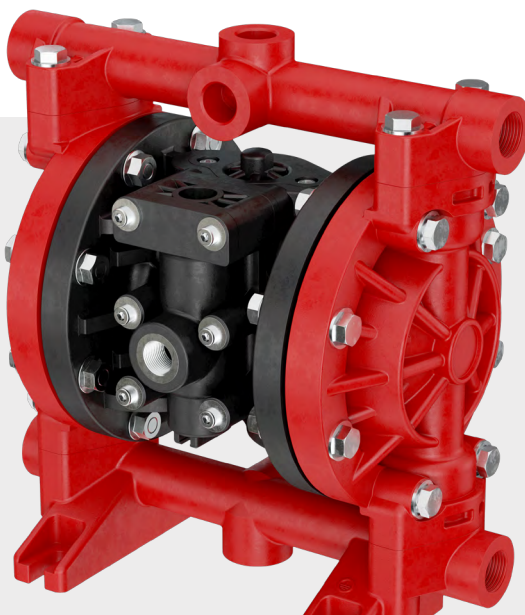
## OVERALL DIMENSIONS



## PERFORMANCE




**NEW**



# FUEL

# & LUBE

## OLD version

<b>MA130</b>	
<b>Old Part number</b> F00208A30	
	Flow Rate: 13 GAL Max Suction Height: 16.4 ft Operating Pressure: 100 PSI Solids Passage: Ø 0.15" Inlet / Outlet: 1/2" NPT

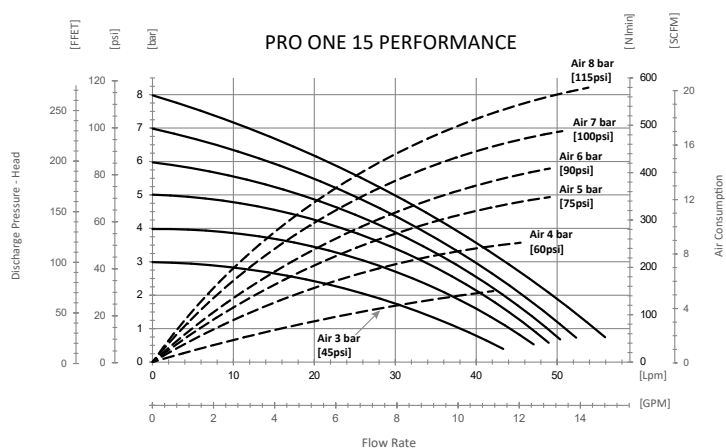
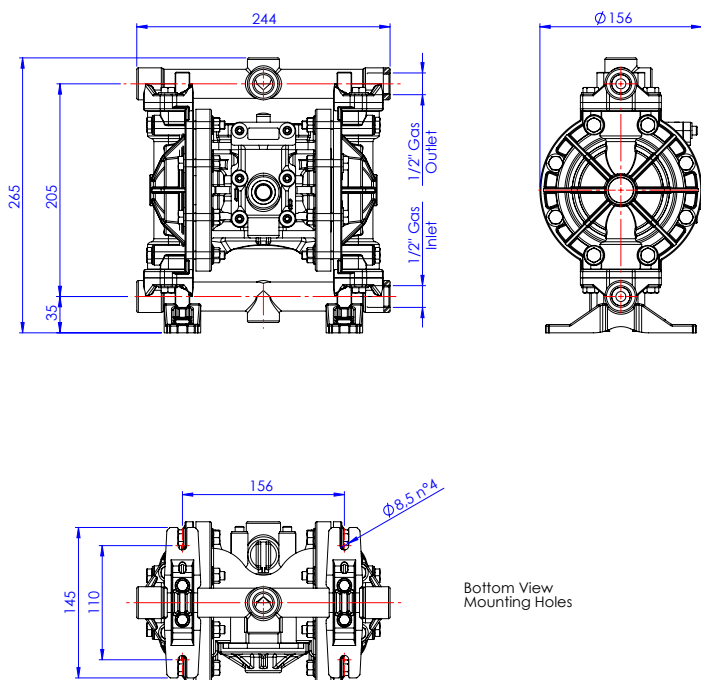
## NEW version



(EX) PRO ONE 15 - MA 50 L/MIN NPT		
<b>New Part number</b> F00808A10	<b>TECHNICAL DATA</b>	<b>DESCRIPTION</b>
	Flow Rate: 14 GAL Max Suction Height: 23 ft Air Operating Pressure: 115 PSI Solids Passage: Ø 0.09" Inlet / Outlet: 1/2" NPT	Air-operated double diaphragm pump (AODD), self-priming and anti-stall. Robust design, built for durability and easy maintenance.

## OVERALL DIMENSIONS

## PERFORMANCE



# FUEL

# & LUBE

## OLD version

### MA180

**Old Part number**  
F00208A40



Flow Rate: 40 GAL  
Max Suction Height: 16.4 ft  
Operating Pressure: 100 PSI  
Solids Passage: Ø 0.15"  
Inlet / Outlet: 1" NPT

## NEW version

### (EX) PRO ONE 25 - MA 160 L/MIN NPT

**New Part number**  
F00808A30



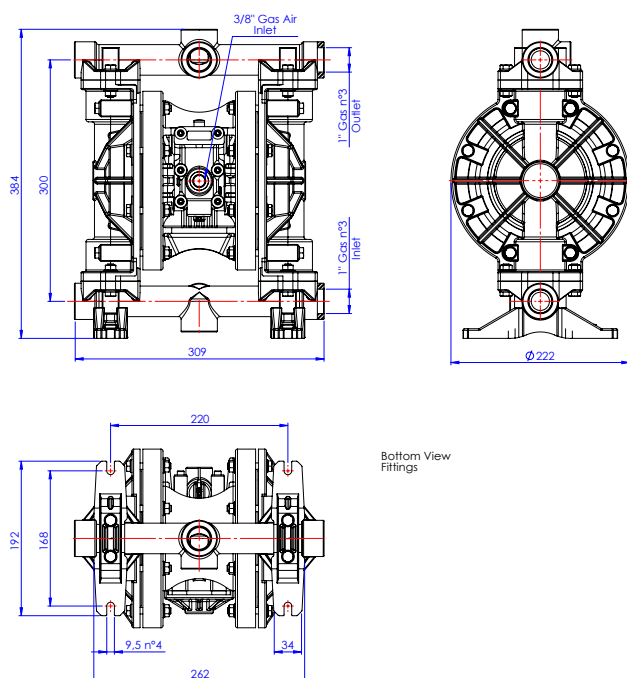
#### TECHNICAL DATA

Flow Rate: 42 GAL  
Max Suction Height: 23 ft  
Air Operating Pressure: 115 PSI  
Solids Passage: Ø 0.20"  
Inlet / Outlet: 1" NPT

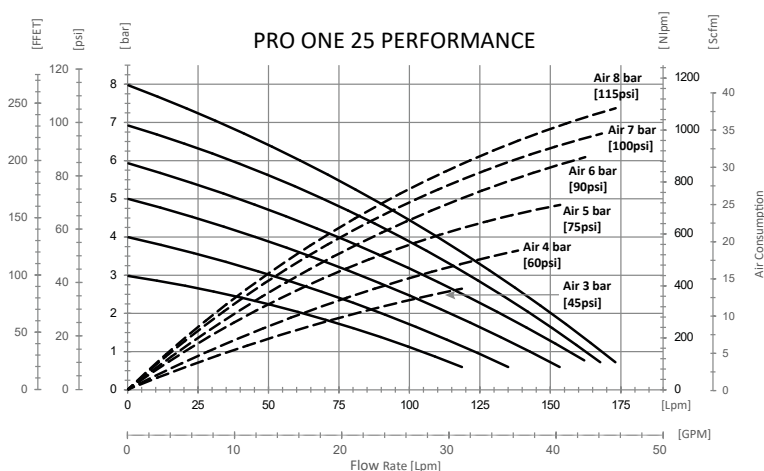
#### DESCRIPTION

Air-operated double diaphragm pump (AODD), self-priming and anti-stall.  
Robust design, built for durability and easy maintenance.

## OVERALL DIMENSIONS



## PERFORMANCE





NEW CODES

PART NUMBER	DESCRIPTION	FLOW RATE
F00808P30	(EX) PRO ONE 25 - MP 160 L/MIN NPT	42 GAL



FLUID TYPE	PUMP MATERIAL
AdBlue®, Antifreeze, Water, Windscreen	Reinforced PP

PART NUMBER	DESCRIPTION	FLOW RATE
F00808P10	(EX) PRO ONE 15 - MP 50 L/MIN NPT	14 GAL



FLUID TYPE	PUMP MATERIAL
AdBlue®, Antifreeze, Water, Windscreen	Reinforced PP

PART NUMBER	DESCRIPTION	FLOW RATE
F00808A10	(EX) PRO ONE 15 - MA 50 L/MIN NPT	14 GAL



FLUID TYPE	PUMP MATERIAL
Diesel, Kerosene, Oil	Aluminium

PART NUMBER	DESCRIPTION	FLOW RATE
F00808A30	(EX) PRO ONE 25 - MA 160 L/MIN NPT	42 GAL



FLUID TYPE	PUMP MATERIAL
Diesel, Kerosene, Oil	Aluminium





**PIUSI S.p.A.**

Headquarters  
46029 Suzzara (Mantova) Italy  
tel.+39 0376 534561  
e-mail: [piusi@piusi.com](mailto:piusi@piusi.com)  
[www.piusi.com](http://www.piusi.com)

**PIUSI USA, Inc.**

3901 Anglers Avenue Fort Lauderdale,  
FL 33312  
tel.: 954 584 1552  
e-mail: [piusiusa@piusi.com](mailto:piusiusa@piusi.com)  
[www.piusi.com](http://www.piusi.com)

