

SANITARY DIRECT MOUNT BALL VALVES

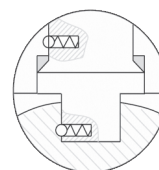
THE NEXT GENERATION BALL VALVES ARE LIVE LOADED WITH SELF-ADJUSTING PACKING AND A DESIGN THAT IS SPECIFICALLY MANUFACTURED FOR HIGH CYCLE APPLICATIONS. **TRU-FLO** PRODUCTS REDUCE THE WORRIES OF ROUTINE MAINTENANCE EXPENSES WHILE LOWERING ACTUATION COSTS BY ELIMINATING CUSTOM BRACKETS AND COUPLERS. DOUBLE O-RING PROTECTION PROVIDES ADDITIONAL DEFENSE AGAINST LEAKING THROUGH STEM AND LOWERS OPERATING TORQUE. STEM DESIGN AUTOMATICALLY ADJUSTS COMPRESSION OF THE SEAL TO COMPENSATE FOR WEAR, PRESSURE, AND TEMPERATURE.



Features & Specifications

- » ASTM 316/316L stainless steel
- » 3-PC body design facilitates inspection and easy inline repair
- » Full port flow to tube ID without tapering
- » Highly-polished 8-12 Ra ID
- » Live loaded, self-adjusting packing and Belleville washers provide better sealing and defense against leaking
- » 3-PC, v-ring stem packing for superior sealing and lower torque
- » Blowout-proof, bottom entry stem design and anti-static device
- » ANSI B16/B2/B18, MSS-SP82, NSF 61 AWWA
- » Using body cavity fillers meets FDA, USDA & 3A requirements
- » Designed for high cycle automated applications
- » Standard with Tri-Clamp® ends; other end configuration available
- » 100% tested and inspected prior to shipping
- » Full traceability of all components
- » SST x PTFE seats available for high temperature applications
- » Available in regular or cavity filled styles
- » Standard seats are TFM-1600
- » Cavity fillers are virgin PTFE-meets CFR 21
- » Cavity Filled Are suitable for up to 50% vacuum applications
- » ½"-2" have 4 bolts, 2½"-4" have 6 bolts, 6" and larger have 8 bolts

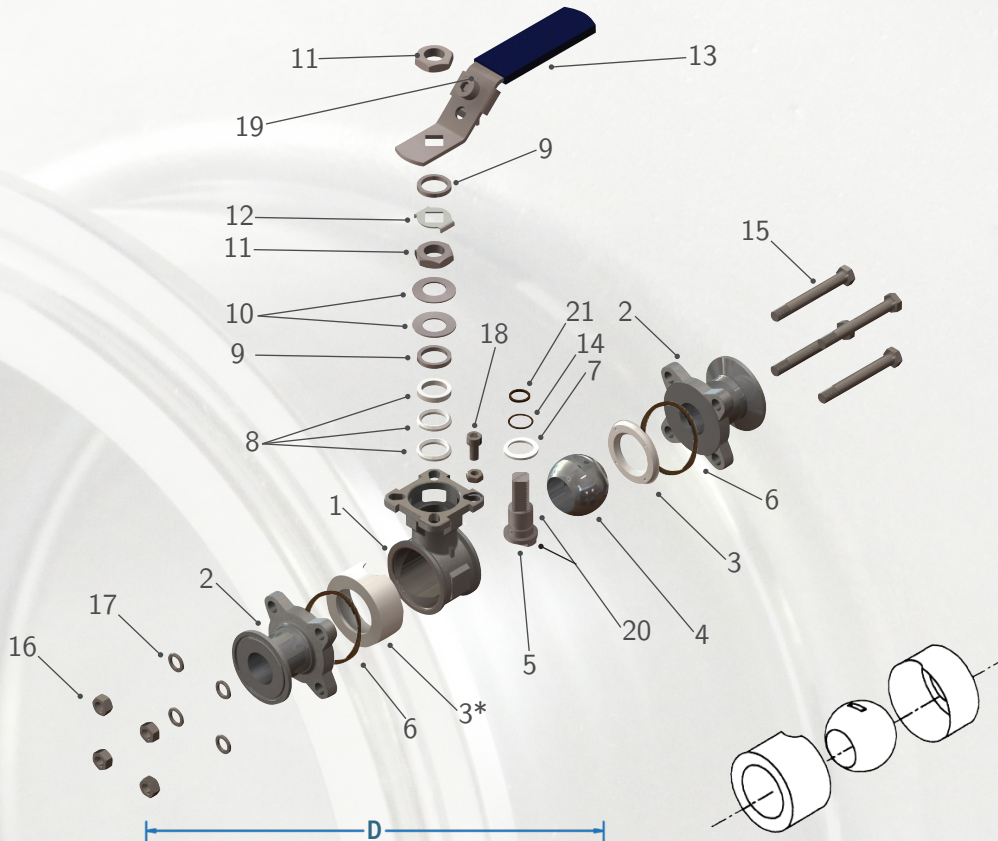
AVAILABLE IN STANDARD
OR CAVITY FILLED SEATS



Pyramidal Stem, Double Sealing & Anti-Static Device



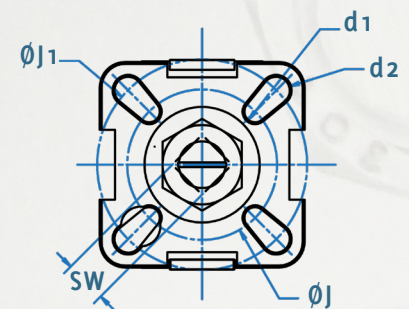
EA-33NF-SN



Item	Part (Qty)	Material
1	Body	CF8M/316
2	End Caps (2)	CF8M/316
3*	Seats (2)	PTFE
4	Ball	SUS 316
5	Stem	SUS 316
6	Body Seal (2)	PTFE
7	Stem Gasket	PTFE
8	Stem Seals (3)	PTFE
9	Gland Ring (2)	SUS 304
10	Belleville Spring Washer (2)	SUS 301
11	Lever Nut	SUS 304
12	Locking Tab	SUS 304
13	Handle	SUS 304
14	O-ring	VITON®
15	Bolts (4)	SUS 304
16	Bolts Nut (4)	SUS 304
17	Washer (4)	SUS 304
18	Stop Screw	SUS 304
19	Locking Device	SUS 304
20	Static Device (2)	SUS 316
21	O-ring	VITON®

*Option: Cavity Filled

Standard Grit	Ra		RMS		Class
	μin	μ	μin	μ	
240g	14-18	.34-.46	15-20	.38-.51	B
320g	8-10	.21-.25	9-11	.23-.28	A



Size	Body Bolts	A	B	C	D	E	G	H	L	J	J1	d1	d2	SW	ISO5211
½"	4	0.37	3.50	2.79	4.33	1.00	0.99	1.67	0.37	1.42	1.65	0.24	0.24	0.35	F03/F04
¾"	4	0.63	4.00	2.89	4.33	1.00	1.09	1.76	0.37	1.42	1.65	0.24	0.24	0.35	F03/F04
1"	4	0.87	4.50	3.31	5.32	1.98	1.30	2.13	0.39	1.65	1.97	0.24	0.28	0.43	F04/F05
1½"	4	1.37	5.50	4.31	6.50	1.98	1.94	2.89	0.58	1.97	2.76	0.28	0.35	0.55	F05/F07
2"	4	1.87	6.25	4.68	6.50	2.52	2.50	3.26	0.58	1.97	2.76	0.28	0.35	0.55	F05/F07
2½"	6	2.37	7.00	5.25	9.06	3.05	3.25	4.21	0.67	2.76	4.02	0.35	0.43	0.67	F07/F10
3"	6	2.88	9.00	6.30	11.81	3.58	3.8	4.62	0.67	2.76	4.02	0.35	0.43	0.67	F07/F10
4"	6	3.84	9.50	6.90	11.81	4.68	4.6	5.21	0.67	2.76	4.02	0.35	0.43	0.67	F07/F10
6"	8	5.78	15.50	8.51	19.68	6.57	7.42	8.50	1.06	4.02	4.92	0.47	0.55	1.06	F10/F12

