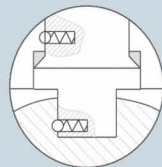


SANITARY DIRECT MOUNT BALL VALVES



Features & Specifications

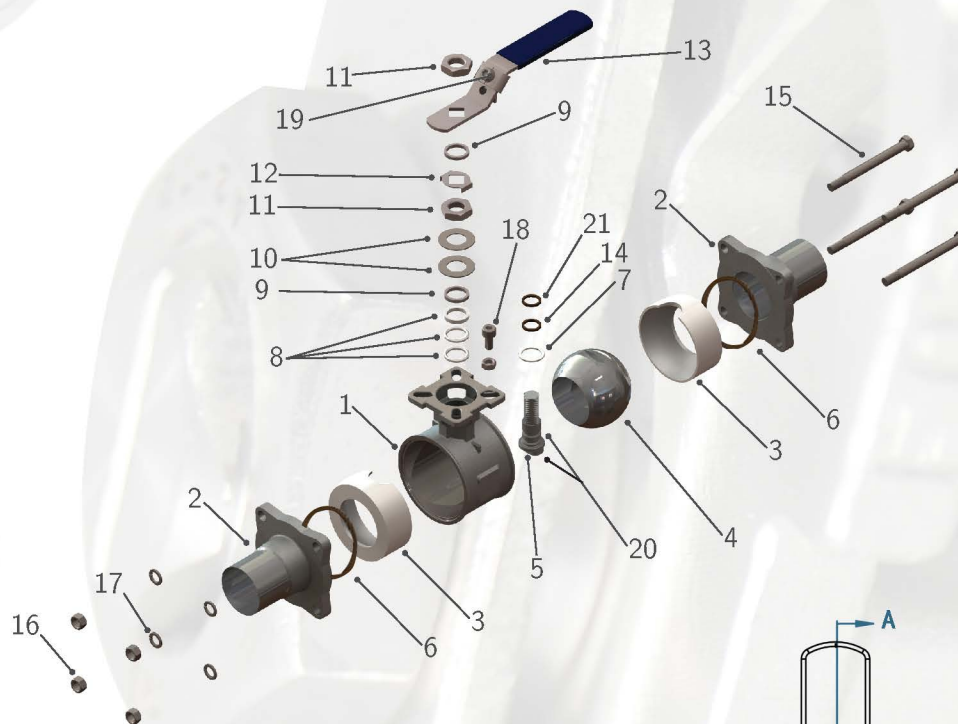
- » ASTM 316/316L stainless steel; 316L extended butt-weld ends allow inline welding without disassembly of valve and are suitable for orbital welding
- » 3-PC body design facilitates inspection and easy inline repair
- » Full port flow to tube ID without tapering
- » Highly polished 8-12 Ra ID
- » Live loaded, self-adjusting packing and Belleville washers provide better sealing and defense against leaking
- » 3-PC, v-ring stem packing for superior sealing and lower torque
- » Blowout-proof, bottom entry stem design and anti-static device
- » ANSI B16/B2/B18, MSS-SP82, NSF 61 AWWA
- » Using body cavity fillers meets FDA, USDA & 3A requirements
- » Designed for high cycle automated applications
- » 100% tested and inspected prior to shipping
- » Full traceability of all components
- » SST x PTFE seats available for high temperature applications
- » Available in regular or cavity filled styles
- » Standard seats are TFM-1600
- » Cavity fillers are virgin PTFE-meets CFR21
- » Sizes ½"-2" in 316L extended tube design
- » 2½"-6" available in short butt-weld design
- » Cavity Filled Are suitable for up to 50% vacuum applications
- » ½"-2" have 4 bolts, 2½"-4" have 6 bolts, 6" and larger have 8 bolts



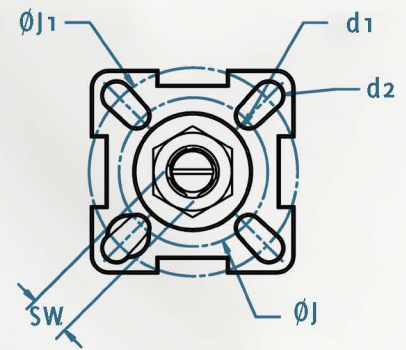
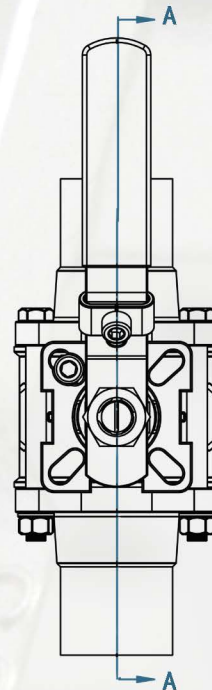
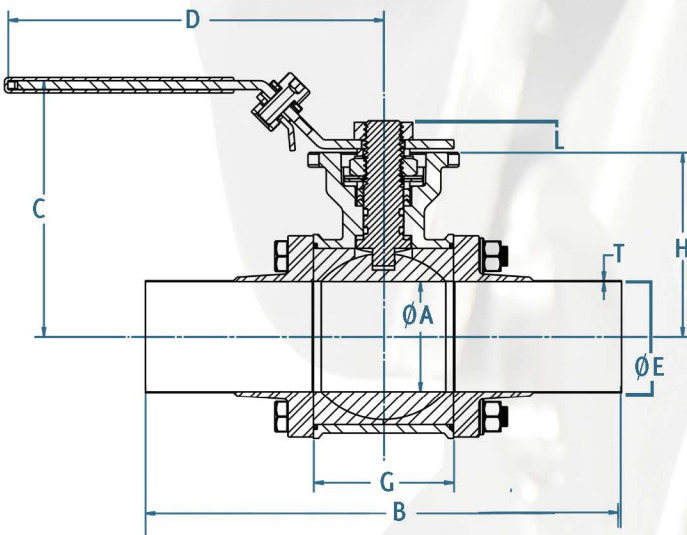
Pyramidal Stem, Double Sealing & Anti-Static Device

6

EA-33NF-EXT



Item	Part (Qty)	Material
1	Body	CF8M/316
2	End Caps (2)	CF8M/316
3	Seats (2)	PTFE
4	Ball	SUS 316
5	Stem	SUS 316
6	Body Seal (2)	PTFE
7	Gasket	PTFE
8	Seal	PTFE
9	Gland Ring (2)	SUS 304
10	Belleville Spring Washer (2)	SUS 301
11	Lever Nut	SUS 304
12	Locking Tab	SUS 304
13	Handle	SUS 304
14	O-ring	VITON®
15	Bolts (4)	SUS 304
16	Bolts Nut (4)	SUS 304
17	Washer (4)	SUS 304
18	Stop Screw	SUS 304
19	Locking Device	SUS 304
20	Static Device (2)	SUS 316
21	O-ring (2)	VITON®



Size	A	B	C	D	E	G	H	L	J	J ₁	d ₁	d ₂	SW	T	ISO5211
½"	0.37	6	2.79	4.33	0.50	0.99	1.67	0.37	1.42	1.65	0.24	0.24	0.35	0.07	F03/F04
¾"	0.63	6	2.89	4.33	0.76	1.09	1.76	0.37	1.42	1.65	0.24	0.24	0.35	0.07	F03/F04
1"	0.87	6.5	3.31	5.32	1.00	1.30	2.13	0.39	1.65	1.97	0.24	0.28	0.43	0.07	F04/F05
1½"	1.37	8	4.31	6.50	1.50	1.94	2.89	0.58	1.97	2.76	0.28	0.35	0.55	0.07	F05/F07
2"	1.87	8.5	4.68	6.50	2.00	2.50	3.26	0.58	1.97	2.76	0.28	0.35	0.55	0.07	F05/F07
2½"	2.37	7.25	5.25	9.06	2.50	3.25	4.21	0.67	2.76	4.02	0.35	0.43	0.67	0.07	F07/F10
3"	2.88	9.125	5.91	11.81	3.00	3.8	4.62	0.67	2.76	4.02	0.35	0.43	0.67	0.07	F07/F10
4"	3.84	9.75	6.90	11.81	4.00	4.6	5.21	0.67	2.76	4.02	0.35	0.43	0.67	0.08	F07/F10
6"	5.78	15.50	8.51	19.68	6.0	7.4	8.5	1.06	4.02	4.92	0.47	0.55	1.06	0.11	F10/F12

Note: Sizes 2½"-6" are short butt-weld.