

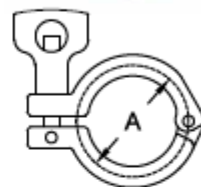
PIPE SIZE CLAMPS

SCHEDULE 5S, 10S & 40S SINGLE PIN CLAMPS 13MHV

PIPE SIZE	A	SERVICE PRESSURE RATING @ 70° F*	304 PART NUMBER
1"	2.12	500	W413MHV-1
1-1/2"	2.65	450	W413MHV-15
2"	3.18	400	W413MHV-2
2-1/2"	3.72	350	W413MHV-25
3"	4.26	250	W413MHV-3
4"	5.26	150	W413MHV-4
6"	7.50	100	W413MHV-6
8"	9.40	75	W413MHV-8

* Wing nut tightened to 25 in. lbs. torque

1" through 2-1/2" pipe size clamps use tube size 13MHM clamps half size larger

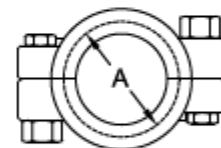


SCHEDULE 5S, 10S & 40S HEAVY DUTY BOLTED CLAMPS 13MHPV

PIPE SIZE	A	SERVICE PRESSURE RATING @ 70° F*	304 PART NUMBER
1"	2.05	750	W413MHPV-1
1-1/2"	2.58	500	W413MHPV-15
2"	3.11	500	W413MHPV-2
2-1/2"	3.46	500	W413MHPV-25

* All nuts tightened to 20 in. lbs. torque

1" through 2-1/2" pipe size clamps use tube size 13MHP clamps half size larger



PIPE SIZE CAPS

SCHEDULE 5S, 10S & 40S SOLID END CAPS 16AMV



PIPE SIZE	A	B	316L PART NUMBER
1"	0.25	1.98	W616AMV-1
1-1/2"	0.25	2.52	W616AMV-15
2"	0.25	3.05	W616AMV-2
2-1/2"	0.25	3.58	W616AMV-25
3"	0.31	4.12	W616AMV-3
4"	0.31	5.12	W616AMV-4
6"	0.44	7.19	W616AMV-6
8"	0.44	9.20	W616AMV-8

