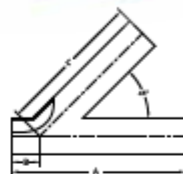


MISCELLANEOUS WELD CONFIGURATIONS

POLISHED WELD LATERALS 28WA



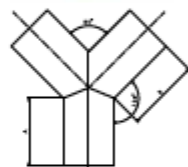
TUBE O.D.	A	B	C	316L PART NUMBER
1"	6.00	1.00	5.00	W628WA-1-7
1-1/2"	7.37	1.19	6.19	W628WA-15-7
2"	8.75	1.62	7.12	W628WA-2-7
2-1/2"	10.00	1.50	8.50	W628WA-25-7
3"	10.75	1.87	8.87	W628WA-3-7
4"	12.81	2.01	10.75	W628WA-4-7
6"	18.00	3.50	14.50	W628WA-6-7



POLISHED WELD TRUE WYES 28WB



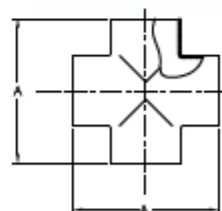
TUBE O.D.	A	B	316L PART NUMBER
1"	2.00	2.44	W628WB-1-7
1-1/2"	2.00	2.44	W628WB-15-7
2"	2.62	3.25	W628WB-2-7
2-1/2"	3.37	4.12	W628WB-25-7
3"	4.00	4.87	W628WB-3-7
4"	5.37	5.60	W628WB-4-7
6"	7.81	8.62	W628WB-6-7



POLISHED WELD CROSSES 9WWWW



TUBE O.D.	A	316L PART NUMBER
1/2"	1.50	W69WWWW-.50-7
3/4"	2.25	W69WWWW-.75-7
1"	2.25	W69WWWW-1-7
1-1/2"	3.31	W69WWWW-15-7
2"	4.12	W69WWWW-2-7
2-1/2"	4.69	W69WWWW-25-7
3"	5.19	W69WWWW-3-7
4"	6.87	W69WWWW-4-7
6"	11.00	W69WWWW-6-7



POLISHED WELD 180° RETURN BENDS 2WU



TUBE O.D.	A	B	316L PART NUMBER
1"	3.00	2.00	W62WU-1-7
1-1/2"	4.50	3.00	W62WU-15-7
2"	6.00	4.00	W62WU-2-7
2-1/2"	7.50	5.00	W62WU-25-7
3"	9.00	6.00	W62WU-3-7
4"	12.00	8.00	W62WU-4-7
6"	18.00	12.00	W62WU-6-7

